

**DSG2 Antibody (C-term)**  
**Affinity Purified Rabbit Polyclonal Antibody (Pab)**  
**Catalog # AP14404b**

**Specification**

---

**DSG2 Antibody (C-term) - Product Information**

Application	IHC-P, WB,E
Primary Accession	<a href="#">Q14126</a>
Other Accession	<a href="#">NP_001934.2</a>
Reactivity	Human
Host	Rabbit
Clonality	Polyclonal
Isotype	Rabbit IgG
Calculated MW	122294
Antigen Region	829-857

**DSG2 Antibody (C-term) - Additional Information**

**Gene ID** 1829

**Other Names**

Desmoglein-2, Cadherin family member 5, HDGC, DSG2, CDHF5

**Target/Specificity**

This DSG2 antibody is generated from rabbits immunized with a KLH conjugated synthetic peptide between 829-857 amino acids from the C-terminal region of human DSG2.

**Dilution**

IHC-P~~1:10~50

WB~~1:1000

E~~Use at an assay dependent concentration.

**Format**

Purified polyclonal antibody supplied in PBS with 0.09% (W/V) sodium azide. This antibody is purified through a protein A column, followed by peptide affinity purification.

**Storage**

Maintain refrigerated at 2-8°C for up to 2 weeks. For long term storage store at -20°C in small aliquots to prevent freeze-thaw cycles.

**Precautions**

DSG2 Antibody (C-term) is for research use only and not for use in diagnostic or therapeutic procedures.

**DSG2 Antibody (C-term) - Protein Information**

**Name** DSG2

## Synonyms CDHF5

**Function** A component of desmosome cell-cell junctions which are required for positive regulation of cellular adhesion (PubMed:[38395410](#)). Involved in the interaction of plaque proteins and intermediate filaments mediating cell-cell adhesion. Required for proliferation and viability of embryonic stem cells in the blastocyst, thereby crucial for progression of post-implantation embryonic development (By similarity). Maintains pluripotency by regulating epithelial to mesenchymal transition/mesenchymal to epithelial transition (EMT/MET) via interacting with and sequestering CTNNB1 to sites of cell-cell contact, thereby reducing translocation of CTNNB1 to the nucleus and subsequent transcription of CTNNB1/TCF-target genes (PubMed:[29910125](#)). Promotes pluripotency and the multi-lineage differentiation potential of hematopoietic stem cells (PubMed:[27338829](#)). Plays a role in endothelial cell sprouting and elongation via mediating the junctional-association of cortical actin fibers and CDH5 (PubMed:[27338829](#)). Plays a role in limiting inflammatory infiltration and the apoptotic response to injury in kidney tubular epithelial cells, potentially via its role in maintaining cell-cell adhesion and the epithelial barrier (PubMed:[38395410](#)).

## Cellular Location

Cell membrane; Single-pass type I membrane protein. Cell junction, desmosome. Cytoplasm

## Tissue Location

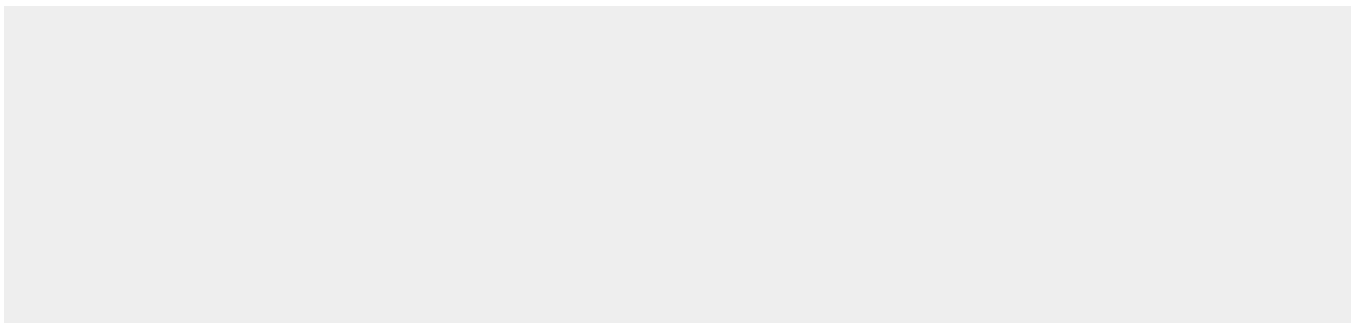
Expressed in undifferentiated pluripotent stem cells, expression decreases during differentiation (at protein level) (PubMed:[29910125](#)). Expressed in hematopoietic stem cells and circulating endothelial progenitor cells, expression decreases upon increasing cell lineage commitment (at protein level) (PubMed:[27338829](#)). Expressed on common myeloid progenitors, pro- myelocytes, pro-erythrocytes and B-cell lineage progenitors (at protein level). Expression in mature cell types in the bone marrow and mature leukocyte populations is absent (PubMed:[27338829](#)). Expressed by foreskin fibroblasts, expression peaks during the early stage of differentiation reprogramming (at protein level) (PubMed:[29910125](#)) Expressed by endothelial cells in both arterioles and venules in the cervix (at protein level) (PubMed:[27338829](#)). Expressed in kidney tubular epithelial cells (PubMed:[38395410](#))

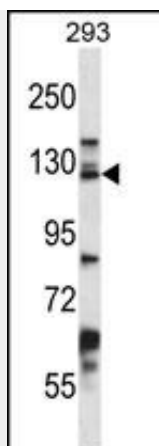
## DSG2 Antibody (C-term) - Protocols

Provided below are standard protocols that you may find useful for product applications.

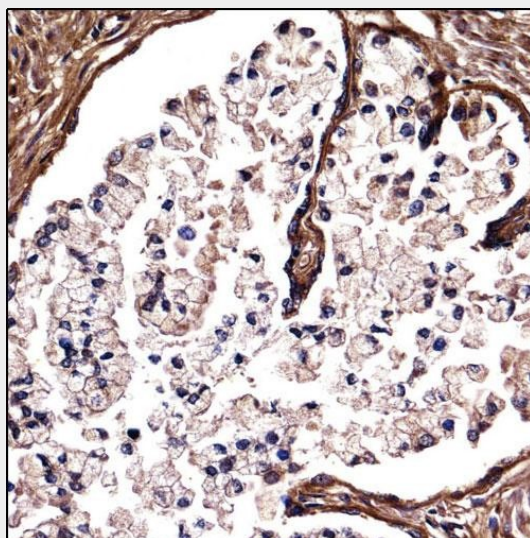
- [Western Blot](#)
- [Blocking Peptides](#)
- [Dot Blot](#)
- [Immunohistochemistry](#)
- [Immunofluorescence](#)
- [Immunoprecipitation](#)
- [Flow Cytometry](#)
- [Cell Culture](#)

## DSG2 Antibody (C-term) - Images





DSG2 Antibody (C-term) (Cat. #AP14404b) western blot analysis in 293 cell line lysates (35ug/lane). This demonstrates the DSG2 antibody detected the DSG2 protein (arrow).



DSG2 Antibody (C-term) (AP14404b) immunohistochemistry analysis in formalin fixed and paraffin embedded human prostate tissue followed by peroxidase conjugation of the secondary antibody and DAB staining. This data demonstrates the use of DSG2 Antibody (C-term) for immunohistochemistry. Clinical relevance has not been evaluated.

### **DSG2 Antibody (C-term) - Background**

Desmosomes are cell-cell junctions between epithelial, myocardial, and certain other cell types. This gene product is a calcium-binding transmembrane glycoprotein component of desmosomes in vertebrate epithelial cells. Currently, three desmoglein subfamily members have been identified and all are members of the cadherin cell adhesion molecule superfamily. These desmoglein gene family members are located in a cluster on chromosome 18. This second family member is expressed in colon, colon carcinoma, and other simple and stratified epithelial-derived cell lines. Mutations in this gene have been associated with arrhythmogenic right ventricular dysplasia, familial, 10.

### **DSG2 Antibody (C-term) - References**

Bailey, S.D., et al. Diabetes Care 33(10):2250-2253(2010)

Fressart, V., et al. Europace 12(6):861-868(2010)

Schlegel, N., et al. Am. J. Physiol. Gastrointest. Liver Physiol. 298 (5), G774-G783 (2010) :

Cox, M.G., et al. Circ Arrhythm Electrophysiol 3(2):126-133(2010)

Buxens, A., et al. Scand J Med Sci Sports (2010) In press :