

**SWAP70 Antibody (Center)**  
**Purified Rabbit Polyclonal Antibody (Pab)**  
**Catalog # AP1441c****Specification**

---

**SWAP70 Antibody (Center) - Product Information**

Application	WB,E
Primary Accession	<a href="#">Q9UH65</a>
Other Accession	<a href="#">Q6A028</a> , <a href="#">P0C1G6</a>
Reactivity	Human
Predicted	Bovine, Mouse
Host	Rabbit
Clonality	Polyclonal
Isotype	Rabbit IgG
Calculated MW	68998
Antigen Region	227-256

**SWAP70 Antibody (Center) - Additional Information****Gene ID** 23075**Other Names**

Switch-associated protein 70, SWAP-70, SWAP70, KIAA0640

**Target/Specificity**

This SWAP70 antibody is generated from rabbits immunized with a KLH conjugated synthetic peptide between 227-256 amino acids from the Central region of human SWAP70.

**Dilution**

WB~~1:1000

E~~Use at an assay dependent concentration.

**Format**

Purified polyclonal antibody supplied in PBS with 0.09% (W/V) sodium azide. This antibody is prepared by Saturated Ammonium Sulfate (SAS) precipitation followed by dialysis against PBS.

**Storage**

Maintain refrigerated at 2-8°C for up to 2 weeks. For long term storage store at -20°C in small aliquots to prevent freeze-thaw cycles.

**Precautions**

SWAP70 Antibody (Center) is for research use only and not for use in diagnostic or therapeutic procedures.

**SWAP70 Antibody (Center) - Protein Information****Name** SWAP70

**Synonyms** KIAA0640

**Function** Phosphatidylinositol 3,4,5-trisphosphate-dependent guanine nucleotide exchange factor (GEF) which, independently of RAS, transduces signals from tyrosine kinase receptors to RAC. It also mediates signaling of membrane ruffling. Regulates the actin cytoskeleton as an effector or adapter protein in response to agonist stimulated phosphatidylinositol (3,4)-bisphosphate production and cell protrusion (By similarity).

**Cellular Location**

Cytoplasm. Cell membrane. Nucleus. Cell projection, lamellipodium. Cytoplasm, cytoskeleton. Note=In resting B-cells it is localized mainly in the cytoplasm and upon cell activation it is recruited to the plasma membrane and then translocates to the nucleus (PubMed:10681448) In activated, class-switching B-cells it is associated with membrane IgG but not IgM (PubMed:10681448). Localized to loose actin filament arrays located behind actively extending lamellipodia (PubMed:12925760).

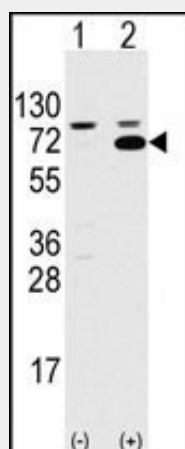
**Tissue Location**

Expressed only in mature B-cells including those associated with mucosa-associated tissue and bronchus-associated tissue (PubMed:10681448). Widely expressed. Abundant in spleen, and fairly abundant in kidney, lung and liver. Also found in monocytes and macrophages (PubMed:12925760).

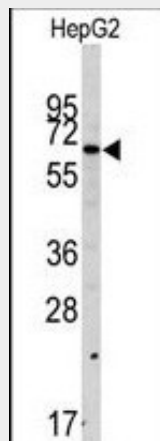
**SWAP70 Antibody (Center) - Protocols**

Provided below are standard protocols that you may find useful for product applications.

- [Western Blot](#)
- [Blocking Peptides](#)
- [Dot Blot](#)
- [Immunohistochemistry](#)
- [Immunofluorescence](#)
- [Immunoprecipitation](#)
- [Flow Cytometry](#)
- [Cell Culture](#)

**SWAP70 Antibody (Center) - Images**

Western blot analysis of SWAP70 (arrow) using rabbit polyclonal SWAP70 Antibody (Center) (Cat# AP1441c). 293 cell lysates (2 ug/lane) either nontransfected (Lane 1) or transiently transfected with the SWAP70 gene (Lane 2) (Origene Technologies).



Western blot analysis of anti-SWAP70 Antibody (Center) (Cat# AP1441c) in HepG2 cell line lysates (35ug/lane). SWAP70 (arrow) was detected using the purified polyclonal antibody.

#### **SWAP70 Antibody (Center) - Background**

SWAP70 is a phosphatidylinositol 3,4,5-trisphosphate-dependent guanine nucleotide exchange factor (GEF) which, independently of RAS, transduces signals from tyrosine kinase receptors to RAC. It also mediates signaling of membrane ruffling. This protein regulates the actin cytoskeleton as an effector or adapter protein in response to agonist stimulated phosphatidylinositol (3,4)-bisphosphate production and cell protrusion.

#### **SWAP70 Antibody (Center) - References**

Hilpel, et al., Mol. Biol. Cell 14(8):3242-3253 (2003).  
Rapalus, L., et al., Clin. Immunol. 101(3):270-275 (2001).  
Masat, L., et al., Proc. Natl. Acad. Sci. U.S.A. 97(5):2180-2184 (2000).