

DSG1 Antibody (Center)
Affinity Purified Rabbit Polyclonal Antibody (Pab)
Catalog # AP14430c**Specification**

DSG1 Antibody (Center) - Product Information

Application	WB, IHC-P,E
Primary Accession	Q02413
Other Accession	NP_001933.2
Reactivity	Human
Host	Rabbit
Clonality	Polyclonal
Isotype	Rabbit IgG
Calculated MW	113748
Antigen Region	471-499

DSG1 Antibody (Center) - Additional Information**Gene ID** 1828**Other Names**

Desmoglein-1, Cadherin family member 4, Desmosomal glycoprotein 1, DG1, DGI, Pemphigus foliaceus antigen, DSG1, CDHF4

Target/Specificity

This DSG1 antibody is generated from rabbits immunized with a KLH conjugated synthetic peptide between 471-499 amino acids from the Central region of human DSG1.

Dilution

WB~~1:1000

IHC-P~~1:10~50

Format

Purified polyclonal antibody supplied in PBS with 0.09% (W/V) sodium azide. This antibody is purified through a protein A column, followed by peptide affinity purification.

Storage

Maintain refrigerated at 2-8°C for up to 2 weeks. For long term storage store at -20°C in small aliquots to prevent freeze-thaw cycles.

Precautions

DSG1 Antibody (Center) is for research use only and not for use in diagnostic or therapeutic procedures.

DSG1 Antibody (Center) - Protein Information**Name** DSG1

Synonyms CDHF4

Function Component of intercellular desmosome junctions. Involved in the interaction of plaque proteins and intermediate filaments mediating cell-cell adhesion.

Cellular Location

Cell membrane {ECO:0000250|UniProtKB:Q7TSF1}; Single-pass type I membrane protein {ECO:0000250|UniProtKB:Q7TSF1} Cell junction, desmosome. Cytoplasm. Nucleus

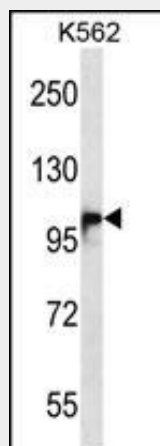
Tissue Location

Epidermis, tongue, tonsil and esophagus.

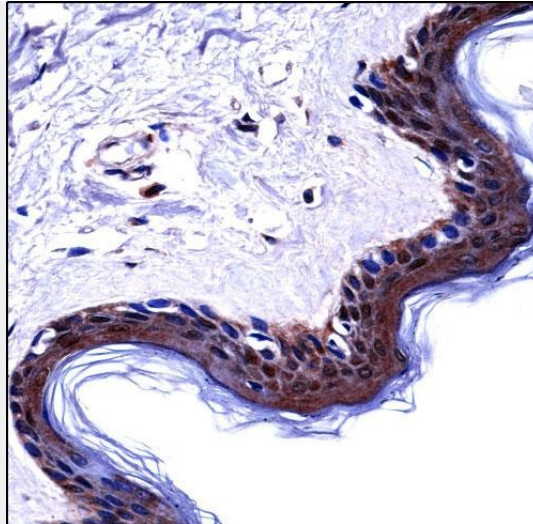
DSG1 Antibody (Center) - Protocols

Provided below are standard protocols that you may find useful for product applications.

- [Western Blot](#)
- [Blocking Peptides](#)
- [Dot Blot](#)
- [Immunohistochemistry](#)
- [Immunofluorescence](#)
- [Immunoprecipitation](#)
- [Flow Cytometry](#)
- [Cell Culture](#)

DSG1 Antibody (Center) - Images

DSG1 Antibody (Center) (Cat. #AP14430c) western blot analysis in K562 cell line lysates (35ug/lane). This demonstrates the DSG1 antibody detected the DSG1 protein (arrow).



DSG1 Antibody (Center) (AP14430c) immunohistochemistry analysis in formalin fixed and paraffin embedded human skin tissue followed by peroxidase conjugation of the secondary antibody and DAB staining. This data demonstrates the use of DSG1 Antibody (Center) for immunohistochemistry. Clinical relevance has not been evaluated.

DSG1 Antibody (Center) - Background

Desmosomes are cell-cell junctions between epithelial, myocardial and certain other cell types. Desmoglein 1 is a calcium-binding transmembrane glycoprotein component of desmosomes in vertebrate epithelial cells. Currently, three desmoglein subfamily members have been identified and all are members of the cadherin cell adhesion molecule superfamily. These desmoglein gene family members are located in a cluster on chromosome 18. The protein encoded by this gene has been identified as the autoantigen of the autoimmune skin blistering disease pemphigus foliaceus.

DSG1 Antibody (Center) - References

Rothenberg, M.E., et al. Nat. Genet. 42(4):289-291(2010)
Naoe, Y., et al. J. Dermatol. Sci. 57(3):192-198(2010)
Qian, Y., et al. J. Invest. Dermatol. 129(12):2823-2834(2009)
Spindler, V., et al. J. Biol. Chem. 284(44):30556-30564(2009)
Getsios, S., et al. J. Cell Biol. 185(7):1243-1258(2009)

DSG1 Antibody (Center) - Citations

- [The interaction between Staphylococcus aureus SdrD and desmoglein 1 is important for adhesion to host cells.](#)