

Mouse Styk1 Antibody (Center)
Affinity Purified Rabbit Polyclonal Antibody (Pab)
Catalog # AP14469c

Specification

Mouse Styk1 Antibody (Center) - Product Information

Application	WB,E
Primary Accession	O6J9G1
Other Accession	NP_766479.1
Reactivity	Human
Host	Rabbit
Clonality	Polyclonal
Isotype	Rabbit IgG
Calculated MW	48121
Antigen Region	210-238

Mouse Styk1 Antibody (Center) - Additional Information

Gene ID 243659

Other Names

Tyrosine-protein kinase STYK1, Novel oncogene with kinase domain, mNOK,
Serine/threonine/tyrosine kinase 1, Styk1, Nok

Target/Specificity

This Mouse Styk1 antibody is generated from rabbits immunized with a KLH conjugated synthetic peptide between 210-238 amino acids from the Central region of mouse Styk1.

Dilution

WB~~1:1000

E~~Use at an assay dependent concentration.

Format

Purified polyclonal antibody supplied in PBS with 0.09% (W/V) sodium azide. This antibody is purified through a protein A column, followed by peptide affinity purification.

Storage

Maintain refrigerated at 2-8°C for up to 2 weeks. For long term storage store at -20°C in small aliquots to prevent freeze-thaw cycles.

Precautions

Mouse Styk1 Antibody (Center) is for research use only and not for use in diagnostic or therapeutic procedures.

Mouse Styk1 Antibody (Center) - Protein Information

Name Styk1

Synonyms Nok

Function Probable tyrosine protein-kinase, which has strong transforming capabilities on a variety of cell lines including NIH 3T3 fibroblasts and on athymic nude mice. When overexpressed, it can also induce tumor cell invasion as well as metastasis in distant organs. May act by activating both MAP kinase and phosphatidylinositol 3'-kinases (PI3K) pathways.

Cellular Location

Membrane; Single-pass membrane protein

Tissue Location

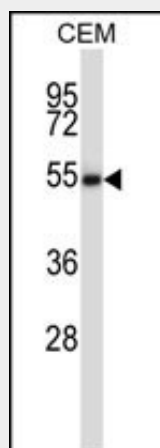
Highly expressed in colon and small intestine. Weakly or not expressed in spleen, skeletal muscle, liver, kidney, heart and brain. Expressed in transformed kidney cell lines (COS-1 and HEK293T).

Mouse Styk1 Antibody (Center) - Protocols

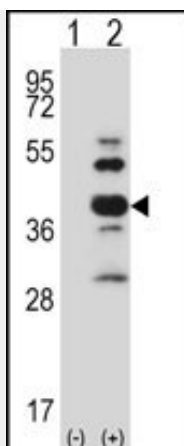
Provided below are standard protocols that you may find useful for product applications.

- [Western Blot](#)
- [Blocking Peptides](#)
- [Dot Blot](#)
- [Immunohistochemistry](#)
- [Immunofluorescence](#)
- [Immunoprecipitation](#)
- [Flow Cytometry](#)
- [Cell Culture](#)

Mouse Styk1 Antibody (Center) - Images



Mouse Styk1 Antibody (Center) (Cat. #AP14469c) western blot analysis in CEM cell line lysates (35ug/lane). This demonstrates the Styk1 antibody detected the Styk1 protein (arrow).



Western blot analysis of Styk1 (arrow) using rabbit polyclonal Mouse Styk1 Antibody (Center) (Cat. #AP14469c). 293 cell lysates (2 ug/lane) either nontransfected (Lane 1) or transiently transfected (Lane 2) with the Styk1 gene.

Mouse Styk1 Antibody (Center) - Background

Probable tyrosine protein-kinase, which has strong transforming capabilities on a variety of cell lines including NIH 3T3 fibroblasts and on athymic nude mice. When overexpressed, it can also induce tumor cell invasion as well as metastasis in distant organs. May act by activating both MAP kinase and phosphatidylinositol 3'-kinases (PI3K) pathways.

Mouse Styk1 Antibody (Center) - References

Chen, Y., et al. Cancer Res. 65(23):10838-10846(2005)
Liu, L., et al. Cancer Res. 64(10):3491-3499(2004)