

**Mouse Tie1 Antibody (Center)**  
**Affinity Purified Rabbit Polyclonal Antibody (Pab)**  
**Catalog # AP14471c**

**Specification**

---

**Mouse Tie1 Antibody (Center) - Product Information**

Application	WB,E
Primary Accession	<a href="#">Q06806</a>
Reactivity	Human, Mouse
Host	Rabbit
Clonality	Polyclonal
Isotype	Rabbit IgG
Calculated MW	124583
Antigen Region	361-389

**Mouse Tie1 Antibody (Center) - Additional Information**

**Gene ID** 21846

**Other Names**

Tyrosine-protein kinase receptor Tie-1, Tie1, Tie, Tie-1

**Target/Specificity**

This Mouse Tie1 antibody is generated from rabbits immunized with a KLH conjugated synthetic peptide between 361-389 amino acids from the Central region of mouse Tie1.

**Dilution**

WB~~1:1000

E~~Use at an assay dependent concentration.

**Format**

Purified polyclonal antibody supplied in PBS with 0.09% (W/V) sodium azide. This antibody is purified through a protein A column, followed by peptide affinity purification.

**Storage**

Maintain refrigerated at 2-8°C for up to 2 weeks. For long term storage store at -20°C in small aliquots to prevent freeze-thaw cycles.

**Precautions**

Mouse Tie1 Antibody (Center) is for research use only and not for use in diagnostic or therapeutic procedures.

**Mouse Tie1 Antibody (Center) - Protein Information**

**Name** Tie1

**Synonyms** Tie, Tie-1

**Function** Transmembrane tyrosine-protein kinase that may modulate TEK/TIE2 activity and contribute to the regulation of angiogenesis.

**Cellular Location**

Cell membrane; Single-pass type I membrane protein

**Tissue Location**

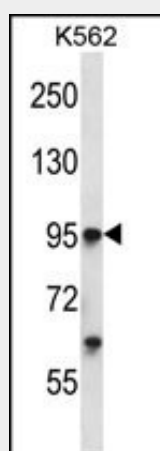
Specifically expressed in developing vascular endothelial cells. Abundantly expressed in lung and heart, moderately in brain, liver and kidney, and weakly in thymus, spleen and testis

**Mouse Tie1 Antibody (Center) - Protocols**

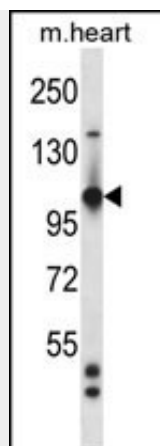
Provided below are standard protocols that you may find useful for product applications.

- [Western Blot](#)
- [Blocking Peptides](#)
- [Dot Blot](#)
- [Immunohistochemistry](#)
- [Immunofluorescence](#)
- [Immunoprecipitation](#)
- [Flow Cytometry](#)
- [Cell Culture](#)

**Mouse Tie1 Antibody (Center) - Images**



Mouse Tie1 Antibody (Center) (Cat. #AP14471c) western blot analysis in K562 cell line lysates (35ug/lane). This demonstrates the Tie1 antibody detected the Tie1 protein (arrow).



Mouse Tie1 Antibody (Center) (Cat. #AP14471c) western blot analysis in mouse heart tissue lysates (35ug/lane). This demonstrates the Tie1 antibody detected the Tie1 protein (arrow).

#### **Mouse Tie1 Antibody (Center) - Background**

Probable protein tyrosine-kinase transmembrane receptor.