

MFSD2B Antibody (C-term)
Affinity Purified Rabbit Polyclonal Antibody (Pab)
Catalog # AP14483b**Specification**

MFSD2B Antibody (C-term) - Product Information

Application	WB,E
Primary Accession	A6NFX1
Other Accession	B5MC32 , NP_001073942.1
Reactivity	Human
Host	Rabbit
Clonality	Polyclonal
Isotype	Rabbit IgG
Calculated MW	53743
Antigen Region	383-411

MFSD2B Antibody (C-term) - Additional Information**Gene ID** 388931**Other Names**

Major facilitator superfamily domain-containing protein 2B, MFSD2B

Target/Specificity

This MFSD2B antibody is generated from rabbits immunized with a KLH conjugated synthetic peptide between 383-411 amino acids from the C-terminal region of human MFSD2B.

Dilution

WB~~1:1000

E~~Use at an assay dependent concentration.

Format

Purified polyclonal antibody supplied in PBS with 0.09% (W/V) sodium azide. This antibody is purified through a protein A column, followed by peptide affinity purification.

Storage

Maintain refrigerated at 2-8°C for up to 2 weeks. For long term storage store at -20°C in small aliquots to prevent freeze-thaw cycles.

Precautions

MFSD2B Antibody (C-term) is for research use only and not for use in diagnostic or therapeutic procedures.

MFSD2B Antibody (C-term) - Protein Information**Name** MFSD2B {ECO:0000303|PubMed:29045386, ECO:0000312|HGNC:HGNC:37207}**Function** Lipid transporter that specifically mediates export of sphingosine-1-phosphate in red

blood cells and platelets (PubMed:[29045386](#)). Sphingosine-1-phosphate is a signaling sphingolipid and its export from red blood cells into in the plasma is required for red blood cell morphology (By similarity). Sphingosine-1-phosphate export from platelets is required for platelet aggregation and thrombus formation (By similarity). Mediates the export of different sphingosine-1-phosphate (S1P) species, including S1P(d18:0) (sphinganine 1-phosphate), S1P (d18:1) (sphing-4-enine 1-phosphate) and S1P (d18:2) (sphinga-4E,14Z-dienine-1-phosphate) (Probable). Release of sphingosine-1-phosphate is facilitated by a proton gradient (By similarity). In contrast, cations, such as sodium, are not required to drive sphingosine-1-phosphate transport (Probable). In addition to export, also able to mediate S1P import (By similarity). Does not transport lysophosphatidylcholine (LPC) (Probable).

Cellular Location

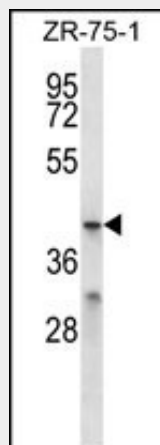
Cell membrane; Multi-pass membrane protein. Note=Localizes to the cell membrane and intracellular membranes.

MFSD2B Antibody (C-term) - Protocols

Provided below are standard protocols that you may find useful for product applications.

- [Western Blot](#)
- [Blocking Peptides](#)
- [Dot Blot](#)
- [Immunohistochemistry](#)
- [Immunofluorescence](#)
- [Immunoprecipitation](#)
- [Flow Cytometry](#)
- [Cell Culture](#)

MFSD2B Antibody (C-term) - Images



MFSD2B Antibody (C-term) (Cat. #AP14483b) western blot analysis in ZR-75-1 cell line lysates (35ug/lane). This demonstrates the MFSD2B antibody detected the MFSD2B protein (arrow).

MFSD2B Antibody (C-term) - References

Lowe, J.K., et al. PLoS Genet. 5 (2), E1000365 (2009) :
Angers, M., et al. Biochem. J. 416(3):347-355(2008)