

**CELA3A Antibody (Center)**  
**Affinity Purified Rabbit Polyclonal Antibody (Pab)**  
**Catalog # AP14493C****Specification**

---

**CELA3A Antibody (Center) - Product Information**

|                   |                             |
|-------------------|-----------------------------|
| Application       | IHC-P, WB,E                 |
| Primary Accession | <a href="#">P09093</a>      |
| Other Accession   | <a href="#">NP_005738.4</a> |
| Reactivity        | Human                       |
| Host              | Rabbit                      |
| Clonality         | Polyclonal                  |
| Isotype           | Rabbit IgG                  |
| Calculated MW     | 29489                       |
| Antigen Region    | 157-186                     |

**CELA3A Antibody (Center) - Additional Information****Gene ID** 10136**Other Names**

Chymotrypsin-like elastase family member 3A, Elastase IIIA, Elastase-3A, Protease E, CELA3A, ELA3, ELA3A

**Target/Specificity**

This CELA3A antibody is generated from rabbits immunized with a KLH conjugated synthetic peptide between 157-186 amino acids from the Central region of human CELA3A.

**Dilution**

IHC-P~~1:10~50

WB~~1:1000

E~~Use at an assay dependent concentration.

**Format**

Purified polyclonal antibody supplied in PBS with 0.09% (W/V) sodium azide. This antibody is purified through a protein A column, followed by peptide affinity purification.

**Storage**

Maintain refrigerated at 2-8°C for up to 2 weeks. For long term storage store at -20°C in small aliquots to prevent freeze-thaw cycles.

**Precautions**

CELA3A Antibody (Center) is for research use only and not for use in diagnostic or therapeutic procedures.

**CELA3A Antibody (Center) - Protein Information****Name** CELA3A

**Synonyms** ELA3, ELA3A

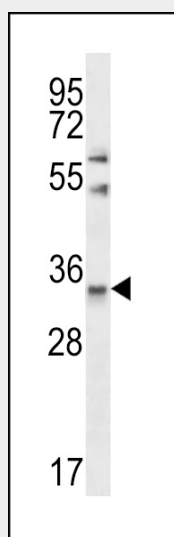
**Function** Efficient protease with alanine specificity but only little elastolytic activity.

### **CELA3A Antibody (Center) - Protocols**

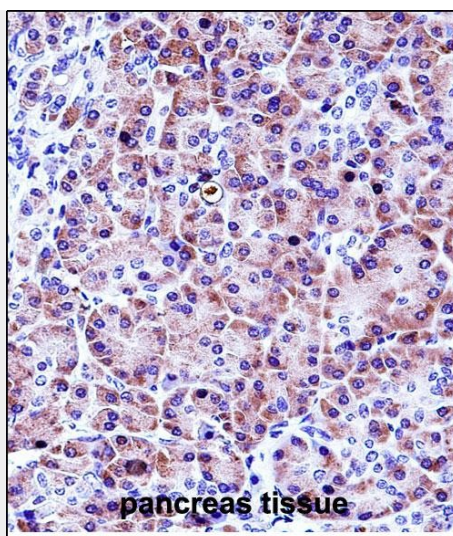
Provided below are standard protocols that you may find useful for product applications.

- [Western Blot](#)
- [Blocking Peptides](#)
- [Dot Blot](#)
- [Immunohistochemistry](#)
- [Immunofluorescence](#)
- [Immunoprecipitation](#)
- [Flow Cytometry](#)
- [Cell Culture](#)

### **CELA3A Antibody (Center) - Images**



CELA3A Antibody (Center) (Cat. #AP14493c) western blot analysis in Jurkat cell line lysates (35ug/lane). This demonstrates the CELA3A antibody detected the CELA3A protein (arrow).



CELA3A Antibody (Center) (Cat. #AP14493c) immunohistochemistry analysis in formalin fixed and paraffin embedded human pancreas tissue followed by peroxidase conjugation of the secondary antibody and DAB staining. This data demonstrates the use of CELA3A Antibody (Center) for immunohistochemistry. Clinical relevance has not been evaluated.

#### **CELA3A Antibody (Center) - Background**

Elastases form a subfamily of serine proteases that hydrolyze many proteins in addition to elastin. Humans have six elastase genes which encode the structurally similar proteins elastase 1, 2, 2A, 2B, 3A, and 3B. Unlike other elastases, elastase 3A has little elastolytic activity. Like most of the human elastases, elastase 3A is secreted from the pancreas as a zymogen and, like other serine proteases such as trypsin, chymotrypsin and kallikrein, it has a digestive function in the intestine. Elastase 3A preferentially cleaves proteins after alanine residues. Elastase 3A may also function in the intestinal transport and metabolism of cholesterol. Both elastase 3A and elastase 3B have been referred to as protease E and as elastase 1.

#### **CELA3A Antibody (Center) - References**

Shimada, S., et al. Int. J. Mol. Med. 10(5):599-603(2002)  
Shirasu, Y., et al. J. Biochem. 104(2):259-264(1988)  
Tani, T., et al. J. Biol. Chem. 263(3):1231-1239(1988)