

ETV6 Antibody (Center)
Affinity Purified Rabbit Polyclonal Antibody (Pab)
Catalog # AP14496c**Specification**

ETV6 Antibody (Center) - Product Information

Application	WB,E
Primary Accession	P41212
Other Accession	Q0VC65 , NP_001978.1
Reactivity	Mouse
Predicted	Bovine
Host	Rabbit
Clonality	Polyclonal
Isotype	Rabbit IgG
Calculated MW	53000
Antigen Region	173-202

ETV6 Antibody (Center) - Additional Information**Gene ID** 2120**Other Names**

Transcription factor ETV6, ETS translocation variant 6, ETS-related protein Tel1, Tel, ETV6, TEL, TEL1

Target/Specificity

This ETV6 antibody is generated from rabbits immunized with a KLH conjugated synthetic peptide between 173-202 amino acids from the Central region of human ETV6.

Dilution

WB~~1:1000

E~~Use at an assay dependent concentration.

Format

Purified polyclonal antibody supplied in PBS with 0.09% (W/V) sodium azide. This antibody is purified through a protein A column, followed by peptide affinity purification.

Storage

Maintain refrigerated at 2-8°C for up to 2 weeks. For long term storage store at -20°C in small aliquots to prevent freeze-thaw cycles.

Precautions

ETV6 Antibody (Center) is for research use only and not for use in diagnostic or therapeutic procedures.

ETV6 Antibody (Center) - Protein Information**Name** ETV6

Synonyms TEL, TEL1

Function Transcriptional repressor; binds to the DNA sequence 5'- CCGGAAGT-3'. Plays a role in hematopoiesis and malignant transformation.

Cellular Location

Nucleus.

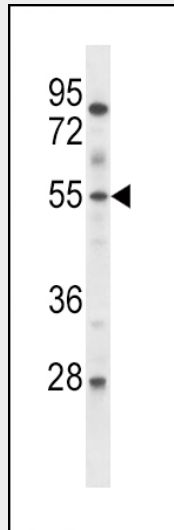
Tissue Location

Ubiquitous.

ETV6 Antibody (Center) - Protocols

Provided below are standard protocols that you may find useful for product applications.

- [Western Blot](#)
- [Blocking Peptides](#)
- [Dot Blot](#)
- [Immunohistochemistry](#)
- [Immunofluorescence](#)
- [Immunoprecipitation](#)
- [Flow Cytometry](#)
- [Cell Culture](#)

ETV6 Antibody (Center) - Images

ETV6 Antibody (Center) (Cat. #AP14496c) western blot analysis in mouse lung tissue lysates (35ug/lane). This demonstrates the ETV6 antibody detected the ETV6 protein (arrow).

ETV6 Antibody (Center) - Background

This gene encodes an ETS family transcription factor. The product of this gene contains two functional domains: a N-terminal pointed (PNT) domain that is involved in protein-protein interactions with itself and other proteins, and a C-terminal DNA-binding domain. Gene knockout studies in mice suggest that it is required for hematopoiesis and maintenance of the developing

vascular network. This gene is known to be involved in a large number of chromosomal rearrangements associated with leukemia and congenital fibrosarcoma.

ETV6 Antibody (Center) - References

Otsubo, K., et al. Cancer Genet. Cytogenet. 202(1):22-26(2010)
Roukens, M.G., et al. Nat. Cell Biol. 12(10):933-942(2010)
Bailey, S.D., et al. Diabetes Care 33(10):2250-2253(2010)
Gascon, E., et al. J. Neurosci. 30(37):12414-12423(2010)
Liang, D.C., et al. Pediatr Blood Cancer 55(3):430-433(2010)