

**RFXAP Antibody (C-term)**  
**Affinity Purified Rabbit Polyclonal Antibody (Pab)**  
**Catalog # AP14506b**

**Specification**

---

**RFXAP Antibody (C-term) - Product Information**

Application	WB,E
Primary Accession	<a href="#">O00287</a>
Other Accession	<a href="#">Q8VCG9</a> , <a href="#">NP_000529.1</a>
Reactivity	Human
Predicted	Mouse
Host	Rabbit
Clonality	Polyclonal
Isotype	Rabbit IgG
Calculated MW	28232
Antigen Region	196-225

**RFXAP Antibody (C-term) - Additional Information**

**Gene ID** 5994

**Other Names**

Regulatory factor X-associated protein, RFX-associated protein, RFX DNA-binding complex 36 kDa subunit, RFXAP

**Target/Specificity**

This RFXAP antibody is generated from rabbits immunized with a KLH conjugated synthetic peptide between 196-225 amino acids from the C-terminal region of human RFXAP.

**Dilution**

WB~~1:1000

**Format**

Purified polyclonal antibody supplied in PBS with 0.09% (W/V) sodium azide. This antibody is purified through a protein A column, followed by peptide affinity purification.

**Storage**

Maintain refrigerated at 2-8°C for up to 2 weeks. For long term storage store at -20°C in small aliquots to prevent freeze-thaw cycles.

**Precautions**

RFXAP Antibody (C-term) is for research use only and not for use in diagnostic or therapeutic procedures.

**RFXAP Antibody (C-term) - Protein Information**

**Name** RFXAP

**Function** Part of the RFX complex that binds to the X-box of MHC II promoters.

**Cellular Location**

Nucleus.

**Tissue Location**

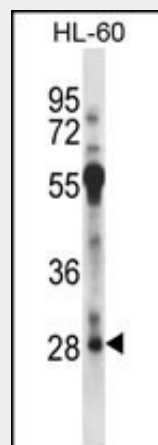
Ubiquitous.

**RFXAP Antibody (C-term) - Protocols**

Provided below are standard protocols that you may find useful for product applications.

- [Western Blot](#)
- [Blocking Peptides](#)
- [Dot Blot](#)
- [Immunohistochemistry](#)
- [Immunofluorescence](#)
- [Immunoprecipitation](#)
- [Flow Cytometry](#)
- [Cell Culture](#)

**RFXAP Antibody (C-term) - Images**



RFXAP Antibody (C-term) (Cat. #AP14506b) western blot analysis in HL-60 cell line lysates (35ug/lane). This demonstrates the RFXAP antibody detected the RFXAP protein (arrow).

**RFXAP Antibody (C-term) - Background**

Major histocompatibility (MHC) class II molecules are transmembrane proteins that have a central role in development and control of the immune system. The protein encoded by this gene, along with regulatory factor X-associated ankyrin-containing protein and regulatory factor-5, forms a complex that binds to the X box motif of certain MHC class II gene promoters and activates their transcription. Once bound to the promoter, this complex associates with the non-DNA-binding factor MHC class II transactivator, which controls the cell type specificity and inducibility of MHC class II gene expression. Mutations in this gene have been linked to bare lymphocyte syndrome type II, complementation group D. Transcript variants utilizing different

polyA signals have been found for this gene.

#### **RFXAP Antibody (C-term) - References**

Laird, K.M., et al. J. Mol. Biol. 403(1):40-51(2010)  
Bushway, M., et al. Immunogenetics 62(2):109-116(2010)  
Briggs, L., et al. Proteins 76(3):655-664(2009)  
Garvie, C.W., et al. Biochim. Biophys. Acta 1779(12):797-804(2008)  
van Eggermond, M.C., et al. Mol. Immunol. 45(10):2920-2928(2008)