

PERP Antibody (C-term)
Affinity Purified Rabbit Polyclonal Antibody (Pab)
Catalog # AP14508b

Specification

PERP Antibody (C-term) - Product Information

Application	WB, IHC-P,E
Primary Accession	Q96FX8
Other Accession	NP_071404.2
Reactivity	Human
Host	Rabbit
Clonality	Polyclonal
Isotype	Rabbit IgG
Calculated MW	21386
Antigen Region	162-191

PERP Antibody (C-term) - Additional Information

Gene ID 64065

Other Names

p53 apoptosis effector related to PMP-22, Keratinocyte-associated protein 1, KCP-1, P53-induced protein PIGPC1, Transmembrane protein THW, PERP, KCP1, KRTCAP1, PIGPC1, THW

Target/Specificity

This PERP antibody is generated from rabbits immunized with a KLH conjugated synthetic peptide between 162-191 amino acids from the C-terminal region of human PERP.

Dilution

WB~~1:1000

IHC-P~~1:10~50

Format

Purified polyclonal antibody supplied in PBS with 0.09% (W/V) sodium azide. This antibody is purified through a protein A column, followed by peptide affinity purification.

Storage

Maintain refrigerated at 2-8°C for up to 2 weeks. For long term storage store at -20°C in small aliquots to prevent freeze-thaw cycles.

Precautions

PERP Antibody (C-term) is for research use only and not for use in diagnostic or therapeutic procedures.

PERP Antibody (C-term) - Protein Information

Name PERP

Function Component of intercellular desmosome junctions. Plays a role in stratified epithelial integrity and cell-cell adhesion by promoting desmosome assembly.

Cellular Location

Cell junction, desmosome {ECO:0000250|UniProtKB:Q9JK95}. Cell membrane; Multi-pass membrane protein. Note=Associated with desmosomes (By similarity). Colocalizes with KRT14 in the cell membrane (PubMed:31898316). {ECO:0000250|UniProtKB:Q9JK95, ECO:0000269|PubMed:31898316}

Tissue Location

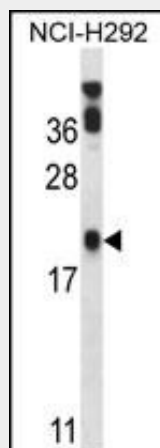
Expressed in skin, heart, placental, liver, pancreas, keratinocytes and dermal fibroblasts

PERP Antibody (C-term) - Protocols

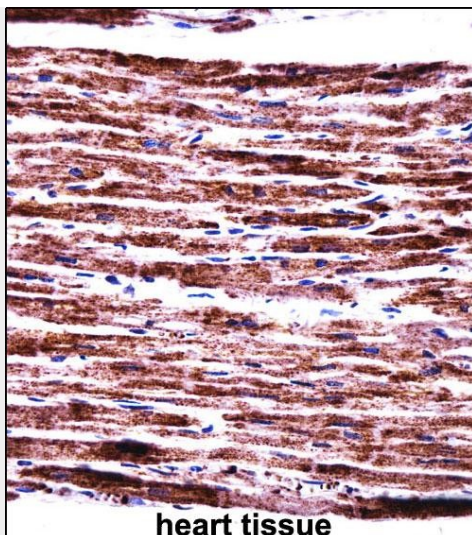
Provided below are standard protocols that you may find useful for product applications.

- [Western Blot](#)
- [Blocking Peptides](#)
- [Dot Blot](#)
- [Immunohistochemistry](#)
- [Immunofluorescence](#)
- [Immunoprecipitation](#)
- [Flow Cytometry](#)
- [Cell Culture](#)

PERP Antibody (C-term) - Images



PERP Antibody (C-term) (Cat. #AP14508b) western blot analysis in NCI-H292 cell line lysates (35ug/lane). This demonstrates the PERP antibody detected the PERP protein (arrow).



heart tissue

PERP Antibody (C-term) (AP14508b) immunohistochemistry analysis in formalin fixed and paraffin embedded human heart tissue followed by peroxidase conjugation of the secondary antibody and DAB staining. This data demonstrates the use of PERP Antibody (C-term) for immunohistochemistry. Clinical relevance has not been evaluated.

PERP Antibody (C-term) - Background

Component of intercellular desmosome junctions. Plays a role in stratified epithelial integrity and cell-cell adhesion by promoting desmosome assembly. Plays a role as an effector in the TP53-dependent apoptotic pathway (By similarity).

PERP Antibody (C-term) - References

Bailey, S.D., et al. Diabetes Care 33(10):2250-2253(2010)
Liu, C.Y., et al. Carcinogenesis 31(7):1259-1263(2010)
Yarden, R.I., et al. Mol. Carcinog. 49(6):545-555(2010)
Talmud, P.J., et al. Am. J. Hum. Genet. 85(5):628-642(2009)
Beaudry, V.G., et al. Am. J. Med. Genet. A 149A (9), 1952-1957 (2009) :