

BCAS2 Antibody (N-term)
Affinity Purified Rabbit Polyclonal Antibody (Pab)
Catalog # AP14509a**Specification**

BCAS2 Antibody (N-term) - Product Information

Application	WB,E
Primary Accession	O75934
Other Accession	O9D287 , Q5RKQ0 , NP_005863.1
Reactivity	Human
Predicted	Zebrafish, Mouse
Host	Rabbit
Clonality	Polyclonal
Isotype	Rabbit IgG
Calculated MW	26131
Antigen Region	21-49

BCAS2 Antibody (N-term) - Additional Information**Gene ID** 10286**Other Names**

Pre-mRNA-splicing factor SPF27, Breast carcinoma-amplified sequence 2, DNA amplified in mammary carcinoma 1 protein, Spliceosome-associated protein SPF 27, BCAS2, DAM1

Target/Specificity

This BCAS2 antibody is generated from rabbits immunized with a KLH conjugated synthetic peptide between 21-49 amino acids from the N-terminal region of human BCAS2.

Dilution

WB~~1:500

E~~Use at an assay dependent concentration.

Format

Purified polyclonal antibody supplied in PBS with 0.09% (W/V) sodium azide. This antibody is purified through a protein A column, followed by peptide affinity purification.

Storage

Maintain refrigerated at 2-8°C for up to 2 weeks. For long term storage store at -20°C in small aliquots to prevent freeze-thaw cycles.

Precautions

BCAS2 Antibody (N-term) is for research use only and not for use in diagnostic or therapeutic procedures.

BCAS2 Antibody (N-term) - Protein Information**Name** BCAS2

Synonyms DAM1 {ECO:0000303|PubMed:10403562}

Function Required for pre-mRNA splicing as component of the activated spliceosome (PubMed:[28076346](#), PubMed:[28502770](#), PubMed:[29301961](#), PubMed:[29360106](#), PubMed:[30705154](#)). Component of the PRP19-CDC5L complex that forms an integral part of the spliceosome and is required for activating pre-mRNA splicing. May have a scaffolding role in the spliceosome assembly as it contacts all other components of the core complex. The PRP19-CDC5L complex may also play a role in the response to DNA damage (DDR).

Cellular Location

Nucleus. Nucleus, nucleolus

Tissue Location

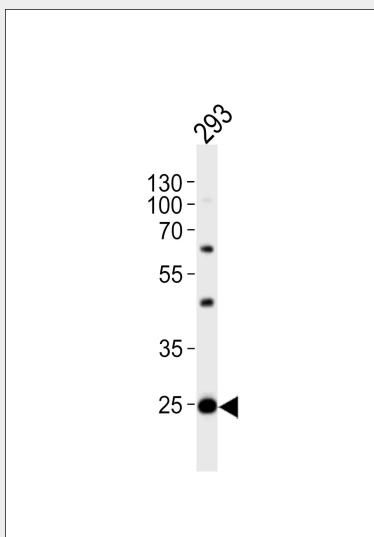
Ubiquitously expressed.

BCAS2 Antibody (N-term) - Protocols

Provided below are standard protocols that you may find useful for product applications.

- [Western Blot](#)
- [Blocking Peptides](#)
- [Dot Blot](#)
- [Immunohistochemistry](#)
- [Immunofluorescence](#)
- [Immunoprecipitation](#)
- [Flow Cytometry](#)
- [Cell Culture](#)

BCAS2 Antibody (N-term) - Images



Western blot analysis of lysate from 293 cell line, using BCAS2 Antibody (N-term)(Cat. #AP14509a). AP14509a was diluted at 1:500. A goat anti-rabbit IgG H&L(HRP) at 1:10000 dilution was used as the secondary antibody. Lysate at 20ug.

BCAS2 Antibody (N-term) - Background

BCAS2 is involved in mRNA splicing (By similarity).

BCAS2 Antibody (N-term) - References

Kuo, P.C., et al. Cancer Res. 69(23):8877-8885(2009)
Ewing, R.M., et al. Mol. Syst. Biol. 3, 89 (2007) :
Qi, C., et al. Biochem. Biophys. Res. Commun. 328(2):393-398(2005)
Lee, S., et al. Cancer Lett. 188 (1-2), 121-126 (2002) :
Maass, N., et al. Cancer Lett. 185(2):219-223(2002)