

**GPR27 Antibody (Center)**  
**Affinity Purified Rabbit Polyclonal Antibody (Pab)**  
**Catalog # AP14514c**

**Specification**

---

**GPR27 Antibody (Center) - Product Information**

Application	WB,E
Primary Accession	<a href="#">O9NS67</a>
Other Accession	<a href="#">O9JJH3</a> , <a href="#">O54897</a> , <a href="#">NP_061844.1</a>
Reactivity	Human
Predicted	Mouse, Rat
Host	Rabbit
Clonality	Polyclonal
Isotype	Rabbit IgG
Antigen Region	193-221

**GPR27 Antibody (Center) - Additional Information**

**Gene ID** 2850

**Other Names**

Probable G-protein coupled receptor 27, Super conserved receptor expressed in brain 1, GPR27, SREB1

**Target/Specificity**

This GPR27 antibody is generated from rabbits immunized with a KLH conjugated synthetic peptide between 193-221 amino acids from the Central region of human GPR27.

**Dilution**

WB~~1:1000  
E~~Use at an assay dependent concentration.

**Format**

Purified polyclonal antibody supplied in PBS with 0.09% (W/V) sodium azide. This antibody is purified through a protein A column, followed by peptide affinity purification.

**Storage**

Maintain refrigerated at 2-8°C for up to 2 weeks. For long term storage store at -20°C in small aliquots to prevent freeze-thaw cycles.

**Precautions**

GPR27 Antibody (Center) is for research use only and not for use in diagnostic or therapeutic procedures.

**GPR27 Antibody (Center) - Protein Information**

**Name** GPR27

### Synonyms SREB1

**Function** Orphan receptor. Possible candidate for amine-like G-protein coupled receptor.

### Cellular Location

Cell membrane; Multi-pass membrane protein

### Tissue Location

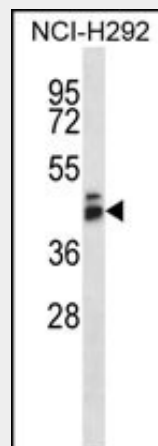
Highly expressed as a 3.0 kb transcript in brain, ovary, testis, heart, prostate and peripheral Leukocytes. Lower levels in pancreas and small intestine. A 2.3 kb transcript was also found in peripheral Leukocytes. In brain regions, detected as a 3.0 kb transcript in all regions tested. Highest levels in the caudate nucleus, putamen, hippocampus and subthalamic nucleus. Lowest level in the cerebellum

### GPR27 Antibody (Center) - Protocols

Provided below are standard protocols that you may find useful for product applications.

- [Western Blot](#)
- [Blocking Peptides](#)
- [Dot Blot](#)
- [Immunohistochemistry](#)
- [Immunofluorescence](#)
- [Immunoprecipitation](#)
- [Flow Cytometry](#)
- [Cell Culture](#)

### GPR27 Antibody (Center) - Images



GPR27 Antibody (Center) (Cat. #AP14514c) western blot analysis in NCI-H292 cell line lysates (35ug/lane). This demonstrates the GPR27 antibody detected the GPR27 protein (arrow).

### GPR27 Antibody (Center) - Background

GPR27 is a member of the G protein-coupled receptors (GPCRs), a large family of receptors that have a similar structure characterized by 7 transmembrane domains. Activation of GPCRs by extracellular stimuli such as neurotransmitters, hormones, or light induces an intracellular signaling cascade mediated by heterotrimeric GTP-binding proteins, or G proteins. [supplied by

OMIM].

**GPR27 Antibody (Center) - References**

Matsumoto, M., et al. Biochem. Biophys. Res. Commun. 272(2):576-582(2000)