

STS Antibody (C-term)
Affinity Purified Rabbit Polyclonal Antibody (Pab)
Catalog # AP14527b**Specification**

STS Antibody (C-term) - Product Information

Application	WB, IHC-P,E
Primary Accession	P08842
Other Accession	NP_000342.2
Reactivity	Human
Host	Rabbit
Clonality	Polyclonal
Isotype	Rabbit IgG
Calculated MW	65492
Antigen Region	488-517

STS Antibody (C-term) - Additional Information**Gene ID** 412**Other Names**

Steryl-sulfatase, Arylsulfatase C, ASC, Steroid sulfatase, Steryl-sulfate sulfohydrolase, STS, ARSC1

Target/Specificity

This STS antibody is generated from rabbits immunized with a KLH conjugated synthetic peptide between 488-517 amino acids from the C-terminal region of human STS.

Dilution

WB~~1:1000

IHC-P~~1:10~50

E~~Use at an assay dependent concentration.

Format

Purified polyclonal antibody supplied in PBS with 0.09% (W/V) sodium azide. This antibody is purified through a protein A column, followed by peptide affinity purification.

Storage

Maintain refrigerated at 2-8°C for up to 2 weeks. For long term storage store at -20°C in small aliquots to prevent freeze-thaw cycles.

Precautions

STS Antibody (C-term) is for research use only and not for use in diagnostic or therapeutic procedures.

STS Antibody (C-term) - Protein Information**Name** STS

Synonyms ARSC1

Function Catalyzes the conversion of sulfated steroid precursors, such as dehydroepiandrosterone sulfate (DHEA-S) and estrone sulfate to the free steroid.

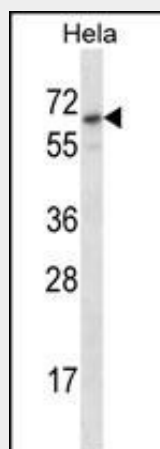
Cellular Location

Cytoplasmic vesicle, secretory vesicle, microneme membrane; Multi-pass membrane protein
Endoplasmic reticulum membrane; Multi-pass membrane protein

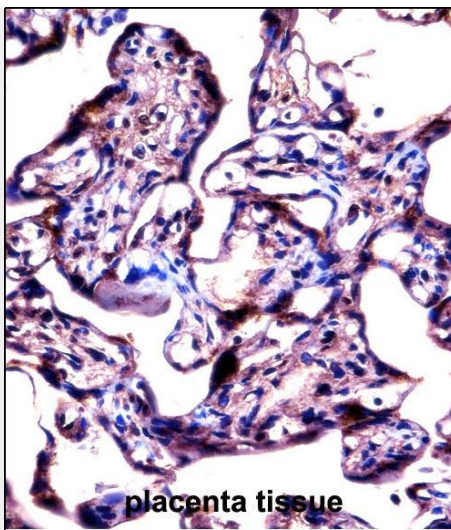
STS Antibody (C-term) - Protocols

Provided below are standard protocols that you may find useful for product applications.

- [Western Blot](#)
- [Blocking Peptides](#)
- [Dot Blot](#)
- [Immunohistochemistry](#)
- [Immunofluorescence](#)
- [Immunoprecipitation](#)
- [Flow Cytometry](#)
- [Cell Culture](#)

STS Antibody (C-term) - Images

STS Antibody (C-term) (Cat. #AP14527b) western blot analysis in HeLa cell line lysates (35ug/lane). This demonstrates the STS antibody detected the STS protein (arrow).



STS Antibody (C-term) (AP14527b) immunohistochemistry analysis in formalin fixed and paraffin embedded human placenta tissue followed by peroxidase conjugation of the secondary antibody and DAB staining. This data demonstrates the use of STS Antibody (C-term) for immunohistochemistry. Clinical relevance has not been evaluated.

STS Antibody (C-term) - Background

The protein encoded by this gene catalyzes the conversion of sulfated steroid precursors to estrogens during pregnancy. The encoded protein is found in the endoplasmic reticulum, where it acts as a homodimer. Mutations in this gene are known to cause X-linked ichthyosis (XLI).

STS Antibody (C-term) - References

Chanplakorn, N., et al. Breast Cancer Res. Treat. 120(3):639-648(2010)
Gruber, R., et al. J. Dermatol. Sci. 58(1):72-75(2010)
Canueto, J., et al. J Eur Acad Dermatol Venereol (2010) In press :
Li, J., et al. Breast Cancer Res. 12 (2), R19 (2010) :
Chakrabarti, B., et al. Autism Res 2(3):157-177(2009)