

**SIGLEC8 Antibody (N-term)**  
**Affinity Purified Rabbit Polyclonal Antibody (Pab)**  
**Catalog # AP14564a****Specification**

---

**SIGLEC8 Antibody (N-term) - Product Information**

|                   |                             |
|-------------------|-----------------------------|
| Application       | WB, IHC-P,E                 |
| Primary Accession | <a href="#">O9NYZ4</a>      |
| Other Accession   | <a href="#">NP_055257.2</a> |
| Reactivity        | Human                       |
| Host              | Rabbit                      |
| Clonality         | Polyclonal                  |
| Isotype           | Rabbit IgG                  |
| Calculated MW     | 54042                       |
| Antigen Region    | 94-122                      |

**SIGLEC8 Antibody (N-term) - Additional Information****Gene ID** 27181**Other Names**

Sialic acid-binding Ig-like lectin 8, Siglec-8, Sialoadhesin family member 2, SAF-2, SIGLEC8, SAF2

**Target/Specificity**

This SIGLEC8 antibody is generated from rabbits immunized with a KLH conjugated synthetic peptide between 94-122 amino acids from the N-terminal region of human SIGLEC8.

**Dilution**

WB~~1:1000

IHC-P~~1:10~50

E~~Use at an assay dependent concentration.

**Format**

Purified polyclonal antibody supplied in PBS with 0.09% (W/V) sodium azide. This antibody is purified through a protein A column, followed by peptide affinity purification.

**Storage**

Maintain refrigerated at 2-8°C for up to 2 weeks. For long term storage store at -20°C in small aliquots to prevent freeze-thaw cycles.

**Precautions**

SIGLEC8 Antibody (N-term) is for research use only and not for use in diagnostic or therapeutic procedures.

**SIGLEC8 Antibody (N-term) - Protein Information****Name** SIGLEC8

### Synonyms SAF2

**Function** Putative adhesion molecule that mediates sialic-acid dependent binding to blood cells (PubMed:[10625619](#), PubMed:[10856141](#)). Preferentially binds to alpha-2,3-linked sialic acid. Also binds to alpha-2,6-linked sialic acid. The sialic acid recognition site may be masked by cis interactions with sialic acids on the same cell surface (PubMed:[10625619](#)). Recognizes simultaneously epitopes having a terminal N-acetylneuraminic acid (sialic acid) and an underlying 6-O-sulfated galactose. Preferentially binds to Gal-6-sulfated sialyl-Lewis X glycan epitopes (PubMed:[27357658](#)).

### Cellular Location

Membrane; Single-pass type I membrane protein.

### Tissue Location

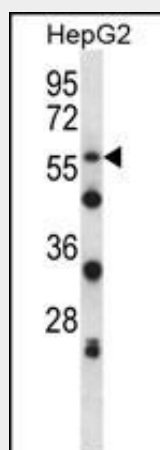
Expressed specifically on blood cells namely basophil, mast cells and eosinophils.

### SIGLEC8 Antibody (N-term) - Protocols

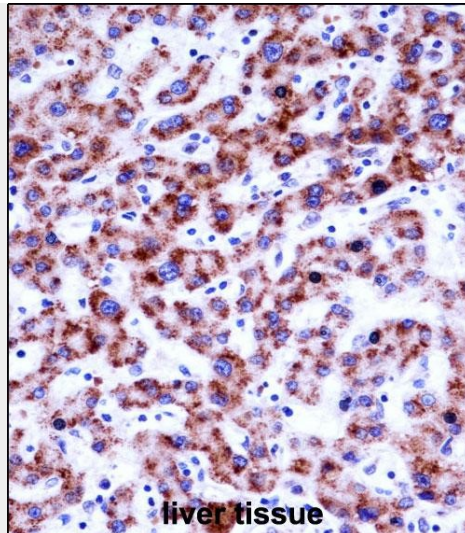
Provided below are standard protocols that you may find useful for product applications.

- [Western Blot](#)
- [Blocking Peptides](#)
- [Dot Blot](#)
- [Immunohistochemistry](#)
- [Immunofluorescence](#)
- [Immunoprecipitation](#)
- [Flow Cytometry](#)
- [Cell Culture](#)

### SIGLEC8 Antibody (N-term) - Images



SIGLEC8 Antibody (N-term) (Cat. #AP14564a) western blot analysis in HepG2 cell line lysates (35ug/lane). This demonstrates the SIGLEC8 antibody detected the SIGLEC8 protein (arrow).



SIGLEC8 Antibody (N-term) (AP14564a) immunohistochemistry analysis in formalin fixed and paraffin embedded human liver tissue followed by peroxidase conjugation of the secondary antibody and DAB staining. This data demonstrates the use of SIGLEC8 Antibody (N-term) for immunohistochemistry. Clinical relevance has not been evaluated.

#### **SIGLEC8 Antibody (N-term) - Background**

Sialic acid-binding immunoglobulin (Ig)-like lectins, or SIGLECs (e.g., CD33 (MIM 159590)), are a family of type 1 transmembrane proteins each having a unique expression pattern, mostly in hemopoietic cells. SIGLEC8 is a member of the CD33-like subgroup of SIGLECs, which are localized to 19q13.3-q13.4 and have 2 conserved cytoplasmic tyrosine-based motifs: an immunoreceptor tyrosine-based inhibitory motif, or ITIM (see MIM 604964), and a motif homologous to one identified in signaling lymphocyte activation molecule (SLAM; MIM 603492) that mediates an association with SLAM-associated protein (SAP; MIM 300490) (summarized by Foussias et al., 2000 [PubMed 11095983]).

#### **SIGLEC8 Antibody (N-term) - References**

Gao, P.S., et al. Eur. J. Hum. Genet. 18(6):713-719(2010)  
Davila, S., et al. Genes Immun. 11(3):232-238(2010)  
Hudson, S.A., et al. J. Pharmacol. Exp. Ther. 330(2):608-612(2009)  
Bochner, B.S. Clin. Exp. Allergy 39(3):317-324(2009)  
von Gunten, S., et al. Autoimmun Rev 7(6):453-456(2008)