

**DUSP15 Antibody (Center)**  
**Affinity Purified Rabbit Polyclonal Antibody (Pab)**  
**Catalog # AP14568C**

**Specification**

---

**DUSP15 Antibody (Center) - Product Information**

Application	WB, IHC-P,E
Primary Accession	<a href="#">O9H1R2</a>
Other Accession	<a href="#">NP_817130.1</a> , <a href="#">NP_001012662.1</a> , <a href="#">NP_542178.2</a>
Reactivity	Human
Host	Rabbit
Clonality	Polyclonal
Isotype	Rabbit IgG
Antigen Region	125-153

**DUSP15 Antibody (Center) - Additional Information**

**Gene ID** 128853

**Other Names**

Dual specificity protein phosphatase 15, VH1-related member Y, Vaccinia virus VH1-related dual-specific protein phosphatase Y, DUSP15, C20orf57, VHY

**Target/Specificity**

This DUSP15 antibody is generated from rabbits immunized with a KLH conjugated synthetic peptide between 125-153 amino acids from the Central region of human DUSP15.

**Dilution**

WB~~1:1000  
IHC-P~~1:10~50  
E~~Use at an assay dependent concentration.

**Format**

Purified polyclonal antibody supplied in PBS with 0.09% (W/V) sodium azide. This antibody is purified through a protein A column, followed by peptide affinity purification.

**Storage**

Maintain refrigerated at 2-8°C for up to 2 weeks. For long term storage store at -20°C in small aliquots to prevent freeze-thaw cycles.

**Precautions**

DUSP15 Antibody (Center) is for research use only and not for use in diagnostic or therapeutic procedures.

**DUSP15 Antibody (Center) - Protein Information**

**Name** DUSP15 ([HGNC:16236](#))

**Function** May dephosphorylate MAPK13, ATF2, ERBB3, PDGFRB and SNX6 (PubMed:[22792334](#)).

**Cellular Location**

Cytoplasm.

**Tissue Location**

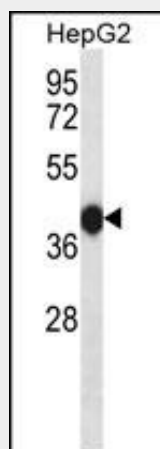
Highly expressed in testis (PubMed:15138252). Expressed in brain; up-regulated in patients with multiple sclerosis gray matter lesions (PubMed:22792334).

**DUSP15 Antibody (Center) - Protocols**

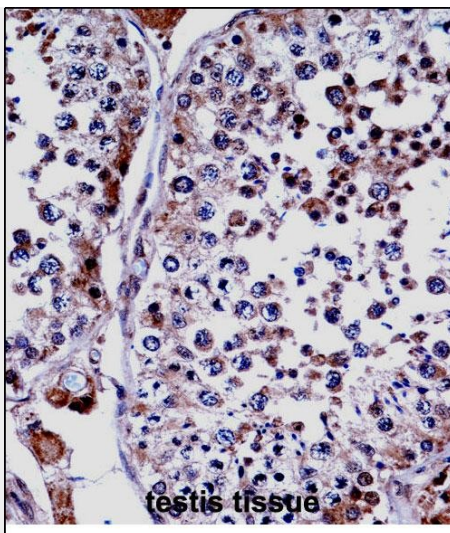
Provided below are standard protocols that you may find useful for product applications.

- [Western Blot](#)
- [Blocking Peptides](#)
- [Dot Blot](#)
- [Immunohistochemistry](#)
- [Immunofluorescence](#)
- [Immunoprecipitation](#)
- [Flow Cytometry](#)
- [Cell Culture](#)

**DUSP15 Antibody (Center) - Images**



DUSP15 Antibody (Center) (Cat. #AP14568c) western blot analysis in HepG2 cell line lysates (35ug/lane). This demonstrates the DUSP15 antibody detected the DUSP15 protein (arrow).



DUSP15 Antibody (Center) (AP14568c) immunohistochemistry analysis in formalin fixed and paraffin embedded human testis tissue followed by peroxidase conjugation of the secondary antibody and DAB staining. This data demonstrates the use of DUSP15 Antibody (Center) for immunohistochemistry. Clinical relevance has not been evaluated.

#### **DUSP15 Antibody (Center) - Background**

The protein encoded by this gene belongs to the non-receptor class of the protein-tyrosine phosphatase family. The encoded protein has both protein-tyrosine phosphatase activity and serine/threonine-specific phosphatase activity, and therefore is known as a dual specificity phosphatase. Three transcript variants encoding two different isoforms have been found for this gene.

#### **DUSP15 Antibody (Center) - References**

Wu, C., et al. Proteomics 7(11):1775-1785(2007)  
Lamesch, P., et al. Genomics 89(3):307-315(2007)  
Yoon, T.S., et al. Proteins 61(3):694-697(2005)  
Alonso, A., et al. J. Biol. Chem. 279(31):32586-32591(2004)  
Alonso, A., et al. J. Biol. Chem. 279(31):32586-32591(2004)