

SCGN Antibody (N-term)
Purified Rabbit Polyclonal Antibody (Pab)
Catalog # AP1458a**Specification**

SCGN Antibody (N-term) - Product Information

Application	FC, IHC-P, WB,E
Primary Accession	076038
Reactivity	Human
Host	Rabbit
Clonality	Polyclonal
Isotype	Rabbit IgG
Calculated MW	32040
Antigen Region	54-84

SCGN Antibody (N-term) - Additional Information**Gene ID** 10590**Other Names**

Secretagogin, SCGN, SECRET

Target/Specificity

This SCGN antibody is generated from rabbits immunized with a KLH conjugated synthetic peptide between 54-84 amino acids from the N-terminal region of human SCGN.

Dilution

FC~~1:10~50

IHC-P~~1:10~50

WB~~1:1000

E~~Use at an assay dependent concentration.

Format

Purified polyclonal antibody supplied in PBS with 0.09% (W/V) sodium azide. This antibody is prepared by Saturated Ammonium Sulfate (SAS) precipitation followed by dialysis against PBS.

Storage

Maintain refrigerated at 2-8°C for up to 2 weeks. For long term storage store at -20°C in small aliquots to prevent freeze-thaw cycles.

Precautions

SCGN Antibody (N-term) is for research use only and not for use in diagnostic or therapeutic procedures.

SCGN Antibody (N-term) - Protein Information**Name** SCGN

Synonyms SECRET**Cellular Location**

Cytoplasm. Secreted. Cytoplasmic vesicle, secretory vesicle membrane; Peripheral membrane protein; Cytoplasmic side Note=Predominantly cytoplasmic. A small proportion is associated with secretory granules and membrane fractions (By similarity). Detectable in human serum after ischemic neuronal damage.

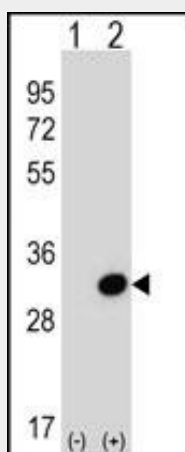
Tissue Location

Expressed at high levels in the pancreatic islets of Langerhans and to a much lesser extent in the gastrointestinal tract (stomach, small intestine and colon), the adrenal medulla and cortex and the thyroid C-cells. In the brain, the expression is restricted to distinct subtypes of neurons with highest expression in the molecular layer of the cerebellum (stellate and basket cells), in the anterior part of the pituitary gland, in the thalamus, in the hypothalamus and in a subgroup of neocortical neurons.

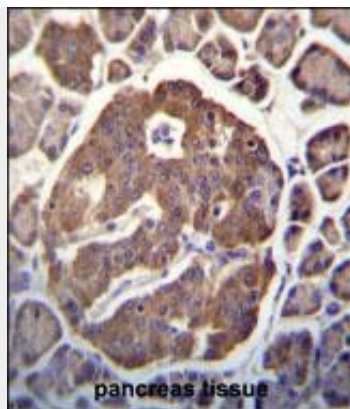
SCGN Antibody (N-term) - Protocols

Provided below are standard protocols that you may find useful for product applications.

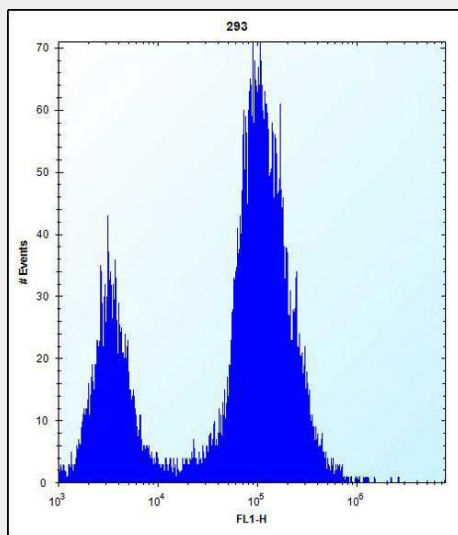
- [Western Blot](#)
- [Blocking Peptides](#)
- [Dot Blot](#)
- [Immunohistochemistry](#)
- [Immunofluorescence](#)
- [Immunoprecipitation](#)
- [Flow Cytometry](#)
- [Cell Culture](#)

SCGN Antibody (N-term) - Images

Western blot analysis of *SCGN (arrow) using rabbit polyclonal *SCGN Antibody (N-term) (Cat.#AP1458a). 293 cell lysates (2 ug/lane) either nontransfected (Lane 1) or transiently transfected (Lane 2) with the *SCGN gene.



SCGN Antibody (N-term) (Cat. #AP1458a) immunohistochemistry analysis in formalin fixed and paraffin embedded human pancreas tissue followed by peroxidase conjugation of the secondary antibody and DAB staining. This data demonstrates the use of SCGN Antibody (N-term) for immunohistochemistry. Clinical relevance has not been evaluated.



SCGN) Antibody (N-term) (Cat. #AP1458a) flow cytometric analysis of 293 cells (right histogram) compared to a negative control cell (left histogram). FITC-conjugated goat-anti-rabbit secondary antibodies were used for the analysis.

SCGN Antibody (N-term) - Background

SCGN is a secreted calcium-binding protein which is found in the cytoplasm. It is related to calbindin D-28K and calretinin. SCGN is thought to be involved in KCL-stimulated calcium flux and cell proliferation.

SCGN Antibody (N-term) - References

- Skovhus, K.V., Scand. J. Immunol. 64 (6), 639-645 (2006)
- Zierhut, B., Biochem. Biophys. Res. Commun. 329 (4), 1193-1199 (2005)
- Mungall, A.J., Nature 425 (6960), 805-811 (2003)
- Zhan, X., Pituitary 6 (4), 189-202 (2003)