

**SNAP23 Antibody (C-term)**  
**Affinity Purified Rabbit Polyclonal Antibody (Pab)**  
**Catalog # AP14590b****Specification**

---

**SNAP23 Antibody (C-term) - Product Information**

Application	IHC-P, WB,E
Primary Accession	<a href="#">O00161</a>
Other Accession	<a href="#">NP_003816.2</a> , <a href="#">NP_570710.1</a>
Reactivity	Human
Host	Rabbit
Clonality	Polyclonal
Isotype	Rabbit IgG
Calculated MW	23354
Antigen Region	170-199

**SNAP23 Antibody (C-term) - Additional Information****Gene ID** 8773**Other Names**

Synaptosomal-associated protein 23, SNAP-23, Vesicle-membrane fusion protein SNAP-23, SNAP23

**Target/Specificity**

This SNAP23 antibody is generated from rabbits immunized with a KLH conjugated synthetic peptide between 170-199 amino acids from the C-terminal region of human SNAP23.

**Dilution**

IHC-P~~1:10~50

WB~~1:1000

E~~Use at an assay dependent concentration.

**Format**

Purified polyclonal antibody supplied in PBS with 0.09% (W/V) sodium azide. This antibody is purified through a protein A column, followed by peptide affinity purification.

**Storage**

Maintain refrigerated at 2-8°C for up to 2 weeks. For long term storage store at -20°C in small aliquots to prevent freeze-thaw cycles.

**Precautions**

SNAP23 Antibody (C-term) is for research use only and not for use in diagnostic or therapeutic procedures.

**SNAP23 Antibody (C-term) - Protein Information****Name** SNAP23

**Function** Essential component of the high affinity receptor for the general membrane fusion machinery and an important regulator of transport vesicle docking and fusion.

**Cellular Location**

Cell membrane; Peripheral membrane protein. Cell membrane; Lipid-anchor. Synapse, synaptosome. Note=Mainly localized to the plasma membrane

**Tissue Location**

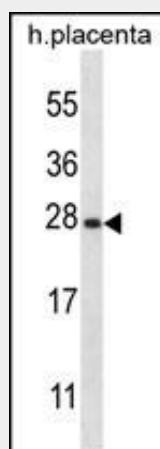
Ubiquitous. Highest levels where found in placenta.

**SNAP23 Antibody (C-term) - Protocols**

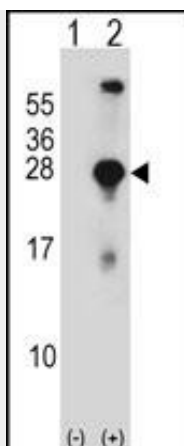
Provided below are standard protocols that you may find useful for product applications.

- [Western Blot](#)
- [Blocking Peptides](#)
- [Dot Blot](#)
- [Immunohistochemistry](#)
- [Immunofluorescence](#)
- [Immunoprecipitation](#)
- [Flow Cytometry](#)
- [Cell Culture](#)

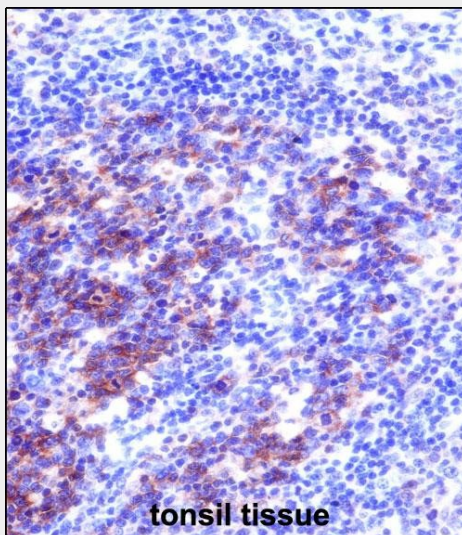
**SNAP23 Antibody (C-term) - Images**



SNAP23 Antibody (C-term) (Cat. #AP14590b) western blot analysis in human placenta tissue lysates (35ug/lane). This demonstrates the SNAP23 antibody detected the SNAP23 protein (arrow).



Western blot analysis of SNAP23 (arrow) using rabbit polyclonal SNAP23 Antibody (C-term) (Cat. #AP14590b). 293 cell lysates (2 ug/lane) either nontransfected (Lane 1) or transiently transfected (Lane 2) with the SNAP23 gene.



SNAP23 Antibody (C-term) (AP14590b) immunohistochemistry analysis in formalin fixed and paraffin embedded human tonsil tissue followed by peroxidase conjugation of the secondary antibody and DAB staining. This data demonstrates the use of SNAP23 Antibody (C-term) for immunohistochemistry. Clinical relevance has not been evaluated.

### SNAP23 Antibody (C-term) - Background

Specificity of vesicular transport is regulated, in part, by the interaction of a vesicle-associated membrane protein termed synaptobrevin/VAMP with a target compartment membrane protein termed syntaxin. These proteins, together with SNAP25 (synaptosome-associated protein of 25 kDa), form a complex which serves as a binding site for the general membrane fusion machinery. Synaptobrevin/VAMP and syntaxin are believed to be involved in vesicular transport in most, if not all cells, while SNAP25 is present almost exclusively in the brain, suggesting that a ubiquitously expressed homolog of SNAP25 exists to facilitate transport vesicle/target membrane fusion in other tissues. The protein encoded by this gene is structurally and functionally similar to SNAP25 and binds tightly to multiple syntaxins and synaptobrevins/VAMPs. It is an essential component of the high

affinity receptor for the general membrane fusion machinery and is an important regulator of transport vesicle docking and fusion. Two alternative transcript variants encoding different protein isoforms have been described for this gene.

#### **SNAP23 Antibody (C-term) - References**

Greaves, J., et al. J. Biol. Chem. 285(32):24629-24638(2010)  
Bostrom, P., et al. Diabetes 59(8):1870-1878(2010)  
Ban, H.J., et al. BMC Genet. 11, 26 (2010) :  
Kean, M.J., et al. J. Cell. Sci. 122 (PT 22), 4089-4098 (2009) :  
Gratacos, M., et al. Am. J. Med. Genet. B Neuropsychiatr. Genet. 150B (6), 808-816 (2009) :