

**P2RY1 Antibody (Center)**  
**Affinity Purified Rabbit Polyclonal Antibody (Pab)**  
**Catalog # AP14591c**

**Specification**

---

**P2RY1 Antibody (Center) - Product Information**

Application	WB,E
Primary Accession	<a href="#">P47900</a>
Other Accession	<a href="#">P49651</a> , <a href="#">P34996</a> , <a href="#">P48042</a> , <a href="#">NP_002554.1</a>
Reactivity	Human
Predicted	Bovine, Chicken, Rat
Host	Rabbit
Clonality	Polyclonal
Isotype	Rabbit IgG
Calculated MW	42072
Antigen Region	231-260

**P2RY1 Antibody (Center) - Additional Information**

**Gene ID** 5028

**Other Names**

P2Y purinoceptor 1, P2Y1, ATP receptor, Purinergic receptor, P2RY1

**Target/Specificity**

This P2RY1 antibody is generated from rabbits immunized with a KLH conjugated synthetic peptide between 231-260 amino acids from the Central region of human P2RY1.

**Dilution**

WB~~1:1000

E~~Use at an assay dependent concentration.

**Format**

Purified polyclonal antibody supplied in PBS with 0.09% (W/V) sodium azide. This antibody is purified through a protein A column, followed by peptide affinity purification.

**Storage**

Maintain refrigerated at 2-8°C for up to 2 weeks. For long term storage store at -20°C in small aliquots to prevent freeze-thaw cycles.

**Precautions**

P2RY1 Antibody (Center) is for research use only and not for use in diagnostic or therapeutic procedures.

**P2RY1 Antibody (Center) - Protein Information**

**Name** P2RY1

**Function** Receptor for extracellular adenine nucleotides such as ADP (PubMed:[25822790](#), PubMed:[9038354](#), PubMed:[9442040](#)). In platelets, binding to ADP leads to mobilization of intracellular calcium ions via activation of phospholipase C, a change in platelet shape, and ultimately platelet aggregation (PubMed:[9442040](#)).

**Cellular Location**

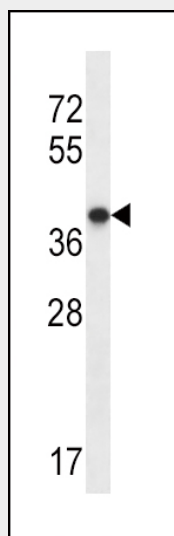
Cell membrane; Multi-pass membrane protein

**P2RY1 Antibody (Center) - Protocols**

Provided below are standard protocols that you may find useful for product applications.

- [Western Blot](#)
- [Blocking Peptides](#)
- [Dot Blot](#)
- [Immunohistochemistry](#)
- [Immunofluorescence](#)
- [Immunoprecipitation](#)
- [Flow Cytometry](#)
- [Cell Culture](#)

**P2RY1 Antibody (Center) - Images**



P2RY1 Antibody (Center) (Cat. #AP14591c) western blot analysis in NCI-H292 cell line lysates (35ug/lane). This demonstrates the P2RY1 antibody detected the P2RY1 protein (arrow).

**P2RY1 Antibody (Center) - Background**

The product of this gene belongs to the family of G-protein coupled receptors. This family has several receptor subtypes with different pharmacological selectivity, which overlaps in some cases, for various adenosine and uridine nucleotides. This receptor functions as a receptor for extracellular ATP and ADP. In platelets binding to ADP leads to mobilization of intracellular calcium ions via activation of phospholipase C, a change in platelet shape, and probably to platelet aggregation. [provided by RefSeq].

**P2RY1 Antibody (Center) - References**

Bailey, S.D., et al. Diabetes Care 33(10):2250-2253(2010)  
Maloney, S.F., et al. Integr Biol (Camb) 2(4):183-192(2010)  
Nisar, S., et al. Traffic 11(4):508-519(2010)  
Kumar, T.S., et al. J. Med. Chem. 53(6):2562-2576(2010)  
Bambace, N.M., et al. Platelets 21(2):85-93(2010)