

NEDD9 Antibody (Center)
Affinity Purified Rabbit Polyclonal Antibody (Pab)
Catalog # AP14592c

Specification

NEDD9 Antibody (Center) - Product Information

Application	IHC-P, WB,E
Primary Accession	Q14511
Other Accession	NP_006394.1 , NP_892011.2
Reactivity	Human
Host	Rabbit
Clonality	Polyclonal
Isotype	Rabbit IgG
Calculated MW	92861
Antigen Region	335-363

NEDD9 Antibody (Center) - Additional Information

Gene ID 4739

Other Names

Enhancer of filamentation 1, hEF1, CRK-associated substrate-related protein, CAS-L, CasL, Cas scaffolding protein family member 2, Neural precursor cell expressed developmentally down-regulated protein 9, NEDD-9, Renal carcinoma antigen NY-REN-12, p105, Enhancer of filamentation 1 p55, NEDD9, CASL, CASS2

Target/Specificity

This NEDD9 antibody is generated from rabbits immunized with a KLH conjugated synthetic peptide between 335-363 amino acids from the Central region of human NEDD9.

Dilution

IHC-P~~1:10~50

WB~~1:1000

E~~Use at an assay dependent concentration.

Format

Purified polyclonal antibody supplied in PBS with 0.09% (W/V) sodium azide. This antibody is purified through a protein A column, followed by peptide affinity purification.

Storage

Maintain refrigerated at 2-8°C for up to 2 weeks. For long term storage store at -20°C in small aliquots to prevent freeze-thaw cycles.

Precautions

NEDD9 Antibody (Center) is for research use only and not for use in diagnostic or therapeutic procedures.

NEDD9 Antibody (Center) - Protein Information

Name NEDD9 ([HGNC:7733](#))

Function Scaffolding protein which plays a central coordinating role for tyrosine-kinase-based signaling related to cell adhesion (PubMed:[24574519](#)). As a focal adhesion protein, plays a role in embryonic fibroblast migration (By similarity). May play an important role in integrin beta-1 or B cell antigen receptor (BCR) mediated signaling in B- and T-cells. Integrin beta-1 stimulation leads to recruitment of various proteins including CRKL and SHPTP2 to the tyrosine phosphorylated form (PubMed:[9020138](#)). Promotes adhesion and migration of lymphocytes; as a result required for the correct migration of lymphocytes to the spleen and other secondary lymphoid organs (PubMed:[17174122](#)). Plays a role in the organization of T-cell F- actin cortical cytoskeleton and the centralization of T-cell receptor microclusters at the immunological synapse (By similarity). Negatively regulates cilia outgrowth in polarized cysts (By similarity). Modulates cilia disassembly via activation of AURKA-mediated phosphorylation of HDAC6 and subsequent deacetylation of alpha-tubulin (PubMed:[17604723](#)). Positively regulates RANKL-induced osteoclastogenesis (By similarity). Required for the maintenance of hippocampal dendritic spines in the dentate gyrus and CA1 regions, thereby involved in spatial learning and memory (By similarity).

Cellular Location

Cytoplasm, cell cortex. Nucleus. Golgi apparatus. Cell projection, lamellipodium. Cytoplasm. Cell junction, focal adhesion. Cytoplasm, cytoskeleton. Cytoplasm, cytoskeleton, spindle pole. Cell projection, cilium. Cytoplasm, cytoskeleton, cilium basal body Basolateral cell membrane {ECO:0000250|UniProtKB:A0A8I3PDQ1}

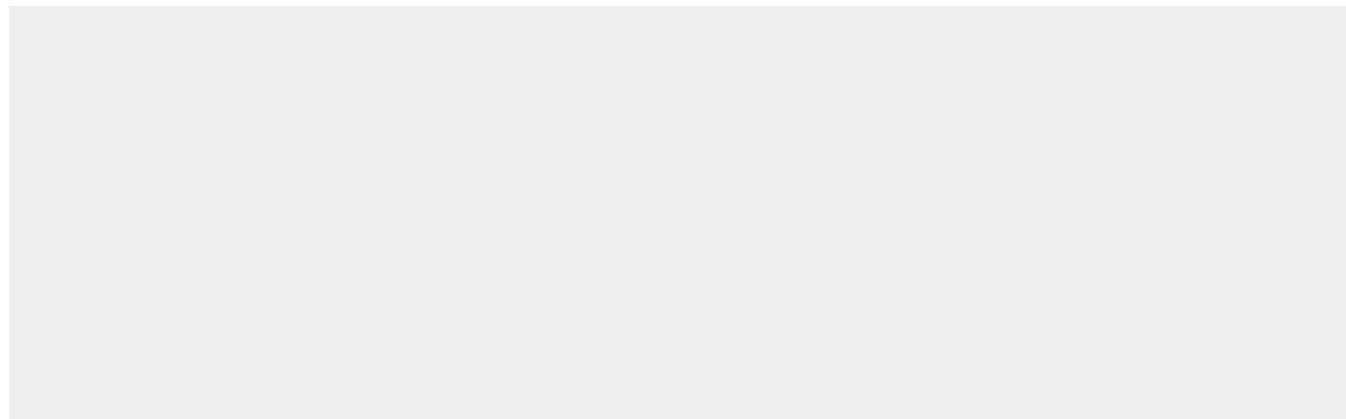
Tissue Location

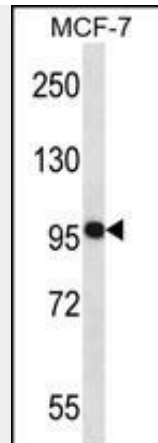
Expressed in B-cells (at protein level) (PubMed:9020138). Expressed in the respiratory epithelium of the main bronchi to the bronchioles in the lungs (at protein level) (PubMed:9584194). High levels detected in kidney, lung, and placenta (PubMed:9584194). Expressed in lymphocytes (PubMed:9497377)

NEDD9 Antibody (Center) - Protocols

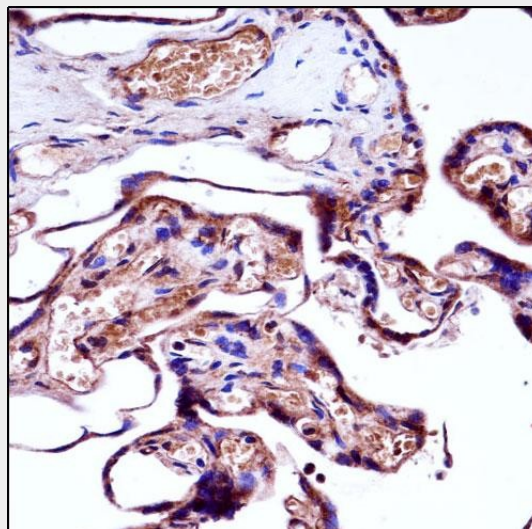
Provided below are standard protocols that you may find useful for product applications.

- [Western Blot](#)
- [Blocking Peptides](#)
- [Dot Blot](#)
- [Immunohistochemistry](#)
- [Immunofluorescence](#)
- [Immunoprecipitation](#)
- [Flow Cytometry](#)
- [Cell Culture](#)

NEDD9 Antibody (Center) - Images



NEDD9 Antibody (Center) (Cat. #AP14592c) western blot analysis in MCF-7 cell line lysates (35ug/lane). This demonstrates the NEDD9 antibody detected the NEDD9 protein (arrow).



NEDD9 Antibody (Center) (AP14592c) immunohistochemistry analysis in formalin fixed and paraffin embedded human placenta tissue followed by peroxidase conjugation of the secondary antibody and DAB staining. This data demonstrates the use of NEDD9 Antibody (Center) for immunohistochemistry. Clinical relevance has not been evaluated.

NEDD9 Antibody (Center) - Background

Docking protein which plays a central coordinating role for tyrosine-kinase-based signaling related to cell adhesion. May function in transmitting growth control signals between focal adhesions at the cell periphery and the mitotic spindle in response to adhesion or growth factor signals initiating cell proliferation. May play an important role in integrin beta-1 or B cell antigen receptor (BCR) mediated signaling in B- and T-cells. Integrin beta-1 stimulation leads to recruitment of various proteins including CRK, NCK and SHPTP2 to the tyrosine phosphorylated form.

NEDD9 Antibody (Center) - References

Corneveaux, J.J., et al. Hum. Mol. Genet. 19(16):3295-3301(2010)
Lucas, J.T. Jr., et al. Oncogene 29(31):4449-4459(2010)
Tedde, A., et al. Neurosci. Lett. 477(3):121-123(2010)
Malleter, M., et al. Int. J. Mol. Med. 25(6):897-903(2010)
Laumet, G., et al. J. Alzheimers Dis. 20(4):1181-1188(2010)

NEDD9 Antibody (Center) - Citations

- [Overexpression of NEDD9 promotes cell invasion and metastasis in hepatocellular carcinoma.](#)