

WNT3A Antibody (Center)
Affinity Purified Rabbit Polyclonal Antibody (Pab)
Catalog # AP14596c**Specification**

WNT3A Antibody (Center) - Product Information

Application	WB, IHC-P,E
Primary Accession	P56704
Other Accession	P17553 , P56703 , P31285 , P27467 , Q2LMP1 , NP_149122.1
Reactivity	Human
Predicted	Chicken, Mouse, Xenopus
Host	Rabbit
Clonality	Polyclonal
Isotype	Rabbit IgG
Antigen Region	151-180

WNT3A Antibody (Center) - Additional Information**Gene ID** 89780**Other Names**

Protein Wnt-3a, WNT3A

Target/Specificity

This WNT3A antibody is generated from rabbits immunized with a KLH conjugated synthetic peptide between 151-180 amino acids from the Central region of human WNT3A.

Dilution

WB~~1:1000

IHC-P~~1:10~50

Format

Purified polyclonal antibody supplied in PBS with 0.09% (W/V) sodium azide. This antibody is purified through a protein A column, followed by peptide affinity purification.

Storage

Maintain refrigerated at 2-8°C for up to 2 weeks. For long term storage store at -20°C in small aliquots to prevent freeze-thaw cycles.

Precautions

WNT3A Antibody (Center) is for research use only and not for use in diagnostic or therapeutic procedures.

WNT3A Antibody (Center) - Protein Information**Name** WNT3A

Function Ligand for members of the frizzled family of seven transmembrane receptors (Probable). Functions in the canonical Wnt signaling pathway that results in activation of transcription factors of the TCF/LEF family (PubMed:[20093360](#), PubMed:[21244856](#), PubMed:[24841207](#), PubMed:[26902720](#)). Required for normal embryonic mesoderm development and formation of caudal somites. Required for normal morphogenesis of the developing neural tube (By similarity). Mediates self-renewal of the stem cells at the bottom on intestinal crypts (in vitro) (PubMed:[26902720](#)).

Cellular Location

Secreted, extracellular space, extracellular matrix {ECO:0000250|UniProtKB:P27467}. Secreted

Tissue Location

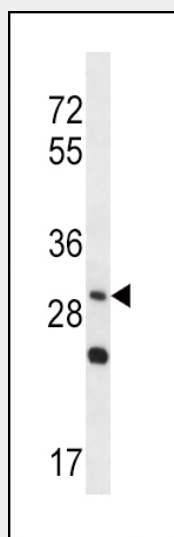
Moderately expressed in placenta and at low levels in adult lung, spleen, and prostate.

WNT3A Antibody (Center) - Protocols

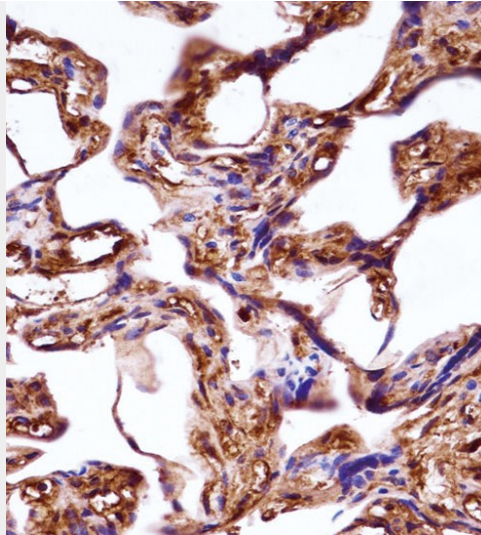
Provided below are standard protocols that you may find useful for product applications.

- [Western Blot](#)
- [Blocking Peptides](#)
- [Dot Blot](#)
- [Immunohistochemistry](#)
- [Immunofluorescence](#)
- [Immunoprecipitation](#)
- [Flow Cytometry](#)
- [Cell Culture](#)

WNT3A Antibody (Center) - Images



WNT3A Antibody (Center) (Cat. #AP14596c) western blot analysis in NCI-H292 cell line lysates (35ug/lane). This demonstrates the WNT3A antibody detected the WNT3A protein (arrow).



WNT3A Antibody (Center) (AP14596c) immunohistochemistry analysis in formalin fixed and paraffin embedded human placenta tissue followed by peroxidase conjugation of the secondary antibody and DAB staining. This data demonstrates the use of WNT3A Antibody (Center) for immunohistochemistry. Clinical relevance has not been evaluated.

WNT3A Antibody (Center) - Background

The WNT gene family consists of structurally related genes which encode secreted signaling proteins. These proteins have been implicated in oncogenesis and in several developmental processes, including regulation of cell fate and patterning during embryogenesis. This gene is a member of the WNT gene family. It encodes a protein which shows 96% amino acid identity to mouse Wnt3A protein, and 84% to human WNT3 protein, another WNT gene product. This gene is clustered with WNT14 gene, another family member, in chromosome 1q42 region.

WNT3A Antibody (Center) - References

Sengupta, P.K., et al. J. Biol. Chem. 285(41):31164-31173(2010)
Hubner, R., et al. Biochem. Biophys. Res. Commun. 400(3):358-362(2010)
von Marschall, Z., et al. Biochem. Biophys. Res. Commun. 400(3):299-304(2010)
Shin, H., et al. J. Dermatol. Sci. 58(2):91-96(2010)
Jugessur, A., et al. PLoS ONE 5 (7), E11493 (2010) :