

MIPEP Antibody (N-term)
Purified Rabbit Polyclonal Antibody (Pab)
Catalog # AP1459a**Specification**

MIPEP Antibody (N-term) - Product Information

Application	IHC-P, WB,E
Primary Accession	Q99797
Reactivity	Human
Host	Rabbit
Clonality	Polyclonal
Isotype	Rabbit IgG
Calculated MW	80641
Antigen Region	180-209

MIPEP Antibody (N-term) - Additional Information**Gene ID** 4285**Other Names**

Mitochondrial intermediate peptidase, MIP, MIPEP, MIP

Target/Specificity

This MIPEP antibody is generated from rabbits immunized with a KLH conjugated synthetic peptide between 180-209 amino acids from the N-terminal region of human MIPEP.

Dilution

IHC-P~~1:10~50

WB~~1:1000

E~~Use at an assay dependent concentration.

Format

Purified polyclonal antibody supplied in PBS with 0.09% (W/V) sodium azide. This antibody is prepared by Saturated Ammonium Sulfate (SAS) precipitation followed by dialysis against PBS.

Storage

Maintain refrigerated at 2-8°C for up to 2 weeks. For long term storage store at -20°C in small aliquots to prevent freeze-thaw cycles.

Precautions

MIPEP Antibody (N-term) is for research use only and not for use in diagnostic or therapeutic procedures.

MIPEP Antibody (N-term) - Protein Information**Name** MIPEP**Synonyms** MIP

Function Cleaves proteins, imported into the mitochondrion, to their mature size.

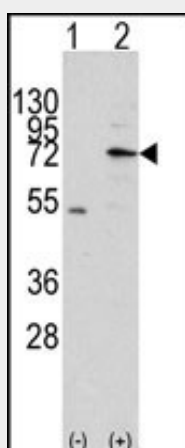
Cellular Location
Mitochondrion matrix.

MIPEP Antibody (N-term) - Protocols

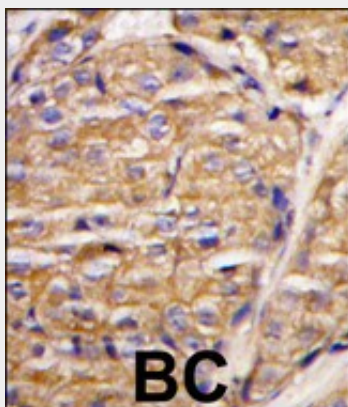
Provided below are standard protocols that you may find useful for product applications.

- [Western Blot](#)
- [Blocking Peptides](#)
- [Dot Blot](#)
- [Immunohistochemistry](#)
- [Immunofluorescence](#)
- [Immunoprecipitation](#)
- [Flow Cytometry](#)
- [Cell Culture](#)

MIPEP Antibody (N-term) - Images



Western blot analysis of MIPEP (arrow) using rabbit polyclonal MIPEP Antibody (N-term) (Cat.#AP1459a). 293 cell lysates (2 ug/lane) either nontransfected (Lane 1) or transiently transfected with the MIPEP gene (Lane 2) (Origene Technologies).



Formalin-fixed and paraffin-embedded human breast carcinoma tissue reacted with MIPEP antibody (N-term) (Cat.#AP1459a), which was peroxidase-conjugated to the secondary antibody,

followed by DAB staining. This data demonstrates the use of this antibody for immunohistochemistry; clinical relevance has not been evaluated.

MIPEP Antibody (N-term) - Background

MIPEP performs the final step in processing a specific class of nuclear-encoded proteins targeted to the mitochondrial matrix or inner membrane. This protein is primarily involved in the maturation of oxidative phosphorylation (OXPHOS)-related proteins. This protein may contribute to the functional effects of frataxin deficiency and the clinical manifestations of Friedreich ataxia.

MIPEP Antibody (N-term) - References

Chew A., Genomics 40:493-496(1997).