

**CGB/hCG-Beta Antibody (Center)**  
**Affinity Purified Rabbit Polyclonal Antibody (Pab)**  
**Catalog # AP14603C****Specification**

---

**CGB/hCG-Beta Antibody (Center) - Product Information**

Application	WB,E
Primary Accession	<a href="#">A6NKO9</a>
Other Accession	<a href="#">P0DN87</a> , <a href="#">P0DN86</a> , <a href="#">Q6NT52</a>
Reactivity	Human
Host	Rabbit
Clonality	Polyclonal
Isotype	Rabbit IgG
Antigen Region	100-130

**CGB/hCG-Beta Antibody (Center) - Additional Information****Gene ID** 114335**Other Names**

Choriogonadotropin subunit beta, CG-beta, Chorionic gonadotrophin chain beta, CGB, CGB3

**Target/Specificity**

This CGB/hCG-Beta antibody is generated from rabbits immunized with a KLH conjugated synthetic peptide between 100-130 amino acids from the Central region of human CGB1

**Dilution**

WB~~1:1000

E~~Use at an assay dependent concentration.

**Format**

Purified polyclonal antibody supplied in PBS with 0.09% (W/V) sodium azide. This antibody is purified through a protein A column, followed by peptide affinity purification.

**Storage**

Maintain refrigerated at 2-8°C for up to 2 weeks. For long term storage store at -20°C in small aliquots to prevent freeze-thaw cycles.

**Precautions**

CGB/hCG-Beta Antibody (Center) is for research use only and not for use in diagnostic or therapeutic procedures.

**CGB/hCG-Beta Antibody (Center) - Protein Information****Name** CGB1**Cellular Location**

Secreted.

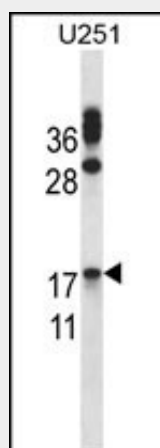
**Tissue Location**

Expressed in placenta, testis and pituitary.

**CGB/hCG-Beta Antibody (Center) - Protocols**

Provided below are standard protocols that you may find useful for product applications.

- [Western Blot](#)
- [Blocking Peptides](#)
- [Dot Blot](#)
- [Immunohistochemistry](#)
- [Immunofluorescence](#)
- [Immunoprecipitation](#)
- [Flow Cytometry](#)
- [Cell Culture](#)

**CGB/hCG-Beta Antibody (Center) - Images**

CGB/HCG-Beta Antibody (Center) (Cat. #AP14603c) western blot analysis in U251 cell line lysates (35ug/lane). This demonstrates the CGB/HCG-Beta antibody detected the CGB/HCG-Beta protein (arrow).

**CGB/hCG-Beta Antibody (Center) - Background**

This gene is a member of the glycoprotein hormone beta chain family and encodes the beta 3 subunit of chorionic gonadotropin (CG). Glycoprotein hormones are heterodimers consisting of a common alpha subunit and a unique beta subunit which confers biological specificity. CG is produced by the trophoblastic cells of the placenta and stimulates the ovaries to synthesize the steroids that are essential for the maintenance of pregnancy. The beta subunit of CG is encoded by 6 genes which are arranged in tandem and inverted pairs on chromosome 19q13.3 and contiguous with the luteinizing hormone beta subunit gene.

**CGB/hCG-Beta Antibody (Center) - References**

Cole, L.A. Placenta 31(8):653-664(2010) Ra, Y.J., et al. Interact Cardiovasc Thorac Surg 11(1):114-116(2010) Verma, B., et al. J. Immunol. 184(4):2156-2165(2010) Handschuh, K., et al. Placenta 30(12):1016-1022(2009) Reisenbichler, E.S., et al. Breast J 15(5):527-530(2009)