

Mouse Adck1 Antibody (C-term)
Affinity Purified Rabbit Polyclonal Antibody (Pab)
Catalog # AP14607b

Specification

Mouse Adck1 Antibody (C-term) - Product Information

Application	WB,E
Primary Accession	O9D0L4
Other Accession	NP_082381.1
Reactivity	Mouse
Host	Rabbit
Clonality	Polyclonal
Isotype	Rabbit IgG
Calculated MW	59736
Antigen Region	448-475

Mouse Adck1 Antibody (C-term) - Additional Information

Gene ID 72113

Other Names

Uncharacterized aarF domain-containing protein kinase 1, 2711-, Adck1

Target/Specificity

This Mouse Adck1 antibody is generated from rabbits immunized with a KLH conjugated synthetic peptide between 448-475 amino acids from the C-terminal region of mouse Adck1.

Dilution

WB~~1:1000

E~~Use at an assay dependent concentration.

Format

Purified polyclonal antibody supplied in PBS with 0.09% (W/V) sodium azide. This antibody is purified through a protein A column, followed by peptide affinity purification.

Storage

Maintain refrigerated at 2-8°C for up to 2 weeks. For long term storage store at -20°C in small aliquots to prevent freeze-thaw cycles.

Precautions

Mouse Adck1 Antibody (C-term) is for research use only and not for use in diagnostic or therapeutic procedures.

Mouse Adck1 Antibody (C-term) - Protein Information

Name Adck1

Function Appears to be essential for maintaining mitochondrial cristae formation and

mitochondrial function by acting via YME1L1 in a kinase- independent manner to regulate essential mitochondrial structural proteins OPA1 and IMMT (By similarity). The action of this enzyme is not yet clear. It is not known if it has protein kinase activity and what type of substrate it would phosphorylate (Ser, Thr or Tyr) (Probable).

Cellular Location

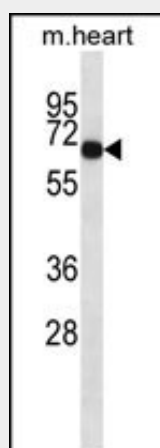
Mitochondrion {ECO:0000250|UniProtKB:Q86TW2}.

Mouse Adck1 Antibody (C-term) - Protocols

Provided below are standard protocols that you may find useful for product applications.

- [Western Blot](#)
- [Blocking Peptides](#)
- [Dot Blot](#)
- [Immunohistochemistry](#)
- [Immunofluorescence](#)
- [Immunoprecipitation](#)
- [Flow Cytometry](#)
- [Cell Culture](#)

Mouse Adck1 Antibody (C-term) - Images



Mouse Adck1 Antibody (C-term) (Cat. #AP14607b) western blot analysis in mouse heart tissue lysates (35ug/lane). This demonstrates the Adck1 antibody detected the Adck1 protein (arrow).

Mouse Adck1 Antibody (C-term) - Background

The function of this protein is not yet clear. It is not known if it has protein kinase activity and what type of substrate it would phosphorylate (Ser, Thr or Tyr).

Mouse Adck1 Antibody (C-term) - References

Pagliarini, D.J., et al. Cell 134(1):112-123(2008)
Rizzo, P., et al. J. Protein Chem. 18(5):523-532(1999)