

**Mouse Clk1 Antibody (N-term)**  
**Affinity Purified Rabbit Polyclonal Antibody (Pab)**  
**Catalog # AP14613a**

**Specification**

---

**Mouse Clk1 Antibody (N-term) - Product Information**

Application	WB,E
Primary Accession	<a href="#">P22518</a>
Reactivity	Mouse
Host	Rabbit
Clonality	Polyclonal
Isotype	Rabbit IgG
Calculated MW	57093
Antigen Region	53-80

**Mouse Clk1 Antibody (N-term) - Additional Information**

**Gene ID** 12747

**Other Names**

Dual specificity protein kinase CLK1, CDC-like kinase 1, Protein kinase STY, Clk1, Clk, Sty

**Target/Specificity**

This Mouse Clk1 antibody is generated from rabbits immunized with a KLH conjugated synthetic peptide between 53-80 amino acids from the N-terminal region of mouse Clk1.

**Dilution**

WB~~1:1000

E~~Use at an assay dependent concentration.

**Format**

Purified polyclonal antibody supplied in PBS with 0.09% (W/V) sodium azide. This antibody is purified through a protein A column, followed by peptide affinity purification.

**Storage**

Maintain refrigerated at 2-8°C for up to 2 weeks. For long term storage store at -20°C in small aliquots to prevent freeze-thaw cycles.

**Precautions**

Mouse Clk1 Antibody (N-term) is for research use only and not for use in diagnostic or therapeutic procedures.

**Mouse Clk1 Antibody (N-term) - Protein Information**

**Name** Clk1 {ECO:0000312|MGI:MGI:107403}

**Function** Dual specificity kinase acting on both serine/threonine and tyrosine-containing substrates (PubMed:[1825055](#), PubMed:[1986248](#), PubMed:[9307018](#)). Phosphorylates serine- and

arginine-rich (SR) proteins of the spliceosomal complex and may be a constituent of a network of regulatory mechanisms that enable SR proteins to control RNA splicing. Phosphorylates: SRSF1, SRSF3 and PTPN1 (PubMed:[8617202](#), PubMed:[9307018](#)). Regulates the alternative splicing of tissue factor (F3) pre-mRNA in endothelial cells (By similarity).

#### Cellular Location

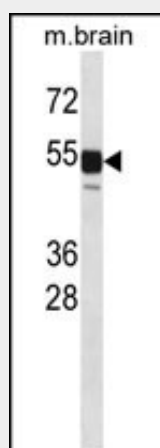
Nucleus

#### Mouse Clk1 Antibody (N-term) - Protocols

Provided below are standard protocols that you may find useful for product applications.

- [Western Blot](#)
- [Blocking Peptides](#)
- [Dot Blot](#)
- [Immunohistochemistry](#)
- [Immunofluorescence](#)
- [Immunoprecipitation](#)
- [Flow Cytometry](#)
- [Cell Culture](#)

#### Mouse Clk1 Antibody (N-term) - Images



Mouse Clk1 Antibody (N-term) (Cat. #AP14613a) western blot analysis in mouse brain tissue lysates (35ug/lane). This demonstrates the Clk1 antibody detected the Clk1 protein (arrow).

#### Mouse Clk1 Antibody (N-term) - Background

Phosphorylates serine- and arginine-rich (SR) proteins of the spliceosomal complex may be a constituent of a network of regulatory mechanisms that enable SR proteins to control RNA splicing. Phosphorylates serines, threonines and tyrosines.