

**Mouse Clk4 Antibody (N-term)**  
**Affinity Purified Rabbit Polyclonal Antibody (Pab)**  
**Catalog # AP14615a**

**Specification**

---

**Mouse Clk4 Antibody (N-term) - Product Information**

Application	WB,E
Primary Accession	<a href="#">O35493</a>
Other Accession	<a href="#">NP_031740.1</a>
Reactivity	Mouse
Host	Rabbit
Clonality	Polyclonal
Isotype	Rabbit IgG
Calculated MW	57345
Antigen Region	49-77

**Mouse Clk4 Antibody (N-term) - Additional Information**

**Gene ID** 12750

**Other Names**

Dual specificity protein kinase CLK4, CDC-like kinase 4, Clk4

**Target/Specificity**

This Mouse Clk4 antibody is generated from rabbits immunized with a KLH conjugated synthetic peptide between 49-77 amino acids from the N-terminal region of mouse Clk4.

**Dilution**

WB~~1:1000

**Format**

Purified polyclonal antibody supplied in PBS with 0.09% (W/V) sodium azide. This antibody is purified through a protein A column, followed by peptide affinity purification.

**Storage**

Maintain refrigerated at 2-8°C for up to 2 weeks. For long term storage store at -20°C in small aliquots to prevent freeze-thaw cycles.

**Precautions**

Mouse Clk4 Antibody (N-term) is for research use only and not for use in diagnostic or therapeutic procedures.

**Mouse Clk4 Antibody (N-term) - Protein Information**

**Name** Clk4

**Function** Dual specificity kinase acting on both serine/threonine and tyrosine-containing substrates. Phosphorylates serine- and arginine- rich (SR) proteins of the spliceosomal complex

and may be a constituent of a network of regulatory mechanisms that enable SR proteins to control RNA splicing. Phosphorylates SRSF1 and SRSF3. Required for the regulation of alternative splicing of MAPT/TAU. Regulates the alternative splicing of tissue factor (F3) pre-mRNA in endothelial cells.

**Cellular Location**

Nucleus.

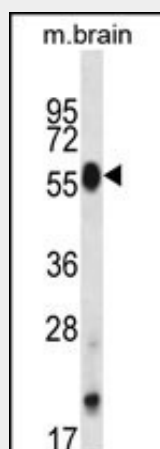
**Tissue Location**

Expressed in the hippocampus, the cerebellum and the olfactory bulb.

**Mouse Clk4 Antibody (N-term) - Protocols**

Provided below are standard protocols that you may find useful for product applications.

- [Western Blot](#)
- [Blocking Peptides](#)
- [Dot Blot](#)
- [Immunohistochemistry](#)
- [Immunofluorescence](#)
- [Immunoprecipitation](#)
- [Flow Cytometry](#)
- [Cell Culture](#)

**Mouse Clk4 Antibody (N-term) - Images**

Mouse Clk4 Antibody (N-term) (Cat. #AP14615a) western blot analysis in mouse brain tissue lysates (35ug/lane). This demonstrates the Clk4 antibody detected the Clk4 protein (arrow).

**Mouse Clk4 Antibody (N-term) - Background**

Phosphorylates serine- and arginine-rich (SR) proteins of the spliceosomal complex may be a constituent of a network of regulatory mechanisms that enable SR proteins to control RNA splicing. Phosphorylates serines, threonines and tyrosines. Required for the regulation of alternative splicing of MAPT/TAU.

**Mouse Clk4 Antibody (N-term) - References**

Katsu, R., et al. J. Biol. Chem. 277(46):44220-44228(2002)  
Hartmann, A.M., et al. Mol. Cell. Neurosci. 18(1):80-90(2001)

Watkins-Chow, D.E., et al. Genomics 45(1):147-157(1997)  
Nayler, O., et al. Biochem. J. 326 (PT 3), 693-700 (1997) :