

Mouse Epha1 Antibody (Center)
Affinity Purified Rabbit Polyclonal Antibody (Pab)
Catalog # AP14618C**Specification**

Mouse Epha1 Antibody (Center) - Product Information

Application	WB,E
Primary Accession	Q60750
Other Accession	NP_076069.2
Reactivity	Mouse
Host	Rabbit
Clonality	Polyclonal
Isotype	Rabbit IgG
Calculated MW	108578
Antigen Region	339-366

Mouse Epha1 Antibody (Center) - Additional Information**Gene ID** 13835**Other Names**

Ephrin type-A receptor 1, mEpha1, Embryonic stem cell kinase, Tyrosine-protein kinase receptor ESK, Epha1, Esk

Target/Specificity

This Mouse Epha1 antibody is generated from rabbits immunized with a KLH conjugated synthetic peptide between 339-366 amino acids from the Central region of mouse Epha1.

Dilution

WB~~1:1000

E~~Use at an assay dependent concentration.

Format

Purified polyclonal antibody supplied in PBS with 0.09% (W/V) sodium azide. This antibody is purified through a protein A column, followed by peptide affinity purification.

Storage

Maintain refrigerated at 2-8°C for up to 2 weeks. For long term storage store at -20°C in small aliquots to prevent freeze-thaw cycles.

Precautions

Mouse Epha1 Antibody (Center) is for research use only and not for use in diagnostic or therapeutic procedures.

Mouse Epha1 Antibody (Center) - Protein Information**Name** Epha1

Synonyms Esk

Function Receptor tyrosine kinase which binds promiscuously membrane- bound ephrin-A family ligands residing on adjacent cells, leading to contact-dependent bidirectional signaling into neighboring cells. The signaling pathway downstream of the receptor is referred to as forward signaling while the signaling pathway downstream of the ephrin ligand is referred to as reverse signaling. Binds with a low affinity EFNA3 and EFNA4 and with a high affinity to EFNA1 which most probably constitutes its cognate/functional ligand. Upon activation by EFNA1 induces cell attachment to the extracellular matrix inhibiting cell spreading and motility through regulation of ILK and downstream RHOA and RAC. Also plays a role in angiogenesis and regulates cell proliferation. May play a role in apoptosis.

Cellular Location

Cell membrane; Single-pass type I membrane protein

Tissue Location

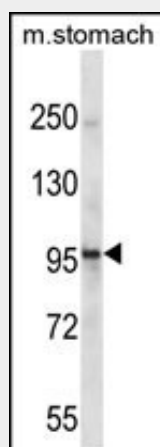
Preferentially expressed in epithelial cells including skin, kidney, liver and thymus (PubMed:11519828, PubMed:18802966). Expressed in myogenic progenitor cells (PubMed:27446912).

Mouse Epha1 Antibody (Center) - Protocols

Provided below are standard protocols that you may find useful for product applications.

- [Western Blot](#)
- [Blocking Peptides](#)
- [Dot Blot](#)
- [Immunohistochemistry](#)
- [Immunofluorescence](#)
- [Immunoprecipitation](#)
- [Flow Cytometry](#)
- [Cell Culture](#)

Mouse Epha1 Antibody (Center) - Images



Mouse Epha1 Antibody (Center) (Cat. #AP14618c) western blot analysis in mouse stomach tissue lysates (35ug/lane). This demonstrates the Epha1 antibody detected the Epha1 protein (arrow).

Mouse Epha1 Antibody (Center) - Background

Receptor for members of the ephrin-A family. Binds with a low affinity to ephrin-A1.

Mouse EphA1 Antibody (Center) - References

Islam, S., et al. Dig. Dis. Sci. 55(9):2478-2488(2010)
Zirzow, S., et al. Dev. Biol. 336(2):145-155(2009)
North, H.A., et al. Development 136(14):2467-2476(2009)
Abdul-Aziz, N.M., et al. Int. J. Dev. Biol. 53(4):559-568(2009)
Duffy, S.L., et al. Genesis 46(10):553-561(2008)