

Mouse Map3k1 Antibody (C-term)
Affinity Purified Rabbit Polyclonal Antibody (Pab)
Catalog # AP14625B**Specification**

Mouse Map3k1 Antibody (C-term) - Product Information

Application	WB, IHC-P,E
Primary Accession	P53349
Other Accession	Q13233
Reactivity	Mouse
Predicted	Human
Host	Rabbit
Clonality	Polyclonal
Isotype	Rabbit IgG
Calculated MW	161289
Antigen Region	1194-1221

Mouse Map3k1 Antibody (C-term) - Additional Information**Other Names**

Mitogen-activated protein kinase kinase kinase 1, MAPK/ERK kinase kinase 1, MEK kinase 1, MEKK 1, Map3k1, Mekk, Mekk1

Target/Specificity

This Mouse Map3k1 antibody is generated from rabbits immunized with a KLH conjugated synthetic peptide between 1194-1221 amino acids from the C-terminal region of mouse Map3k1.

Dilution

WB~~1:1000

IHC-P~~1:10~50

E~~Use at an assay dependent concentration.

Format

Purified polyclonal antibody supplied in PBS with 0.09% (W/V) sodium azide. This antibody is purified through a protein A column, followed by peptide affinity purification.

Storage

Maintain refrigerated at 2-8°C for up to 2 weeks. For long term storage store at -20°C in small aliquots to prevent freeze-thaw cycles.

Precautions

Mouse Map3k1 Antibody (C-term) is for research use only and not for use in diagnostic or therapeutic procedures.

Mouse Map3k1 Antibody (C-term) - Protein Information

Name Map3k1

Synonyms Mekk, Mekk1

Function Component of a protein kinase signal transduction cascade (PubMed:[14500727](#)). Activates the ERK and JNK kinase pathways by phosphorylation of MAP2K1 and MAP2K4 (PubMed:[14500727](#)). May phosphorylate the MAPK8/JNK1 kinase (PubMed:[17761173](#)). Activates CHUK and IKBKB, the central protein kinases of the NF-kappa-B pathway (PubMed:[14500727](#)).

Tissue Location

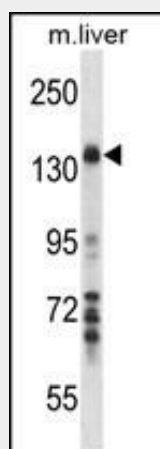
Highly expressed in the heart and spleen while a lower level expression is seen in the liver

Mouse Map3k1 Antibody (C-term) - Protocols

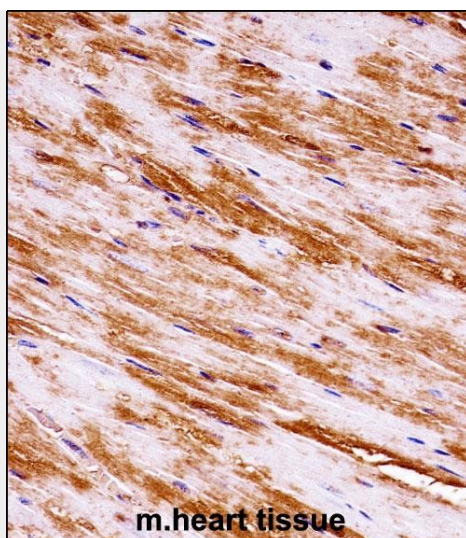
Provided below are standard protocols that you may find useful for product applications.

- [Western Blot](#)
- [Blocking Peptides](#)
- [Dot Blot](#)
- [Immunohistochemistry](#)
- [Immunofluorescence](#)
- [Immunoprecipitation](#)
- [Flow Cytometry](#)
- [Cell Culture](#)

Mouse Map3k1 Antibody (C-term) - Images



Mouse Map3k1 Antibody (C-term) (Cat. #AP14625b) western blot analysis in mouse liver tissue lysates (35ug/lane). This demonstrates the Map3k1 antibody detected the Map3k1 protein (arrow).



Mouse Map3k1 Antibody (C-term) (AP14625b) immunohistochemistry analysis in formalin fixed and paraffin embedded m.heart tissue followed by peroxidase conjugation of the secondary antibody and DAB staining. This data demonstrates the use of Mouse Map3k1 Antibody (C-term) for immunohistochemistry. Clinical relevance has not been evaluated.

Mouse Map3k1 Antibody (C-term) - Background

Component of a protein kinase signal transduction cascade. Activates the ERK and JNK kinase pathways by phosphorylation of MAP2K1 and MAP2K4. Activates CHUK and IKBKB, the central protein kinases of the NF-kappa-B pathway.