

**Mouse Ksr2 Antibody (C-term)**  
**Affinity Purified Rabbit Polyclonal Antibody (Pab)**  
**Catalog # AP14634b**

## Specification

---

### Mouse Ksr2 Antibody (C-term) - Product Information

Application	WB,E
Primary Accession	<a href="#">Q3UVC0</a>
Other Accession	<a href="#">NP_001030045.1</a>
Reactivity	Human
Host	Rabbit
Clonality	Polyclonal
Isotype	Rabbit IgG
Calculated MW	107655
Antigen Region	808-836

### Mouse Ksr2 Antibody (C-term) - Additional Information

**Gene ID** 333050

#### Other Names

Kinase suppressor of Ras 2, Ksr2 {ECO:0000312|MGI:MGI:3610315}

#### Target/Specificity

This Mouse Ksr2 antibody is generated from rabbits immunized with a KLH conjugated synthetic peptide between 808-836 amino acids from the C-terminal region of mouse Ksr2.

#### Dilution

WB~~1:1000

E~~Use at an assay dependent concentration.

#### Format

Purified polyclonal antibody supplied in PBS with 0.09% (W/V) sodium azide. This antibody is purified through a protein A column, followed by peptide affinity purification.

#### Storage

Maintain refrigerated at 2-8°C for up to 2 weeks. For long term storage store at -20°C in small aliquots to prevent freeze-thaw cycles.

#### Precautions

Mouse Ksr2 Antibody (C-term) is for research use only and not for use in diagnostic or therapeutic procedures.

### Mouse Ksr2 Antibody (C-term) - Protein Information

**Name** Ksr2 {ECO:0000312|MGI:MGI:3610315}

**Function** Location-regulated scaffold connecting MEK to RAF. Has very low protein kinase activity

and can phosphorylate MAP2K1 at several Ser and Thr residues with very low efficiency (in vitro). Acts as MAP2K1/MEK1-dependent allosteric activator of BRAF; upon binding to MAP2K1/MEK1, dimerizes with BRAF and promotes BRAF-mediated phosphorylation of MAP2K1/MEK1. Interaction with BRAF enhances KSR2-mediated phosphorylation of MAP2K1 (in vitro). Blocks MAP3K8 kinase activity and MAP3K8-mediated signaling. Acts as a negative regulator of MAP3K3-mediated activation of ERK, JNK and NF-kappa-B pathways, inhibiting MAP3K3-mediated interleukin-8 production.

#### Cellular Location

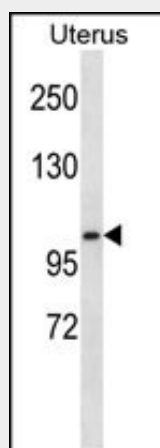
Cytoplasm {ECO:0000250|UniProtKB:Q61097}. Membrane {ECO:0000250|UniProtKB:Q61097}; Peripheral membrane protein {ECO:0000250|UniProtKB:Q61097}

### Mouse Ksr2 Antibody (C-term) - Protocols

Provided below are standard protocols that you may find useful for product applications.

- [Western Blot](#)
- [Blocking Peptides](#)
- [Dot Blot](#)
- [Immunohistochemistry](#)
- [Immunofluorescence](#)
- [Immunoprecipitation](#)
- [Flow Cytometry](#)
- [Cell Culture](#)

### Mouse Ksr2 Antibody (C-term) - Images



Mouse Ksr2 Antibody (C-term) (Cat. #AP14634b) western blot analysis in human normal Uterus tissue lysates (35ug/lane). This demonstrates the Ksr2 antibody detected the Ksr2 protein (arrow).

### Mouse Ksr2 Antibody (C-term) - Background

Location-regulated scaffold connecting MEK to RAF. Blocks MAP3K8 kinase activity and MAP3K8-mediated signaling. Acts as a negative regulator of MAP3K3-mediated activation of ERK, JNK and NF-kappa-B pathways, inhibiting MAP3K3-mediated interleukin-8 production (By similarity).

### Mouse Ksr2 Antibody (C-term) - References

Costanzo-Garvey, D.L., et al. Cell Metab. 10(5):366-378(2009) Dougherty, M.K., et al. Mol. Cell 34(6):652-662(2009)