

**Mouse Sgk223 Antibody (N-term)**  
**Affinity Purified Rabbit Polyclonal Antibody (Pab)**  
**Catalog # AP14635a**

**Specification**

---

**Mouse Sgk223 Antibody (N-term) - Product Information**

Application	WB,E
Primary Accession	<a href="#">Q57114</a>
Other Accession	<a href="#">NP_766499.2</a>
Reactivity	Mouse
Host	Rabbit
Clonality	Polyclonal
Isotype	Rabbit IgG
Calculated MW	147945
Antigen Region	195-224

**Mouse Sgk223 Antibody (N-term) - Additional Information**

**Gene ID** 244418

**Other Names**

Tyrosine-protein kinase SgK223, Sugen kinase 223, Sgk223, D8Ertd82e

**Target/Specificity**

This Mouse Sgk223 antibody is generated from rabbits immunized with a KLH conjugated synthetic peptide between 195-224 amino acids from the N-terminal region of mouse Sgk223.

**Dilution**

WB~~1:1000

E~~Use at an assay dependent concentration.

**Format**

Purified polyclonal antibody supplied in PBS with 0.09% (W/V) sodium azide. This antibody is purified through a protein A column, followed by peptide affinity purification.

**Storage**

Maintain refrigerated at 2-8°C for up to 2 weeks. For long term storage store at -20°C in small aliquots to prevent freeze-thaw cycles.

**Precautions**

Mouse Sgk223 Antibody (N-term) is for research use only and not for use in diagnostic or therapeutic procedures.

**Mouse Sgk223 Antibody (N-term) - Protein Information**

**Name** Prag1 {ECO:0000312|MGI:MGI:1196223}

**Function** Catalytically inactive protein kinase that acts as a scaffold protein (By similarity).

Functions as an effector of the small GTPase RND2, which stimulates RhoA activity and inhibits NGF-induced neurite outgrowth (By similarity). Promotes Src family kinase (SFK) signaling by regulating the subcellular localization of CSK, a negative regulator of these kinases, leading to the regulation of cell morphology and motility by a CSK-dependent mechanism (By similarity). Acts as a critical coactivator of Notch signaling (PubMed:[25038227](#)).

#### Cellular Location

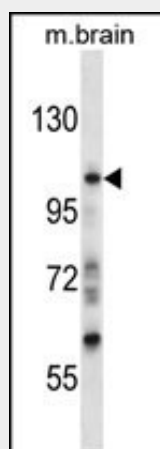
Cytoplasm {ECO:0000250|UniProtKB:D3ZMK9}. Nucleus. Cell junction, focal adhesion {ECO:0000250|UniProtKB:Q86YV5}. Note=Colocalized with NOTCH1 in the nucleus (PubMed:25038227)

### Mouse Sgk223 Antibody (N-term) - Protocols

Provided below are standard protocols that you may find useful for product applications.

- [Western Blot](#)
- [Blocking Peptides](#)
- [Dot Blot](#)
- [Immunohistochemistry](#)
- [Immunofluorescence](#)
- [Immunoprecipitation](#)
- [Flow Cytometry](#)
- [Cell Culture](#)

### Mouse Sgk223 Antibody (N-term) - Images



Mouse Sgk223 Antibody (N-term) (Cat. #AP14635a) western blot analysis in mouse brain tissue lysates (35ug/lane). This demonstrates the Sgk223 antibody detected the Sgk223 protein (arrow).

### Mouse Sgk223 Antibody (N-term) - Background

PRAGMIN is also known as SGK223 (sugen kinase 223). The rat homolog was originally identified in a yeast two-hybrid screen for Rnd2 effector proteins expressed in neural cells. Rat Pragmin was found to stimulate RhoA activity for the regulation of neurite outgrowth.

### Mouse Sgk223 Antibody (N-term) - References

Tanaka, H., et al. J. Biol. Chem. 281(15):10355-10364(2006)