

**Mouse Stk10 Antibody (C-term)**  
**Affinity Purified Rabbit Polyclonal Antibody (Pab)**  
**Catalog # AP14636b**

## Specification

---

### Mouse Stk10 Antibody (C-term) - Product Information

Application	WB,E
Primary Accession	<a href="#">O55098</a>
Reactivity	Mouse
Host	Rabbit
Clonality	Polyclonal
Isotype	Rabbit IgG
Calculated MW	111906
Antigen Region	668-696

### Mouse Stk10 Antibody (C-term) - Additional Information

**Gene ID** 20868

#### Other Names

Serine/threonine-protein kinase 10, Lymphocyte-oriented kinase, Stk10, Lok

#### Target/Specificity

This Mouse Stk10 antibody is generated from rabbits immunized with a KLH conjugated synthetic peptide between 668-696 amino acids from the C-terminal region of mouse Stk10.

#### Dilution

WB~~1:1000

E~~Use at an assay dependent concentration.

#### Format

Purified polyclonal antibody supplied in PBS with 0.09% (W/V) sodium azide. This antibody is purified through a protein A column, followed by peptide affinity purification.

#### Storage

Maintain refrigerated at 2-8°C for up to 2 weeks. For long term storage store at -20°C in small aliquots to prevent freeze-thaw cycles.

#### Precautions

Mouse Stk10 Antibody (C-term) is for research use only and not for use in diagnostic or therapeutic procedures.

### Mouse Stk10 Antibody (C-term) - Protein Information

**Name** Stk10

**Synonyms** Lok

**Function** Serine/threonine-protein kinase involved in regulation of lymphocyte migration. Phosphorylates MSN, and possibly PLK1. Involved in regulation of lymphocyte migration by mediating phosphorylation of ERM proteins such as MSN. Acts as a negative regulator of MAP3K1/MEKK1. May also act as a cell cycle regulator by acting as a polo kinase kinase: mediates phosphorylation of PLK1 in vitro; however such data require additional evidences in vivo.

**Cellular Location**

Cell membrane; Peripheral membrane protein

**Tissue Location**

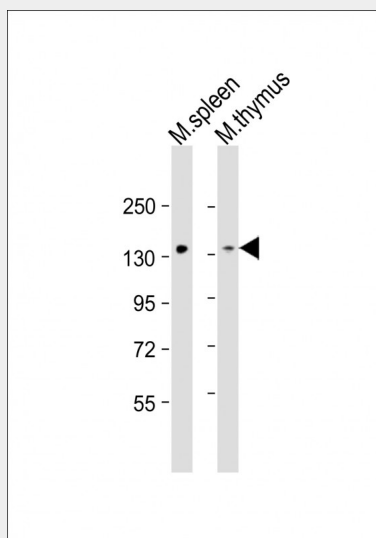
Expressed predominantly in lymphoid organs such as spleen, thymus, and bone marrow

**Mouse Stk10 Antibody (C-term) - Protocols**

Provided below are standard protocols that you may find useful for product applications.

- [Western Blot](#)
- [Blocking Peptides](#)
- [Dot Blot](#)
- [Immunohistochemistry](#)
- [Immunofluorescence](#)
- [Immunoprecipitation](#)
- [Flow Cytometry](#)
- [Cell Culture](#)

**Mouse Stk10 Antibody (C-term) - Images**



All lanes : Anti-Stk10 Antibody (C-term) at 1:1000 dilution Lane 1: mouse spleen lysate Lane 2: mouse thymus lysate Lysates/proteins at 20 µg per lane. Secondary Goat Anti-Rabbit IgG, (H+L), Peroxidase conjugated at 1/10000 dilution. Predicted band size : 112 kDa Blocking/Dilution buffer: 5% NFD/MTBST.

**Mouse Stk10 Antibody (C-term) - Background**

Stk10 can act on substrates such as myelin basic protein and histone 2A on serine and threonine residues.