

PDE8A Antibody (Center) (L572)
Purified Rabbit Polyclonal Antibody (Pab)
Catalog # AP1463c

Specification

PDE8A Antibody (Center) (L572) - Product Information

Application	IHC-P, WB,E
Primary Accession	O60658
Reactivity	Human
Host	Rabbit
Clonality	Polyclonal
Isotype	Rabbit IgG
Calculated MW	93304
Antigen Region	557-587

PDE8A Antibody (Center) (L572) - Additional Information

Gene ID 5151

Other Names

High affinity cAMP-specific and IBMX-insensitive 3', 5'-cyclic phosphodiesterase 8A, PDE8A

Target/Specificity

This PDE8A antibody is generated from rabbits immunized with a KLH conjugated synthetic peptide between 557-587 amino acids from the Central region of human PDE8A.

Dilution

IHC-P~~1:50

WB~~1:1000

E~~Use at an assay dependent concentration.

Format

Purified polyclonal antibody supplied in PBS with 0.09% (W/V) sodium azide. This antibody is prepared by Saturated Ammonium Sulfate (SAS) precipitation followed by dialysis against PBS.

Storage

Maintain refrigerated at 2-8°C for up to 2 weeks. For long term storage store at -20°C in small aliquots to prevent freeze-thaw cycles.

Precautions

PDE8A Antibody (Center) (L572) is for research use only and not for use in diagnostic or therapeutic procedures.

PDE8A Antibody (Center) (L572) - Protein Information

Name PDE8A

Function Hydrolyzes the second messenger cAMP, which is a key regulator of many important

physiological processes (PubMed:[18983167](#)). May be involved in maintaining basal levels of the cyclic nucleotide and/or in the cAMP regulation of germ cell development (PubMed:[18983167](#)). Binding to RAF1 reduces RAF1 'Ser-259' inhibitory- phosphorylation and stimulates RAF1-dependent EGF-activated ERK- signaling (PubMed:[23509299](#)). Protects against cell death induced by hydrogen peroxide and staurosporine (PubMed:[23509299](#)).

Tissue Location

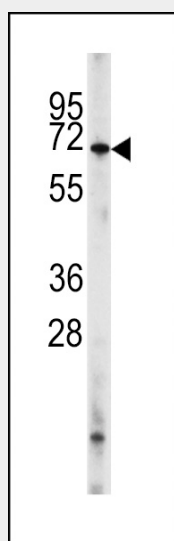
Expressed in most tissues except thymus and peripheral blood leukocytes. Highest levels in testis, ovary, small intestine and colon

PDE8A Antibody (Center) (L572) - Protocols

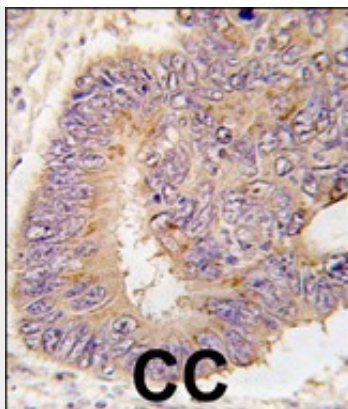
Provided below are standard protocols that you may find useful for product applications.

- [Western Blot](#)
- [Blocking Peptides](#)
- [Dot Blot](#)
- [Immunohistochemistry](#)
- [Immunofluorescence](#)
- [Immunoprecipitation](#)
- [Flow Cytometry](#)
- [Cell Culture](#)

PDE8A Antibody (Center) (L572) - Images



Western blot analysis of PDE8A Antibody (Center) (L572) (Cat# AP1463c) in HL60 cell line lysates (35ug/lane). PDE8A (arrow) was detected using the purified Pab.



Formalin-fixed and paraffin-embedded human colon carcinoma tissue reacted with PDE8A antibody (Center) (L572)(Cat.#AP1463c), which was peroxidase-conjugated to the secondary antibody, followed by DAB staining. This data demonstrates the use of this antibody for immunohistochemistry; clinical relevance has not been evaluated.

PDE8A Antibody (Center) (L572) - Background

PDE8A plays a role in signal transduction by regulating the intracellular concentration of cyclic nucleotides. This phosphodiesterase, which has a high affinity for cAMP, may be involved in maintaining basal levels of the cyclic nucleotide and/or in the cAMP regulation of germ cell development.

PDE8A Antibody (Center) (L572) - References

Wu,P., Proc. Natl. Acad. Sci. U.S.A. 101 (51), 17634-17639 (2004)
Gamanuma,M., Cell. Signal. 15 (6), 565-574 (2003)