

NCL Antibody (Center P291)
Affinity Purified Rabbit Polyclonal Antibody (Pab)
Catalog # AP14641C

Specification

NCL Antibody (Center P291) - Product Information

Application	IF, WB,E
Primary Accession	P19338
Other Accession	Q4R4J7 , NP_005372.2
Reactivity	Human
Predicted	Monkey
Host	Rabbit
Clonality	Polyclonal
Isotype	Rabbit IgG
Calculated MW	76614
Antigen Region	276-304

NCL Antibody (Center P291) - Additional Information

Gene ID 4691

Other Names

Nucleolin, Protein C23, NCL

Target/Specificity

This NCL antibody is generated from rabbits immunized with a KLH conjugated synthetic peptide between 276-304 amino acids from the Central region of human NCL.

Dilution

IF~~1:10~50

WB~~1:1000

E~~Use at an assay dependent concentration.

Format

Purified polyclonal antibody supplied in PBS with 0.09% (W/V) sodium azide. This antibody is purified through a protein A column, followed by peptide affinity purification.

Storage

Maintain refrigerated at 2-8°C for up to 2 weeks. For long term storage store at -20°C in small aliquots to prevent freeze-thaw cycles.

Precautions

NCL Antibody (Center P291) is for research use only and not for use in diagnostic or therapeutic procedures.

NCL Antibody (Center P291) - Protein Information

Name NCL

Function Nucleolin is the major nucleolar protein of growing eukaryotic cells. It is found associated with intranucleolar chromatin and pre-ribosomal particles. It induces chromatin decondensation by binding to histone H1. It is thought to play a role in pre-rRNA transcription and ribosome assembly. May play a role in the process of transcriptional elongation. Binds RNA oligonucleotides with 5'-UUAGGG- 3' repeats more tightly than the telomeric single-stranded DNA 5'- TTAGGG-3' repeats.

Cellular Location

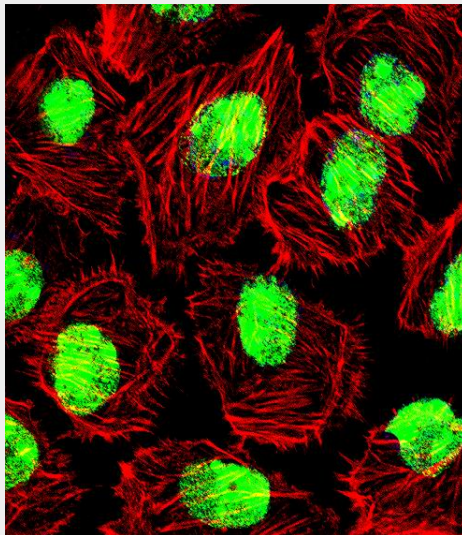
Nucleus, nucleolus. Cytoplasm. Note=Localized in cytoplasmic mRNP granules containing untranslated mRNAs

NCL Antibody (Center P291) - Protocols

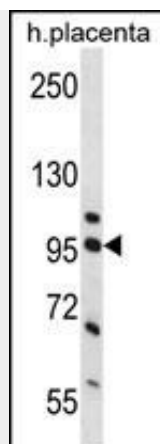
Provided below are standard protocols that you may find useful for product applications.

- [Western Blot](#)
- [Blocking Peptides](#)
- [Dot Blot](#)
- [Immunohistochemistry](#)
- [Immunofluorescence](#)
- [Immunoprecipitation](#)
- [Flow Cytometry](#)
- [Cell Culture](#)

NCL Antibody (Center P291) - Images



Fluorescent confocal image of U251 cell stained with NCL Antibody (Center P291)(Cat#AP14641c).U251 cells were fixed with 4% PFA (20 min), permeabilized with Triton X-100 (0.1%, 10 min), then incubated with NCL primary antibody (1:25, 1 h at 37°C). For secondary antibody, Alexa Fluor® 488 conjugated donkey anti-rabbit antibody (green) was used (1:400, 50 min at 37°C).Cytoplasmic actin was counterstained with Alexa Fluor® 555 (red) conjugated Phalloidin (7units/ml, 1 h at 37°C). Nuclei were counterstained with DAPI (blue) (10 µg/ml, 10 min). NCL immunoreactivity is localized to Nucleus significantly.



NCL Antibody (Center P291) (Cat. #AP14641c) western blot analysis in human placenta tissue lysates (35ug/lane). This demonstrates the NCL antibody detected the NCL protein (arrow).

NCL Antibody (Center P291) - Background

Nucleolin (NCL), a eukaryotic nucleolar phosphoprotein, is involved in the synthesis and maturation of ribosomes. It is located mainly in dense fibrillar regions of the nucleolus. Human NCL gene consists of 14 exons with 13 introns and spans approximately 11kb. The intron 11 of the NCL gene encodes a small nucleolar RNA, termed U20.

NCL Antibody (Center P291) - References

Ishimaru, D., et al. J. Biol. Chem. 285(35):27182-27191(2010)
Tulchin, N., et al. Am. J. Pathol. 176(3):1203-1214(2010)
Strang, B.L., et al. J. Virol. 84(4):1771-1784(2010)
Bertrand, L., et al. J. Virol. 84(1):109-118(2010)
Jerke, U., et al. PLoS ONE 4 (12), E8302 (2009) :