

TBC1D21 Antibody (N-term)
Affinity Purified Rabbit Polyclonal Antibody (Pab)
Catalog # AP14645A**Specification**

TBC1D21 Antibody (N-term) - Product Information

Application	WB,E
Primary Accession	Q8IYX1
Other Accession	NP_699187.1
Reactivity	Human
Host	Rabbit
Clonality	Polyclonal
Isotype	Rabbit IgG
Calculated MW	39221
Antigen Region	66-95

TBC1D21 Antibody (N-term) - Additional Information**Gene ID** 161514**Other Names**

TBC1 domain family member 21, TBC1D21

Target/Specificity

This TBC1D21 antibody is generated from rabbits immunized with a KLH conjugated synthetic peptide between 66-95 amino acids from the N-terminal region of human TBC1D21.

Dilution

WB~~1:1000

Format

Purified polyclonal antibody supplied in PBS with 0.09% (W/V) sodium azide. This antibody is purified through a protein A column, followed by peptide affinity purification.

Storage

Maintain refrigerated at 2-8°C for up to 2 weeks. For long term storage store at -20°C in small aliquots to prevent freeze-thaw cycles.

Precautions

TBC1D21 Antibody (N-term) is for research use only and not for use in diagnostic or therapeutic procedures.

TBC1D21 Antibody (N-term) - Protein Information**Name** TBC1D21**Synonyms** MGCRABGAP {ECO:0000303|PubMed:28067790}

Function Acts as a GTPase-activating protein for Rab family protein(s) (PubMed:[28067790](#), PubMed:[19077034](#)). Essential for the establishment of male fertility, and is required for both the production of normal sperm number and sperm function (By similarity). Plays an important role in the formation of intact mitochondria, outer dense fibers and axoneme within the sperm tail (By similarity). Essential for sperm mitochondrial sheath formation and for the interactions of ARMC12 with VDAC2 and VDAC3 (By similarity). May be involved in acrosome formation and cytoskeletal reorganization during spermiogenesis, possibly by regulating RAB3A activity (PubMed:[21128978](#)).

Cellular Location

Cytoplasmic vesicle, secretory vesicle, acrosome {ECO:0000250|UniProtKB:Q9D9D3}. Cytoplasm, cytoskeleton {ECO:0000250|UniProtKB:Q9D9D3}. Note=Located at the edge of the acrosomal region, neck and annulus during spermiogenesis. Colocalizes with RAB3A at the acrosome-acroplaxome and neck regions of spermatids Colocalizes with ACTB at the neck region in elongated spermatids {ECO:0000250|UniProtKB:Q9D9D3}

Tissue Location

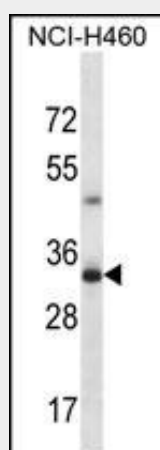
Expressed in round and elongated spermatids (at protein level). Expressed specifically in adult testis and very weakly in fetal brain.

TBC1D21 Antibody (N-term) - Protocols

Provided below are standard protocols that you may find useful for product applications.

- [Western Blot](#)
- [Blocking Peptides](#)
- [Dot Blot](#)
- [Immunohistochemistry](#)
- [Immunofluorescence](#)
- [Immunoprecipitation](#)
- [Flow Cytometry](#)
- [Cell Culture](#)

TBC1D21 Antibody (N-term) - Images



TBC1D21 Antibody (N-term) (Cat. #AP14645a) western blot analysis in NCI-H460 cell line lysates (35ug/lane). This demonstrates the TBC1D21 antibody detected the TBC1D21 protein (arrow).

TBC1D21 Antibody (N-term) - Background

TBC1D21 may act as a GTPase-activating protein for Rab family protein(s).

TBC1D21 Antibody (N-term) - References

Ishibashi, K., et al. Genes Cells 14(1):41-52(2009)