

CSDA Antibody (Center)
Affinity Purified Rabbit Polyclonal Antibody (Pab)
Catalog # AP14659c**Specification**

CSDA Antibody (Center) - Product Information

Application	WB,E
Primary Accession	P16989
Other Accession	Q62764 , Q9JKB3 , NP_001138898.1 , NP_003642.3
Reactivity	Human, Mouse
Predicted	Rat
Host	Rabbit
Clonality	Polyclonal
Isotype	Rabbit IgG
Antigen Region	152-181

CSDA Antibody (Center) - Additional Information**Gene ID** 8531**Other Names**

Y-box-binding protein 3, Cold shock domain-containing protein A, DNA-binding protein A, Single-strand DNA-binding protein NF-GMB, YBX3, CSDA, DBPA

Target/Specificity

This CSDA antibody is generated from rabbits immunized with a KLH conjugated synthetic peptide between 152-181 amino acids from the Central region of human CSDA.

Dilution

WB~~1:1000

E~~Use at an assay dependent concentration.

Format

Purified polyclonal antibody supplied in PBS with 0.09% (W/V) sodium azide. This antibody is purified through a protein A column, followed by peptide affinity purification.

Storage

Maintain refrigerated at 2-8°C for up to 2 weeks. For long term storage store at -20°C in small aliquots to prevent freeze-thaw cycles.

Precautions

CSDA Antibody (Center) is for research use only and not for use in diagnostic or therapeutic procedures.

CSDA Antibody (Center) - Protein Information**Name** YBX3

Synonyms CSDA, DBPA

Function Binds to the GM-CSF promoter. Seems to act as a repressor. Also binds to full-length mRNA and to short RNA sequences containing the consensus site 5'-UCCAUCA-3'. May have a role in translation repression (By similarity).

Cellular Location

Cytoplasm. Nucleus.

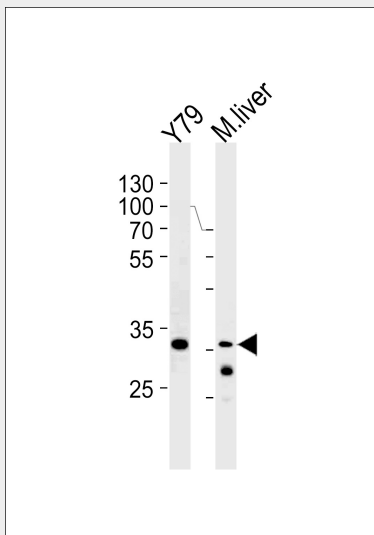
Tissue Location

Highly expressed in skeletal muscle and heart.

CSDA Antibody (Center) - Protocols

Provided below are standard protocols that you may find useful for product applications.

- [Western Blot](#)
- [Blocking Peptides](#)
- [Dot Blot](#)
- [Immunohistochemistry](#)
- [Immunofluorescence](#)
- [Immunoprecipitation](#)
- [Flow Cytometry](#)
- [Cell Culture](#)

CSDA Antibody (Center) - Images

CSDA Antibody (Center) (Cat.# AP14659c) western blot analysis in Y79 cell line and mouse liver lysates (35ug/lane). This demonstrates the CSDA antibody detected the CSDA protein (arrow).

CSDA Antibody (Center) - Background

CSDA binds to the GM-CSF promoter. Seems to act as a repressor. Binds also to full length mRNA and to short RNA sequences containing the consensus site 5'-UCCAUCA-3'. May have a role in translation repression (By similarity).

CSDA Antibody (Center) - References

Lima, W.R., et al. J. Am. Soc. Nephrol. 21(3):478-488(2010)
Wang, G.R., et al. Acta Pharmacol. Sin. 30(10):1436-1442(2009)
Sharpe Elles, L.M., et al. Nucleic Acids Res. 37(19):6503-6514(2009)
Buchert, M., et al. Gastroenterology 137(1):156-164(2009)
Hayashi, J., et al. Int. J. Oncol. 21(4):847-850(2002)