

Latexin Antibody (N-term)
Affinity Purified Rabbit Polyclonal Antibody (Pab)
Catalog # AP1467a

Specification

Latexin Antibody (N-term) - Product Information

Application	IHC-P, WB,E
Primary Accession	Q9BS40
Reactivity	Human
Host	Rabbit
Clonality	Polyclonal
Isotype	Rabbit IgG
Calculated MW	25750
Antigen Region	23-53

Latexin Antibody (N-term) - Additional Information

Gene ID 56925

Other Names

Latexin, Endogenous carboxypeptidase inhibitor, ECI, Protein MUM, Tissue carboxypeptidase inhibitor, TCI, LXN

Target/Specificity

This Latexin antibody is generated from rabbits immunized with a KLH conjugated synthetic peptide between 23-53 amino acids from the N-terminal region of human Latexin.

Dilution

IHC-P~~1:10~50

WB~~1:1000

E~~Use at an assay dependent concentration.

Format

Purified polyclonal antibody supplied in PBS with 0.09% (W/V) sodium azide. This antibody is purified through a protein A column, followed by peptide affinity purification.

Storage

Maintain refrigerated at 2-8°C for up to 2 weeks. For long term storage store at -20°C in small aliquots to prevent freeze-thaw cycles.

Precautions

Latexin Antibody (N-term) is for research use only and not for use in diagnostic or therapeutic procedures.

Latexin Antibody (N-term) - Protein Information

Name LXN

Function Hardly reversible, non-competitive, and potent inhibitor of CPA1, CPA2 and CPA4. May play a role in inflammation.

Cellular Location

Cytoplasm.

Tissue Location

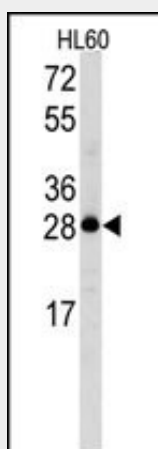
Highly expressed in heart, prostate, ovary, kidney, pancreas, and colon, moderate or low in other tissues including brain

Latexin Antibody (N-term) - Protocols

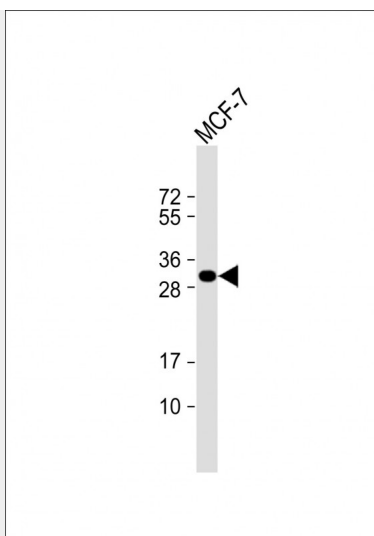
Provided below are standard protocols that you may find useful for product applications.

- [Western Blot](#)
- [Blocking Peptides](#)
- [Dot Blot](#)
- [Immunohistochemistry](#)
- [Immunofluorescence](#)
- [Immunoprecipitation](#)
- [Flow Cytometry](#)
- [Cell Culture](#)

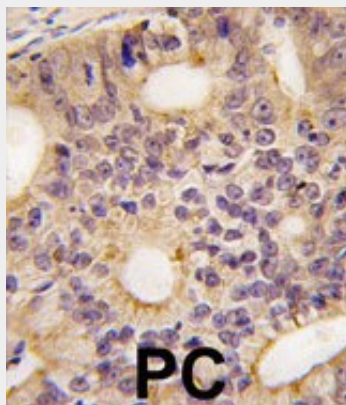
Latexin Antibody (N-term) - Images



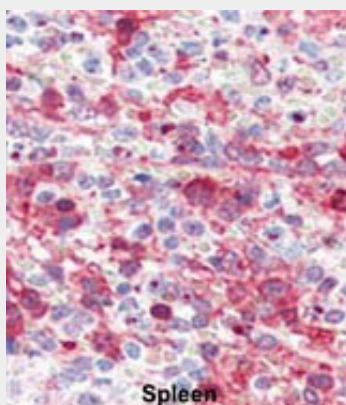
Western blot analysis of Latexin Antibody (N-term) (Cat.#AP1467a) in HL60 cell line lysates (35ug/lane). Latexin (arrow) was detected using the purified Pab.



Anti-Latexin Antibody (N-term) at 1:1000 dilution + MCF-7 whole cell lysate Lysates/proteins at 20 µg per lane. Secondary Goat Anti-Rabbit IgG, (H+L), Peroxidase conjugated at 1/10000 dilution. Predicted band size : 26 kDa Blocking/Dilution buffer: 5% NFDM/TBST.



Formalin-fixed and paraffin-embedded human prostata carcinoma tissue reacted with Latexin antibody (N-term), which was peroxidase-conjugated to the secondary antibody, followed by DAB staining. This data demonstrates the use of this antibody for immunohistochemistry; clinical relevance has not been evaluated.



Formalin-fixed and paraffin-embedded human Spleen tissue reacted with Latexin antibody (N-term)(Cat.#AP1467a), which was peroxidase-conjugated to the secondary antibody, followed by AEC staining. This data demonstrates the use of this antibody for immunohistochemistry; clinical relevance has not been evaluated.

Latexin Antibody (N-term) - Background

Latexin possesses nearly irreversible, non-competitive and potent inhibition of zinc-dependent metallopeptidases CPA1, CPA2, and CPA4. It is expressed in a neuronal subset in the cerebral cortex and cells in other neural and non-neural tissues of rat. Latexin plays a role in regional specification and/or morphogenesis of the forebrain.

Latexin Antibody (N-term) - References

Pallares, I., Proc. Natl. Acad. Sci. U.S.A. 102 (11), 3978-3983 (2005)