

**KLK9 Antibody (Center)**  
**Affinity Purified Rabbit Polyclonal Antibody (Pab)**  
**Catalog # AP14680C****Specification**

---

**KLK9 Antibody (Center) - Product Information**

Application	IHC-P, WB,E
Primary Accession	<a href="#">O9UKQ9</a>
Other Accession	<a href="#">NP_036447.1</a>
Reactivity	Human
Host	Rabbit
Clonality	Polyclonal
Isotype	Rabbit IgG
Calculated MW	27513
Antigen Region	82-111

**KLK9 Antibody (Center) - Additional Information****Gene ID** 284366**Other Names**

Kallikrein-9, 3421-, Kallikrein-like protein 3, KLK-L3, KLK9

**Target/Specificity**

This KLK9 antibody is generated from rabbits immunized with a KLH conjugated synthetic peptide between 82-111 amino acids from the Central region of human KLK9.

**Dilution**

IHC-P~~1:10~50

WB~~1:1000

E~~Use at an assay dependent concentration.

**Format**

Purified polyclonal antibody supplied in PBS with 0.09% (W/V) sodium azide. This antibody is purified through a protein A column, followed by peptide affinity purification.

**Storage**

Maintain refrigerated at 2-8°C for up to 2 weeks. For long term storage store at -20°C in small aliquots to prevent freeze-thaw cycles.

**Precautions**

KLK9 Antibody (Center) is for research use only and not for use in diagnostic or therapeutic procedures.

**KLK9 Antibody (Center) - Protein Information****Name** KLK9

**Cellular Location**

Secreted.

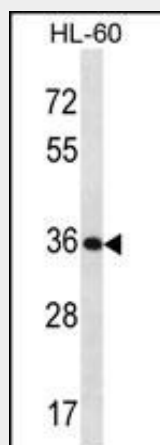
**Tissue Location**

Skin, thymus, trachea, cerebellum and spinal cord.

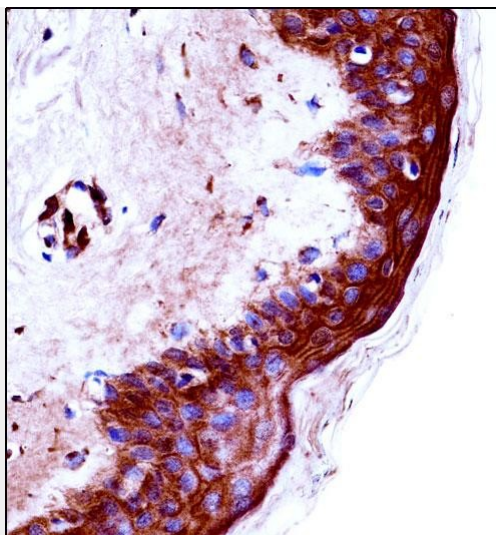
**KLK9 Antibody (Center) - Protocols**

Provided below are standard protocols that you may find useful for product applications.

- [Western Blot](#)
- [Blocking Peptides](#)
- [Dot Blot](#)
- [Immunohistochemistry](#)
- [Immunofluorescence](#)
- [Immunoprecipitation](#)
- [Flow Cytometry](#)
- [Cell Culture](#)

**KLK9 Antibody (Center) - Images**

KLK9 Antibody (Center) (Cat. #AP14680c) western blot analysis in HL-60 cell line lysates (35ug/lane). This demonstrates the KLK9 antibody detected the KLK9 protein (arrow).



KLK9 Antibody (Center) (AP14680c) immunohistochemistry analysis in formalin fixed and paraffin embedded human skin tissue followed by peroxidase conjugation of the secondary antibody and DAB staining. This data demonstrates the use of KLK9 Antibody (Center) for immunohistochemistry. Clinical relevance has not been evaluated.

#### **KLK9 Antibody (Center) - Background**

The protein encoded by this gene is a kallikrein-related serine protease. This gene is activated by steroid hormones in a human breast cancer cell line, making it a good marker for cancer detection. The encoded protein is found primarily in the cytoplasm.

#### **KLK9 Antibody (Center) - References**

Klein, R.J., et al. Cancer Prev Res (Phila) 3(5):611-619(2010)  
Lundwall, A., et al. Biol. Chem. 387(6):637-641(2006)  
Grimwood, J., et al. Nature 428(6982):529-535(2004)  
Yousef, G.M., et al. Cancer Res. 61(21):7811-7818(2001)  
Gan, L., et al. Gene 257(1):119-130(2000)