

TRA2B Antibody (Center)
Affinity Purified Rabbit Polyclonal Antibody (Pab)
Catalog # AP14688c**Specification**

TRA2B Antibody (Center) - Product Information

Application	IHC-P, WB,E
Primary Accession	P62995
Other Accession	P62997 , P62996 , Q3ZBT6 , NP_004584.1
Reactivity	Human
Predicted	Bovine, Mouse, Rat
Host	Rabbit
Clonality	Polyclonal
Isotype	Rabbit IgG
Calculated MW	33666
Antigen Region	208-237

TRA2B Antibody (Center) - Additional Information**Gene ID** 6434**Other Names**

Transformer-2 protein homolog beta, TRA-2 beta, TRA2-beta, hTRA2-beta, Splicing factor, arginine/serine-rich 10, Transformer-2 protein homolog B, TRA2B, SFRS10

Target/Specificity

This TRA2B antibody is generated from rabbits immunized with a KLH conjugated synthetic peptide between 208-237 amino acids from the Central region of human TRA2B.

Dilution

IHC-P~~1:10~50

WB~~1:1000

E~~Use at an assay dependent concentration.

Format

Purified polyclonal antibody supplied in PBS with 0.09% (W/V) sodium azide. This antibody is purified through a protein A column, followed by peptide affinity purification.

Storage

Maintain refrigerated at 2-8°C for up to 2 weeks. For long term storage store at -20°C in small aliquots to prevent freeze-thaw cycles.

Precautions

TRA2B Antibody (Center) is for research use only and not for use in diagnostic or therapeutic procedures.

TRA2B Antibody (Center) - Protein Information

Name TRA2B ([HGNC:10781](#))

Synonyms SFRS10

Function Sequence-specific RNA-binding protein which participates in the control of pre-mRNA splicing. Can either activate or suppress exon inclusion. Acts additively with RBMX to promote exon 7 inclusion of the survival motor neuron SMN2. Activates the splicing of MAPT/Tau exon 10. Alters pre-mRNA splicing patterns by antagonizing the effects of splicing regulators, like RBMX. Binds to the AG-rich SE2 domain in the SMN exon 7 RNA. Binds to pre-mRNA.

Cellular Location

Nucleus

Tissue Location

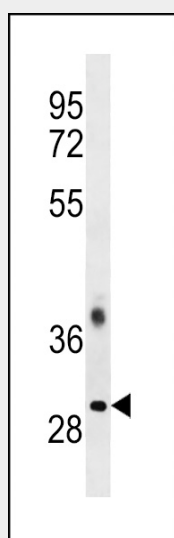
Highest expression in heart, skeletal muscle and pancreas. Less abundant in kidney, placenta and brain. Lowest expression in kidney and liver.

TRA2B Antibody (Center) - Protocols

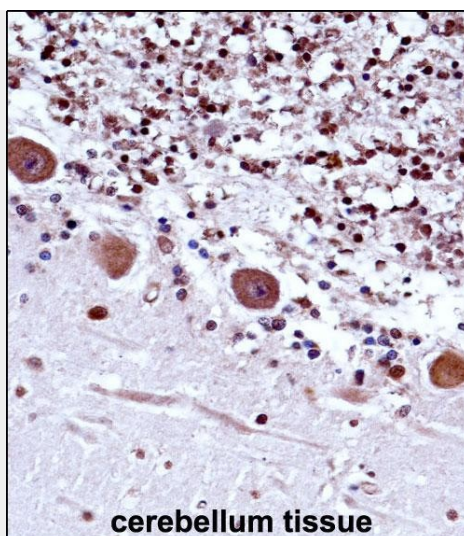
Provided below are standard protocols that you may find useful for product applications.

- [Western Blot](#)
- [Blocking Peptides](#)
- [Dot Blot](#)
- [Immunohistochemistry](#)
- [Immunofluorescence](#)
- [Immunoprecipitation](#)
- [Flow Cytometry](#)
- [Cell Culture](#)

TRA2B Antibody (Center) - Images



TRA2B Antibody (Center) (Cat. #AP14688c) western blot analysis in CEM cell line lysates (35ug/lane). This demonstrates the TRA2B antibody detected the TRA2B protein (arrow).



TRA2B Antibody (Center) (AP14688c) immunohistochemistry analysis in formalin fixed and paraffin embedded human cerebellum tissue followed by peroxidase conjugation of the secondary antibody and DAB staining. This data demonstrates the use of TRA2B Antibody (Center) for immunohistochemistry. Clinical relevance has not been evaluated.

TRA2B Antibody (Center) - Background

TRA2B is a sequence-specific RNA-binding protein which participates in the control of pre-mRNA splicing.

TRA2B Antibody (Center) - References

Benderska, N., et al. Biochim. Biophys. Acta 1799 (5-6), 448-453 (2010) :
Thorleifsson, G., et al. Nat. Genet. 41(1):18-24(2009)
Caporaso, N., et al. PLoS ONE 4 (2), E4653 (2009) :
Gabriel, B., et al. Acta Obstet Gynecol Scand 88(2):216-221(2009)
Miele, A., et al. J. Cell. Biochem. 102(1):136-148(2007)