

SDC3 Antibody (C-term)
Affinity Purified Rabbit Polyclonal Antibody (Pab)
Catalog # AP14689b

Specification

SDC3 Antibody (C-term) - Product Information

Application	WB,E
Primary Accession	O75056
Other Accession	P33671 , Q64519 , NP_055469.3
Reactivity	Human
Predicted	Mouse, Rat
Host	Rabbit
Clonality	Polyclonal
Isotype	Rabbit IgG
Calculated MW	45497
Antigen Region	413-442

SDC3 Antibody (C-term) - Additional Information

Gene ID 9672

Other Names

Syndecan-3, SYND3, SDC3, KIAA0468

Target/Specificity

This SDC3 antibody is generated from rabbits immunized with a KLH conjugated synthetic peptide between 413-442 amino acids from the C-terminal region of human SDC3.

Dilution

WB~~1:1000

E~~Use at an assay dependent concentration.

Format

Purified polyclonal antibody supplied in PBS with 0.09% (W/V) sodium azide. This antibody is purified through a protein A column, followed by peptide affinity purification.

Storage

Maintain refrigerated at 2-8°C for up to 2 weeks. For long term storage store at -20°C in small aliquots to prevent freeze-thaw cycles.

Precautions

SDC3 Antibody (C-term) is for research use only and not for use in diagnostic or therapeutic procedures.

SDC3 Antibody (C-term) - Protein Information

Name SDC3

Synonyms KIAA0468

Function Cell surface proteoglycan that may bear heparan sulfate (By similarity). May have a role in the organization of cell shape by affecting the actin cytoskeleton, possibly by transferring signals from the cell surface in a sugar-dependent mechanism.

Cellular Location

Cell membrane; Single-pass type I membrane protein

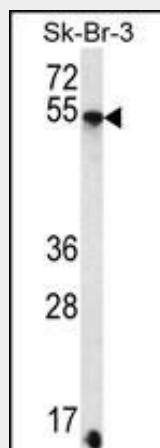
Tissue Location

Expressed in the nervous system, the adrenal gland, and the spleen.

SDC3 Antibody (C-term) - Protocols

Provided below are standard protocols that you may find useful for product applications.

- [Western Blot](#)
- [Blocking Peptides](#)
- [Dot Blot](#)
- [Immunohistochemistry](#)
- [Immunofluorescence](#)
- [Immunoprecipitation](#)
- [Flow Cytometry](#)
- [Cell Culture](#)

SDC3 Antibody (C-term) - Images

SDC3 Antibody (C-term) (Cat. #AP14689b) western blot analysis in SK-BR-3 cell line lysates (35ug/lane). This demonstrates the SDC3 antibody detected the SDC3 protein (arrow).

SDC3 Antibody (C-term) - Background

The protein encoded by this gene belongs to the syndecan proteoglycan family. It may play a role in the organization of cell shape by affecting the actin cytoskeleton, possibly by transferring signals from the cell surface in a sugar-dependent mechanism. Allelic variants of this gene have been associated with obesity.

SDC3 Antibody (C-term) - References

Schuring, A.N., et al. J. Mol. Med. 87(12):1241-1250(2009)
Marzioni, D., et al. Int J Immunopathol Pharmacol 22(3):627-638(2009)
Yao, J., et al. Dig. Dis. Sci. 54(4):895-901(2009)
Landgraf, P., et al. J. Biol. Chem. 283(36):25036-25045(2008)
Dews, I.C., et al. Proc. Natl. Acad. Sci. U.S.A. 104(52):20782-20787(2007)