

**Mouse Mos Antibody (C-term)**  
**Affinity Purified Rabbit Polyclonal Antibody (Pab)**  
**Catalog # AP14693b****Specification**

---

**Mouse Mos Antibody (C-term) - Product Information**

Application	WB,E
Primary Accession	<a href="#">P00536</a>
Other Accession	<a href="#">P00539</a>
Reactivity	Mouse
Predicted	Rat
Host	Rabbit
Clonality	Polyclonal
Isotype	Rabbit IgG
Calculated MW	37886
Antigen Region	301-329

**Mouse Mos Antibody (C-term) - Additional Information****Gene ID** 17451**Other Names**

Proto-oncogene serine/threonine-protein kinase mos, Oocyte maturation factor mos,  
Proto-oncogene c-Mos, Mos

**Target/Specificity**

This Mouse Mos antibody is generated from rabbits immunized with a KLH conjugated synthetic peptide between 301-329 amino acids from the C-terminal region of mouse Mos.

**Dilution**

WB~~1:1000

E~~Use at an assay dependent concentration.

**Format**

Purified polyclonal antibody supplied in PBS with 0.09% (W/V) sodium azide. This antibody is purified through a protein A column, followed by peptide affinity purification.

**Storage**

Maintain refrigerated at 2-8°C for up to 2 weeks. For long term storage store at -20°C in small aliquots to prevent freeze-thaw cycles.

**Precautions**

Mouse Mos Antibody (C-term) is for research use only and not for use in diagnostic or therapeutic procedures.

**Mouse Mos Antibody (C-term) - Protein Information****Name** Mos {ECO:0000312|MGI:MGI:97052}

**Function** Serine/threonine kinase involved in the regulation of MAPK signaling. Is an activator of the ERK1/2 signaling cascade playing an essential role in the stimulation of oocyte maturation.

**Cellular Location**

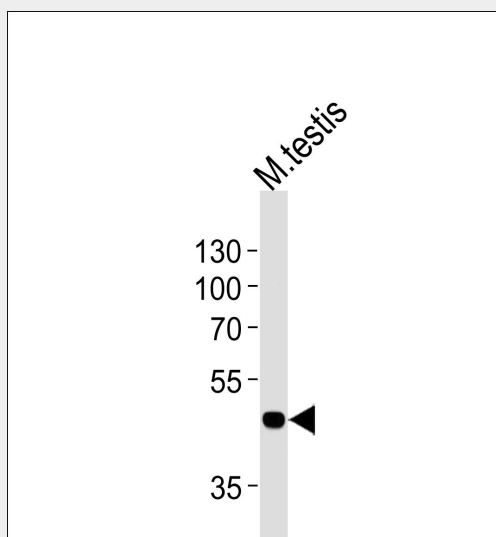
Cytoplasm {ECO:0000250|UniProtKB:P00540}.

**Mouse Mos Antibody (C-term) - Protocols**

Provided below are standard protocols that you may find useful for product applications.

- [Western Blot](#)
- [Blocking Peptides](#)
- [Dot Blot](#)
- [Immunohistochemistry](#)
- [Immunofluorescence](#)
- [Immunoprecipitation](#)
- [Flow Cytometry](#)
- [Cell Culture](#)

**Mouse Mos Antibody (C-term) - Images**



Western blot analysis of lysate from mouse testis tissue lysate, using Mouse Mos Antibody (C-term)(Cat. #AP14693b). AP14693b was diluted at 1:1000 at each lane. A goat anti-rabbit IgG H&L(HRP) at 1:5000 dilution was used as the secondary antibody. Lysate at 35ug per lane.

**Mouse Mos Antibody (C-term) - Background**

MOS is a proto oncogene (c-Mos) encoded protein serine/threonine kinase. MOS is a monomeric protein that indirectly activates MAP kinase (Erk1/2) by directly phosphorylating MAP kinase kinase (Mck, MAPKK, MKK). MOS is known as a cytostatic factor (CSF) and is also thought to arrest unfertilized amphibian and mammalian cells during M phase, thus regulating oocyte maturation. MOS is destroyed before fertilisation, after exit from meiosis II, making it a good marker for studies of eggs during oogenesis and maturation.