

**Mouse Gucy2f Antibody (Center)**  
**Affinity Purified Rabbit Polyclonal Antibody (Pab)**  
**Catalog # AP14715C****Specification**

---

**Mouse Gucy2f Antibody (Center) - Product Information**

Application	WB,E
Primary Accession	<a href="#">Q5SDA5</a>
Other Accession	<a href="#">NP_001007577.1</a>
Reactivity	Mouse
Host	Rabbit
Clonality	Polyclonal
Isotype	Rabbit IgG
Calculated MW	124425
Antigen Region	317-344

**Mouse Gucy2f Antibody (Center) - Additional Information****Gene ID** 245650**Other Names**

Retinal guanylyl cyclase 2, Gucy2f

**Target/Specificity**

This Mouse Gucy2f antibody is generated from rabbits immunized with a KLH conjugated synthetic peptide between 317-344 amino acids from the Central region of mouse Gucy2f.

**Dilution**

WB~~1:1000

**Format**

Purified polyclonal antibody supplied in PBS with 0.09% (W/V) sodium azide. This antibody is purified through a protein A column, followed by peptide affinity purification.

**Storage**

Maintain refrigerated at 2-8°C for up to 2 weeks. For long term storage store at -20°C in small aliquots to prevent freeze-thaw cycles.

**Precautions**

Mouse Gucy2f Antibody (Center) is for research use only and not for use in diagnostic or therapeutic procedures.

**Mouse Gucy2f Antibody (Center) - Protein Information****Name** Gucy2f {ECO:0000312|MGI:MGI:105119}**Function** Responsible for the synthesis of cyclic GMP (cGMP) in rods and cones of photoreceptors (By similarity). Plays an essential role in phototransduction, by mediating cGMP replenishment.

May also participate in the trafficking of membrane-associated proteins to the photoreceptor outer segment membrane (PubMed:[17255100](#)).

**Cellular Location**

Membrane {ECO:0000250|UniProtKB:P51842}; Single-pass type I membrane protein.  
Photoreceptor outer segment membrane; Single-pass type I membrane protein

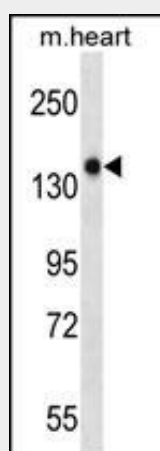
**Tissue Location**

Retina..

**Mouse Gucy2f Antibody (Center) - Protocols**

Provided below are standard protocols that you may find useful for product applications.

- [Western Blot](#)
- [Blocking Peptides](#)
- [Dot Blot](#)
- [Immunohistochemistry](#)
- [Immunofluorescence](#)
- [Immunoprecipitation](#)
- [Flow Cytometry](#)
- [Cell Culture](#)

**Mouse Gucy2f Antibody (Center) - Images**

Mouse Gucy2f Antibody (Center) (Cat. #AP14715c) western blot analysis in mouse heart tissue lysates (35ug/lane). This demonstrates the Gucy2f antibody detected the Gucy2f protein (arrow).

**Mouse Gucy2f Antibody (Center) - Background**

Probably plays a specific functional role in the rods and/or cones of photoreceptors. It may be the enzyme involved in the resynthesis of cGMP required for recovery of the dark state after phototransduction (By similarity).

**Mouse Gucy2f Antibody (Center) - References**

Schmidt, H., et al. J. Cell Biol. 179(2):331-340(2007)  
Baehr, W., et al. J. Biol. Chem. 282(12):8837-8847(2007)  
Corbo, J.C., et al. PLoS Genet. 1 (2), E11 (2005) :  
Shearstone, J.R., et al. Genomics 85(3):309-321(2005)

Yamazaki, K., et al. Genomics 51(2):303-305(1998)