

CATSPERTZ Antibody (C-term)
Affinity Purified Rabbit Polyclonal Antibody (Pab)
Catalog # AP14718b

Specification

CATSPERTZ Antibody (C-term) - Product Information

Application	WB,E
Primary Accession	O9NTU4
Other Accession	NP_001034585.1
Reactivity	Human
Host	Rabbit
Clonality	Polyclonal
Isotype	Rabbit IgG
Antigen Region	172-200

CATSPERTZ Antibody (C-term) - Additional Information

Gene ID 25858

Other Names

Testis-expressed sequence 40 protein, TEX40, C11orf20

Target/Specificity

This C11orf20 antibody is generated from rabbits immunized with a KLH conjugated synthetic peptide between 172-200 amino acids from the C-terminal region of human C11orf20.

Dilution

WB~~1:1000

E~~Use at an assay dependent concentration.

Format

Purified polyclonal antibody supplied in PBS with 0.09% (W/V) sodium azide. This antibody is purified through a protein A column, followed by peptide affinity purification.

Storage

Maintain refrigerated at 2-8°C for up to 2 weeks. For long term storage store at -20°C in small aliquots to prevent freeze-thaw cycles.

Precautions

CATSPERTZ Antibody (C-term) is for research use only and not for use in diagnostic or therapeutic procedures.

CATSPERTZ Antibody (C-term) - Protein Information

Name CATSPERZ ([HGNC:19231](#))

Function Auxiliary component of the CatSper complex, a complex involved in sperm cell hyperactivation. Sperm cell hyperactivation is needed for sperm motility which is essential late in

the preparation of sperm for fertilization. Required for a distribution of the CatSper complex in linear quadrilateral nanodomains along the flagellum, maximizing fertilization inside the mammalian female reproductive tract. Together with EFCAB9, associates with the CatSper channel pore and is required for the two-row structure of each single CatSper channel.

Cellular Location

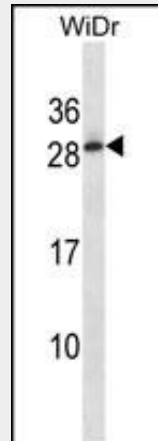
Cell projection, cilium, flagellum membrane; Peripheral membrane protein. Note=Specifically located in the principal piece of sperm tail (PubMed:28226241). Although it does not contain a transmembrane domain, localizes with the CatSper complex at the flagellum membrane (PubMed:28226241).

CATSPERTZ Antibody (C-term) - Protocols

Provided below are standard protocols that you may find useful for product applications.

- [Western Blot](#)
- [Blocking Peptides](#)
- [Dot Blot](#)
- [Immunohistochemistry](#)
- [Immunofluorescence](#)
- [Immunoprecipitation](#)
- [Flow Cytometry](#)
- [Cell Culture](#)

CATSPERTZ Antibody (C-term) - Images



C11orf20 Antibody (C-term) (Cat. #AP14718b) western blot analysis in WiDr cell line lysates (35ug/lane). This demonstrates the C11orf20 antibody detected the C11orf20 protein (arrow).

CATSPERTZ Antibody (C-term) - Background

C11orf20 may be involved in late spermatogenesis (By similarity).

CATSPERTZ Antibody (C-term) - References

Simpson, J.C., et al. EMBO Rep. 1(3):287-292(2000)