

CDH7 Antibody (N-term)
Affinity Purified Rabbit Polyclonal Antibody (Pab)
Catalog # AP1471a**Specification**

CDH7 Antibody (N-term) - Product Information

Application	FC, IHC-P, WB,E
Primary Accession	Q9ULB5
Other Accession	Q8BM92 , Q90763
Reactivity	Human
Predicted	Chicken, Mouse
Host	Rabbit
Clonality	Polyclonal
Isotype	Rabbit IgG
Antigen Region	56-84

CDH7 Antibody (N-term) - Additional Information**Gene ID** 1005**Other Names**

Cadherin-7, CDH7, CDH7L1

Target/Specificity

This CDH7 antibody is generated from rabbits immunized with a KLH conjugated synthetic peptide between 56-84 amino acids from the N-terminal region of human CDH7.

Dilution

FC~~1:10~50

IHC-P~~1:10~50

WB~~1:1000

E~~Use at an assay dependent concentration.

Format

Purified polyclonal antibody supplied in PBS with 0.09% (W/V) sodium azide. This antibody is purified through a protein A column, followed by peptide affinity purification.

Storage

Maintain refrigerated at 2-8°C for up to 2 weeks. For long term storage store at -20°C in small aliquots to prevent freeze-thaw cycles.

Precautions

CDH7 Antibody (N-term) is for research use only and not for use in diagnostic or therapeutic procedures.

CDH7 Antibody (N-term) - Protein Information**Name** CDH7

Synonyms CDH7L1

Function Cadherins are calcium-dependent cell adhesion proteins. They preferentially interact with themselves in a homophilic manner in connecting cells; cadherins may thus contribute to the sorting of heterogeneous cell types.

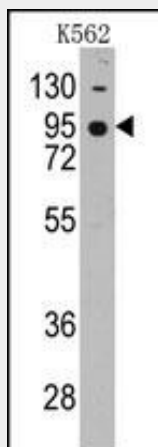
Cellular Location

Cell membrane; Single-pass type I membrane protein

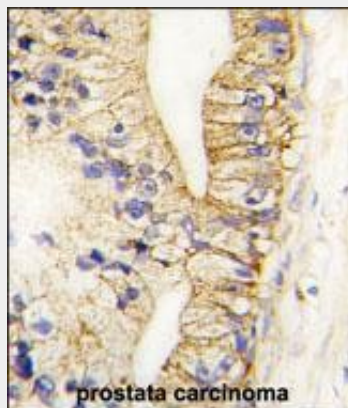
CDH7 Antibody (N-term) - Protocols

Provided below are standard protocols that you may find useful for product applications.

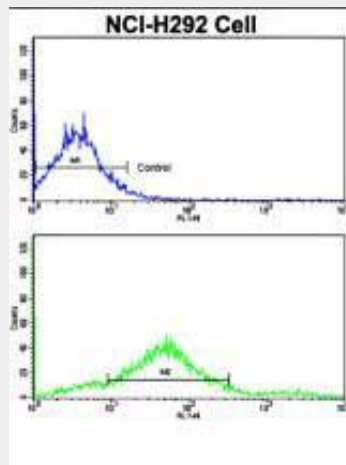
- [Western Blot](#)
- [Blocking Peptides](#)
- [Dot Blot](#)
- [Immunohistochemistry](#)
- [Immunofluorescence](#)
- [Immunoprecipitation](#)
- [Flow Cytometry](#)
- [Cell Culture](#)

CDH7 Antibody (N-term) - Images

Western blot analysis of anti-CDH7 Pab (Cat.#AP1471a) in K562 cell line lysates (35ug/lane). CDH7(arrow) was detected using the purified Pab.



Formalin-fixed and paraffin-embedded human prostata carcinoma tissue reacted with CDH7 antibody (N-term) (Cat.#AP1471a), which was peroxidase-conjugated to the secondary antibody, followed by DAB staining. This data demonstrates the use of this antibody for immunohistochemistry; clinical relevance has not been evaluated.



Flow cytometric analysis of NCI-H292 cells using Cadherin 7 (CDH7) Antibody (N-term)(bottom histogram) compared to a negative control cell (top histogram). FITC-conjugated goat-anti-rabbit secondary antibodies were used for the analysis.

CDH7 Antibody (N-term) - Background

CDH7 is a type II classical cadherin from the cadherin superfamily. This protein is a calcium dependent cell-cell adhesion glycoprotein comprised of five extracellular cadherin repeats, a transmembrane region and a highly conserved cytoplasmic tail. Type II (atypical) cadherins are defined based on their lack of a HAV cell adhesion recognition sequence specific to type I cadherins. Cadherins mediate cell-cell binding in a homophilic manner, contributing to the sorting of heterogeneous cell types and the maintenance of orderly structures.

CDH7 Antibody (N-term) - References

- Moore,R., Oncogene 23 (40), 6726-6735 (2004)
- Kools,P., Genomics 68 (3), 283-295 (2000)
- Shimoyama,Y., Biochem. J. 349 (PT 1), 159-167 (2000)
- Kremmidiotis,G., Genomics 49 (3), 467-471 (1998)