

LSM14A Antibody (C-term)
Affinity Purified Rabbit Polyclonal Antibody (Pab)
Catalog # AP14733b

Specification

LSM14A Antibody (C-term) - Product Information

Application	WB, IHC-P,E
Primary Accession	Q8ND56
Other Accession	Q8K2F8 , Q3MHF8 , NP_001107565.1 , NP_056393.2
Reactivity	Human
Predicted	Bovine, Mouse
Host	Rabbit
Clonality	Polyclonal
Isotype	Rabbit IgG
Calculated MW	50530
Antigen Region	311-340

LSM14A Antibody (C-term) - Additional Information

Gene ID 26065

Other Names

Protein LSM14 homolog A, Protein FAM61A, Protein SCD6 homolog, Putative alpha-synuclein-binding protein, AlphaSNBP, RNA-associated protein 55A, hRAP55, hRAP55A, LSM14A, C19orf13, FAM61A, RAP55, RAP55A

Target/Specificity

This LSM14A antibody is generated from rabbits immunized with a KLH conjugated synthetic peptide between 311-340 amino acids from the C-terminal region of human LSM14A.

Dilution

WB~~1:1000
IHC-P~~1:10~50

Format

Purified polyclonal antibody supplied in PBS with 0.09% (W/V) sodium azide. This antibody is purified through a protein A column, followed by peptide affinity purification.

Storage

Maintain refrigerated at 2-8°C for up to 2 weeks. For long term storage store at -20°C in small aliquots to prevent freeze-thaw cycles.

Precautions

LSM14A Antibody (C-term) is for research use only and not for use in diagnostic or therapeutic procedures.

LSM14A Antibody (C-term) - Protein Information

Name LSM14A {ECO:0000303|PubMed:26339800, ECO:0000312|HGNC:HGNC:24489}

Function Essential for formation of P-bodies, cytoplasmic structures that provide storage sites for translationally inactive mRNAs and protect them from degradation (PubMed:[16484376](#), PubMed:[17074753](#), PubMed:[29510985](#)). Acts as a repressor of mRNA translation (PubMed:[29510985](#)). May play a role in mitotic spindle assembly (PubMed:[26339800](#)).

Cellular Location

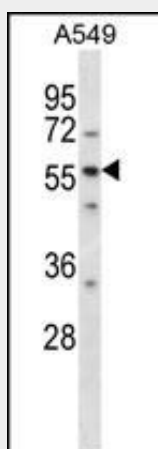
Cytoplasm, P-body. Cytoplasm, cytoskeleton, spindle. Cytoplasm, Stress granule

LSM14A Antibody (C-term) - Protocols

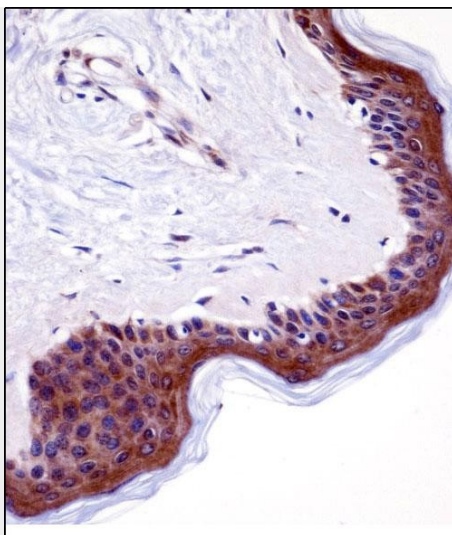
Provided below are standard protocols that you may find useful for product applications.

- [Western Blot](#)
- [Blocking Peptides](#)
- [Dot Blot](#)
- [Immunohistochemistry](#)
- [Immunofluorescence](#)
- [Immunoprecipitation](#)
- [Flow Cytometry](#)
- [Cell Culture](#)

LSM14A Antibody (C-term) - Images



LSM14A Antibody (C-term) (Cat. #AP14733b) western blot analysis in A549 cell line lysates (35ug/lane). This demonstrates the LSM14A antibody detected the LSM14A protein (arrow).



LSM14A Antibody (C-term) (AP14733b) immunohistochemistry analysis in formalin fixed and paraffin embedded human skin tissue followed by peroxidase conjugation of the secondary antibody and DAB staining. This data demonstrates the use of LSM14A Antibody (C-term) for immunohistochemistry. Clinical relevance has not been evaluated.

LSM14A Antibody (C-term) - Background

Sm-like proteins were identified in a variety of organisms based on sequence homology with the Sm protein family (see SNRPD2; 601061). Sm-like proteins contain the Sm sequence motif, which consists of 2 regions separated by a linker of variable length that folds as a loop. The Sm-like proteins are thought to form a stable heteromer present in tri-snRNP particles, which are important for pre-mRNA splicing.

LSM14A Antibody (C-term) - References

Marnef, A., et al. Int. J. Biochem. Cell Biol. 41(5):977-981(2009)
Tanaka, K.J., et al. J. Biol. Chem. 281(52):40096-40106(2006)
Olsen, J.V., et al. Cell 127(3):635-648(2006)
Yang, W.H., et al. RNA 12(4):547-554(2006)