

P2RY2 Antibody (C-term)
Affinity Purified Rabbit Polyclonal Antibody (Pab)
Catalog # AP14740b

Specification

P2RY2 Antibody (C-term) - Product Information

Application	WB,E
Primary Accession	P41231
Other Accession	NP_002555.2 , NP_788086.1 , NP_788085.1
Reactivity	Human
Host	Rabbit
Clonality	Polyclonal
Isotype	Rabbit IgG
Calculated MW	42273
Antigen Region	324-352

P2RY2 Antibody (C-term) - Additional Information

Gene ID 5029

Other Names

P2Y purinoceptor 2, P2Y2, ATP receptor, P2U purinoceptor 1, P2U1, P2U receptor 1, Purinergic receptor, P2RY2, P2RU1

Target/Specificity

This P2RY2 antibody is generated from rabbits immunized with a KLH conjugated synthetic peptide between 324-352 amino acids from the C-terminal region of human P2RY2.

Dilution

WB~~1:1000

E~~Use at an assay dependent concentration.

Format

Purified polyclonal antibody supplied in PBS with 0.09% (W/V) sodium azide. This antibody is purified through a protein A column, followed by peptide affinity purification.

Storage

Maintain refrigerated at 2-8°C for up to 2 weeks. For long term storage store at -20°C in small aliquots to prevent freeze-thaw cycles.

Precautions

P2RY2 Antibody (C-term) is for research use only and not for use in diagnostic or therapeutic procedures.

P2RY2 Antibody (C-term) - Protein Information

Name P2RY2

Synonyms P2RU1

Function Receptor for ATP and UTP coupled to G-proteins that activate a phosphatidylinositol-calcium second messenger system. The affinity range is UTP = ATP > ATP-gamma-S >> 2-methylthio-ATP = ADP.

Cellular Location

Cell membrane; Multi-pass membrane protein.

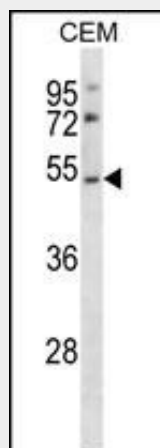
Tissue Location

Spleen, testis, kidney, liver, lung, heart and brain

P2RY2 Antibody (C-term) - Protocols

Provided below are standard protocols that you may find useful for product applications.

- [Western Blot](#)
- [Blocking Peptides](#)
- [Dot Blot](#)
- [Immunohistochemistry](#)
- [Immunofluorescence](#)
- [Immunoprecipitation](#)
- [Flow Cytometry](#)
- [Cell Culture](#)

P2RY2 Antibody (C-term) - Images

P2RY2 Antibody (C-term) (Cat. #AP14740b) western blot analysis in CEM cell line lysates (35ug/lane). This demonstrates the P2RY2 antibody detected the P2RY2 protein (arrow).

P2RY2 Antibody (C-term) - Background

The product of this gene belongs to the family of G-protein coupled receptors. This family has several receptor subtypes with different pharmacological selectivity, which overlaps in some cases, for various adenosine and uridine nucleotides. This receptor is responsive to both adenosine and uridine nucleotides. It may participate in control of the cell cycle of endometrial carcinoma cells. Three transcript variants encoding the same protein have been identified for this gene.

P2RY2 Antibody (C-term) - References

Bailey, S.D., et al. Diabetes Care 33(10):2250-2253(2010)
Boucher, I., et al. Am. J. Physiol., Cell Physiol. 299 (2), C411-C421 (2010) :
Ratchford, A.M., et al. J. Biol. Chem. 285(10):7545-7555(2010)
Taboubi, S., et al. Mol. Biol. Cell 21(6):946-955(2010)
Vazquez-Cuevas, F.G., et al. Reprod. Biol. Endocrinol. 8, 88 (2010) :