

**TMPO Antibody (N-term)**  
**Affinity Purified Rabbit Polyclonal Antibody (Pab)**  
**Catalog # AP14741a****Specification**

---

**TMPO Antibody (N-term) - Product Information**

Application	IHC-P, WB,E
Primary Accession	<a href="#">P42166</a>
Other Accession	<a href="#">NP_003267.1</a>
Reactivity	Human
Host	Rabbit
Clonality	Polyclonal
Isotype	Rabbit IgG
Calculated MW	75492
Antigen Region	166-195

**TMPO Antibody (N-term) - Additional Information****Gene ID** 7112**Other Names**

Lamina-associated polypeptide 2, isoform alpha, Thymopoietin isoform alpha, TP alpha, Thymopoietin-related peptide isoform alpha, TPRP isoform alpha, Thymopoietin, TP, Splenin, Thymopentin, TP5, TMPO, LAP2

**Target/Specificity**

This TMPO antibody is generated from rabbits immunized with a KLH conjugated synthetic peptide between 166-195 amino acids from the N-terminal region of human TMPO.

**Dilution**

IHC-P~~1:10~50

WB~~1:1000

E~~Use at an assay dependent concentration.

**Format**

Purified polyclonal antibody supplied in PBS with 0.09% (W/V) sodium azide. This antibody is purified through a protein A column, followed by peptide affinity purification.

**Storage**

Maintain refrigerated at 2-8°C for up to 2 weeks. For long term storage store at -20°C in small aliquots to prevent freeze-thaw cycles.

**Precautions**

TMPO Antibody (N-term) is for research use only and not for use in diagnostic or therapeutic procedures.

**TMPO Antibody (N-term) - Protein Information**

**Name** TMPO

**Synonyms** LAP2

**Function** May be involved in the structural organization of the nucleus and in the post-mitotic nuclear assembly. Plays an important role, together with LMNA, in the nuclear anchorage of RB1.

**Cellular Location**

Nucleus. Chromosome. Note=Expressed diffusely throughout the nucleus

**Tissue Location**

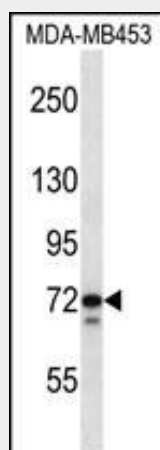
Expressed in many tissues. Most abundant in adult thymus and fetal liver

**TMPO Antibody (N-term) - Protocols**

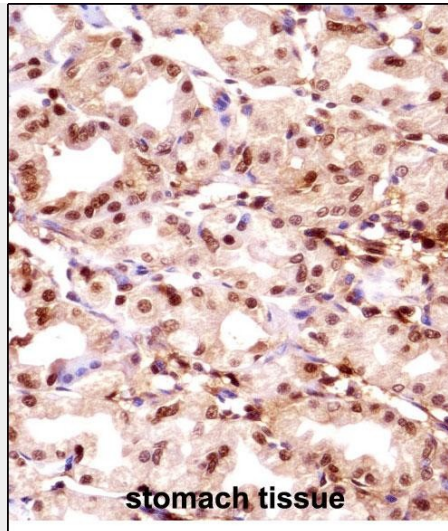
Provided below are standard protocols that you may find useful for product applications.

- [Western Blot](#)
- [Blocking Peptides](#)
- [Dot Blot](#)
- [Immunohistochemistry](#)
- [Immunofluorescence](#)
- [Immunoprecipitation](#)
- [Flow Cytometry](#)
- [Cell Culture](#)

**TMPO Antibody (N-term) - Images**



TMPO Antibody (N-term) (Cat. #AP14741a) western blot analysis in MDA-MB453 cell line lysates (35ug/lane). This demonstrates the TMPO antibody detected the TMPO protein (arrow).



TMPO Antibody (N-term) (AP14741a) immunohistochemistry analysis in formalin fixed and paraffin embedded human stomach tissue followed by peroxidase conjugation of the secondary antibody and DAB staining. This data demonstrates the use of TMPO Antibody (N-term) for immunohistochemistry. Clinical relevance has not been evaluated.

#### **TMPO Antibody (N-term) - Background**

The protein encoded by this gene resides in the nucleus and may play a role in the assembly of the nuclear lamina, and thus help maintain the structural organization of the nuclear envelope. It may function as a receptor for the attachment of lamin filaments to the inner nuclear membrane. Mutations in this gene are associated with dilated cardiomyopathy. Alternatively spliced transcript variants encoding different isoforms have been noted for this gene.

#### **TMPO Antibody (N-term) - References**

Bailey, S.D., et al. Diabetes Care 33(10):2250-2253(2010)  
Davila, S., et al. Genes Immun. 11(3):232-238(2010)  
Craig, D.W., et al. Diabet. Med. 26(11):1090-1098(2009)  
Talmud, P.J., et al. Am. J. Hum. Genet. 85(5):628-642(2009)  
Shaklai, S., et al. Eur. J. Cell Biol. 87(5):267-278(2008)