

GRAP2 Antibody (Center)
Affinity Purified Rabbit Polyclonal Antibody (Pab)
Catalog # AP14745c

Specification

GRAP2 Antibody (Center) - Product Information

Application	WB,E
Primary Accession	O75791
Other Accession	NP_004801.1
Reactivity	Human
Host	Rabbit
Clonality	Polyclonal
Isotype	Rabbit IgG
Calculated MW	37909
Antigen Region	131-159

GRAP2 Antibody (Center) - Additional Information

Gene ID 9402

Other Names

GRB2-related adapter protein 2, Adapter protein GRID, GRB-2-like protein, GRB2L, GRBLG, GRBX, Grf40 adapter protein, Grf-40, Growth factor receptor-binding protein, Hematopoietic cell-associated adapter protein GrpL, P38, Protein GADS, SH3-SH2-SH3 adapter Mona, GRAP2, GADS, GRB2L, GRID

Target/Specificity

This GRAP2 antibody is generated from rabbits immunized with a KLH conjugated synthetic peptide between 131-159 amino acids from the Central region of human GRAP2.

Dilution

WB~~1:1000

E~~Use at an assay dependent concentration.

Format

Purified polyclonal antibody supplied in PBS with 0.09% (W/V) sodium azide. This antibody is purified through a protein A column, followed by peptide affinity purification.

Storage

Maintain refrigerated at 2-8°C for up to 2 weeks. For long term storage store at -20°C in small aliquots to prevent freeze-thaw cycles.

Precautions

GRAP2 Antibody (Center) is for research use only and not for use in diagnostic or therapeutic procedures.

GRAP2 Antibody (Center) - Protein Information

Name GRAP2

Synonyms GADS, GRB2L, GRID

Function Interacts with SLP-76 to regulate NF-AT activation. Binds to tyrosine-phosphorylated shc.

Cellular Location

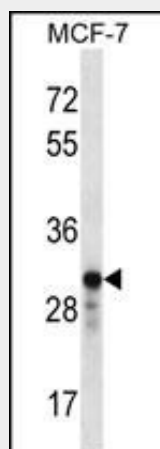
Nucleus. Cytoplasm. Endosome

GRAP2 Antibody (Center) - Protocols

Provided below are standard protocols that you may find useful for product applications.

- [Western Blot](#)
- [Blocking Peptides](#)
- [Dot Blot](#)
- [Immunohistochemistry](#)
- [Immunofluorescence](#)
- [Immunoprecipitation](#)
- [Flow Cytometry](#)
- [Cell Culture](#)

GRAP2 Antibody (Center) - Images



GRAP2 Antibody (Center) (Cat. #AP14745c) western blot analysis in MCF-7 cell line lysates (35ug/lane). This demonstrates the GRAP2 antibody detected the GRAP2 protein (arrow).

GRAP2 Antibody (Center) - Background

This gene encodes a member of the GRB2/Sem5/Drk family. This member is an adaptor-like protein involved in leukocyte-specific protein-tyrosine kinase signaling. Like its related family member, GRB2-related adaptor protein (GRAP), this protein contains an SH2 domain flanked by two SH3 domains. This protein interacts with other proteins, such as GRB2-associated binding protein 1 (GAB1) and the SLP-76 leukocyte protein (LCP2), through its SH3 domains. Transcript variants utilizing alternative polyA sites exist.

GRAP2 Antibody (Center) - References

Rose, J.E., et al. Mol. Med. 16 (7-8), 247-253 (2010) :
Preisinger, C., et al. Cell. Signal. 22(5):848-856(2010)
Davila, S., et al. Genes Immun. 11(3):232-238(2010)
Segat, L., et al. J. Gastroenterol. Hepatol. 24(12):1840-1846(2009)
Ludwig, L., et al. Cancer Lett. 275(2):194-197(2009)