

SNRPA Antibody (Center)
Affinity Purified Rabbit Polyclonal Antibody (Pab)
Catalog # AP14764c**Specification**

SNRPA Antibody (Center) - Product Information

Application	IHC-P, WB,E
Primary Accession	P09012
Other Accession	Q06AA4 , Q2KIR1 , NP_004587.1
Reactivity	Human
Predicted	Bovine, Pig
Host	Rabbit
Clonality	Polyclonal
Isotype	Rabbit IgG
Calculated MW	31280
Antigen Region	83-111

SNRPA Antibody (Center) - Additional Information**Gene ID** 6626**Other Names**

U1 small nuclear ribonucleoprotein A, U1 snRNP A, U1-A, U1A, SNRPA

Target/Specificity

This SNRPA antibody is generated from rabbits immunized with a KLH conjugated synthetic peptide between 83-111 amino acids from the Central region of human SNRPA.

Dilution

IHC-P~~1:10~50

WB~~1:1000

E~~Use at an assay dependent concentration.

Format

Purified polyclonal antibody supplied in PBS with 0.09% (W/V) sodium azide. This antibody is purified through a protein A column, followed by peptide affinity purification.

Storage

Maintain refrigerated at 2-8°C for up to 2 weeks. For long term storage store at -20°C in small aliquots to prevent freeze-thaw cycles.

Precautions

SNRPA Antibody (Center) is for research use only and not for use in diagnostic or therapeutic procedures.

SNRPA Antibody (Center) - Protein Information**Name** SNRPA

Function Component of the spliceosomal U1 snRNP, which is essential for recognition of the pre-mRNA 5' splice-site and the subsequent assembly of the spliceosome. U1 snRNP is the first snRNP to interact with pre-mRNA. This interaction is required for the subsequent binding of U2 snRNP and the U4/U6/U5 tri-snRNP. SNRPA binds stem loop II of U1 snRNA. In a snRNP-free form (SF-A) may be involved in coupled pre-mRNA splicing and polyadenylation process. May bind preferentially to the 5'-UGCAC-3' motif on RNAs.

Cellular Location

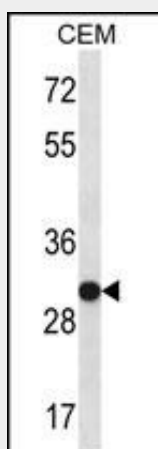
Nucleus.

SNRPA Antibody (Center) - Protocols

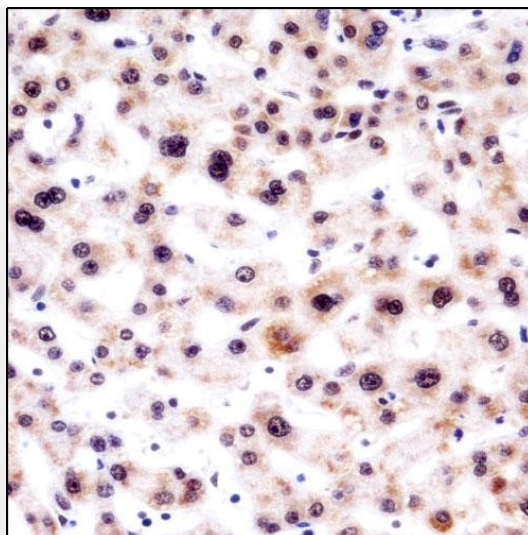
Provided below are standard protocols that you may find useful for product applications.

- [Western Blot](#)
- [Blocking Peptides](#)
- [Dot Blot](#)
- [Immunohistochemistry](#)
- [Immunofluorescence](#)
- [Immunoprecipitation](#)
- [Flow Cytometry](#)
- [Cell Culture](#)

SNRPA Antibody (Center) - Images



SNRPA Antibody (Center) (Cat. #AP14764c) western blot analysis in CEM cell line lysates (35ug/lane). This demonstrates the SNRPA antibody detected the SNRPA protein (arrow).



SNRPA Antibody (Center) (AP14764c) immunohistochemistry analysis in formalin fixed and paraffin embedded human liver tissue followed by peroxidase conjugation of the secondary antibody and DAB staining. This data demonstrates the use of SNRPA Antibody (Center) for immunohistochemistry. Clinical relevance has not been evaluated.

SNRPA Antibody (Center) - Background

The protein encoded by this gene associates with stem loop II of the U1 small nuclear ribonucleoprotein, which binds the 5' splice site of precursor mRNAs and is required for splicing. The encoded protein autoregulates itself by polyadenylation inhibition of its own pre-mRNA via dimerization and has been implicated in the coupling of splicing and polyadenylation.

SNRPA Antibody (Center) - References

Guan, F., et al. RNA 13(12):2129-2140(2007)
Hall-Pogar, T., et al. RNA 13(7):1103-1115(2007)
Shajani, Z., et al. J. Mol. Biol. 349(4):699-715(2005)
Andersen, J.S., et al. Nature 433(7021):77-83(2005)
Jessen, T.H., et al. EMBO J. 10(11):3447-3456(1991)