

**COBRA1 Antibody (Center)**  
**Affinity Purified Rabbit Polyclonal Antibody (Pab)**  
**Catalog # AP14765c****Specification**

---

**COBRA1 Antibody (Center) - Product Information**

|                   |                                                      |
|-------------------|------------------------------------------------------|
| Application       | WB,E                                                 |
| Primary Accession | <a href="#">Q8WX92</a>                               |
| Other Accession   | <a href="#">Q8C4Y3</a> , <a href="#">NP_056271.2</a> |
| Reactivity        | Human                                                |
| Predicted         | Mouse                                                |
| Host              | Rabbit                                               |
| Clonality         | Polyclonal                                           |
| Isotype           | Rabbit IgG                                           |
| Calculated MW     | 65697                                                |
| Antigen Region    | 256-285                                              |

**COBRA1 Antibody (Center) - Additional Information****Gene ID** 25920**Other Names**

Negative elongation factor B, NELF-B, Cofactor of BRCA1, NELFB, COBRA1, KIAA1182

**Target/Specificity**

This COBRA1 antibody is generated from rabbits immunized with a KLH conjugated synthetic peptide between 256-285 amino acids from the Central region of human COBRA1.

**Dilution**

WB~~1:1000

E~~Use at an assay dependent concentration.

**Format**

Purified polyclonal antibody supplied in PBS with 0.09% (W/V) sodium azide. This antibody is purified through a protein A column, followed by peptide affinity purification.

**Storage**

Maintain refrigerated at 2-8°C for up to 2 weeks. For long term storage store at -20°C in small aliquots to prevent freeze-thaw cycles.

**Precautions**

COBRA1 Antibody (Center) is for research use only and not for use in diagnostic or therapeutic procedures.

**COBRA1 Antibody (Center) - Protein Information****Name** NELFB

**Synonyms** COBRA1 {ECO:0000303|PubMed:11739404}, KI

**Function** Essential component of the NELF complex, a complex that negatively regulates the elongation of transcription by RNA polymerase II (PubMed:[12612062](#)). The NELF complex, which acts via an association with the DSIF complex and causes transcriptional pausing, is counteracted by the P-TEFb kinase complex (PubMed:[10199401](#)). May be able to induce chromatin unfolding (PubMed:[11739404](#)). Essential for early embryogenesis; plays an important role in maintaining the undifferentiated state of embryonic stem cells (ESCs) by preventing unscheduled expression of developmental genes (By similarity). Plays a key role in establishing the responsiveness of stem cells to developmental cues; facilitates plasticity and cell fate commitment in ESCs by establishing the appropriate expression level of signaling molecules (By similarity). Supports the transcription of genes involved in energy metabolism in cardiomyocytes; facilitates the association of transcription initiation factors with the promoters of the metabolism- related genes (By similarity).

#### **Cellular Location**

Nucleus.

#### **Tissue Location**

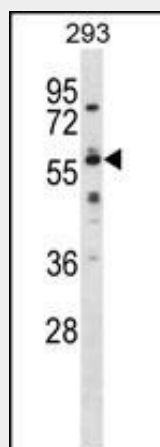
Widely expressed. Expressed in heart, brain, lung, placenta, liver, skeletal muscle, kidney and pancreas

### **COBRA1 Antibody (Center) - Protocols**

Provided below are standard protocols that you may find useful for product applications.

- [Western Blot](#)
- [Blocking Peptides](#)
- [Dot Blot](#)
- [Immunohistochemistry](#)
- [Immunofluorescence](#)
- [Immunoprecipitation](#)
- [Flow Cytometry](#)
- [Cell Culture](#)

### **COBRA1 Antibody (Center) - Images**



COBRA1 Antibody (Center) (Cat. #AP14765c) western blot analysis in 293 cell line lysates (35ug/lane). This demonstrates the COBRA1 antibody detected the COBRA1 protein (arrow).

### **COBRA1 Antibody (Center) - Background**

NELFB is a subunit of negative elongation factor (NELF), which also includes NELFA (WHSC2; MIM 606026), either NELFC or NELFD (TH1L; MIM 605297), and NELFE (RDBP; MIM 154040). NELF acts with DRB sensitivity-inducing factor (DSIF), a heterodimer of SPT4 (SUPT4H1; MIM 603555) and SPT5 (SUPT5H; MIM 602102), to cause transcriptional pausing of RNA polymerase II (see MIM 180660) (Narita et al., 2003 [PubMed 12612062]).

#### **COBRA1 Antibody (Center) - References**

Sun, J., et al. J. Cell. Biochem. 103(6):1798-1807(2008)  
Sun, J., et al. J. Steroid Biochem. Mol. Biol. 107 (3-5), 131-139 (2007) :  
Wu, C., et al. Proteomics 7(11):1775-1785(2007)  
Narita, T., et al. Mol. Cell 26(3):349-365(2007)  
Aiyar, S.E., et al. Int. J. Biol. Sci. 3(7):486-492(2007)