

**TGF Beta 2 Antibody (C-term)**  
**Purified Rabbit Polyclonal Antibody (Pab)**  
**Catalog # AP1476b****Specification**

---

**TGF Beta 2 Antibody (C-term) - Product Information**

Application	WB, IHC-P,E
Primary Accession	<a href="#">P61812</a>
Reactivity	Human
Host	Rabbit
Clonality	Polyclonal
Isotype	Rabbit IgG
Calculated MW	47748
Antigen Region	277-306

**TGF Beta 2 Antibody (C-term) - Additional Information****Gene ID** 7042**Other Names**

Transforming growth factor beta-2, TGF-beta-2, BSC-1 cell growth inhibitor, Cetermin, Glioblastoma-derived T-cell suppressor factor, G-TSF, Polyergin, Latency-associated peptide, LAP, TGFB2

**Target/Specificity**

This TGF Beta 2 antibody is generated from rabbits immunized with a KLH conjugated synthetic peptide between 277-306 amino acids from the C-terminal region of human TGF Beta 2.

**Dilution**

WB~~1:1000

IHC-P~~1:50

E~~Use at an assay dependent concentration.

**Format**

Purified polyclonal antibody supplied in PBS with 0.09% (W/V) sodium azide. This antibody is prepared by Saturated Ammonium Sulfate (SAS) precipitation followed by dialysis against PBS.

**Storage**

Maintain refrigerated at 2-8°C for up to 2 weeks. For long term storage store at -20°C in small aliquots to prevent freeze-thaw cycles.

**Precautions**

TGF Beta 2 Antibody (C-term) is for research use only and not for use in diagnostic or therapeutic procedures.

**TGF Beta 2 Antibody (C-term) - Protein Information****Name** TGFB2

**Function** [Transforming growth factor beta-2 proprotein]: Precursor of the Latency-associated peptide (LAP) and Transforming growth factor beta-2 (TGF-beta-2) chains, which constitute the regulatory and active subunit of TGF-beta-2, respectively.

**Cellular Location**

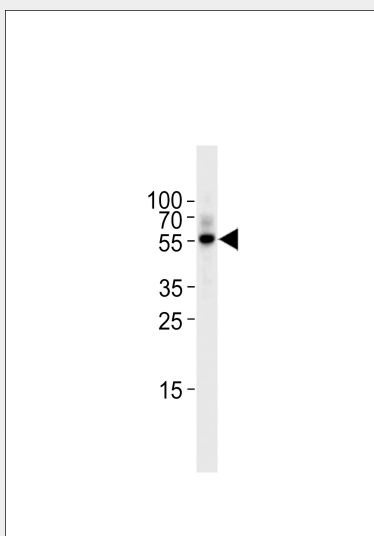
[Latency-associated peptide]: Secreted, extracellular space, extracellular matrix  
{ECO:0000250|UniProtKB:P01137}

**TGF Beta 2 Antibody (C-term) - Protocols**

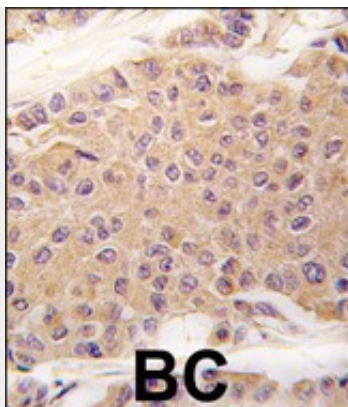
Provided below are standard protocols that you may find useful for product applications.

- [Western Blot](#)
- [Blocking Peptides](#)
- [Dot Blot](#)
- [Immunohistochemistry](#)
- [Immunofluorescence](#)
- [Immunoprecipitation](#)
- [Flow Cytometry](#)
- [Cell Culture](#)

**TGF Beta 2 Antibody (C-term) - Images**



TGFB2 Antibody (C-term) (Cat.# AP1476b) western blot analysis in Raji cell line lysates (35ug/lane). This demonstrates the TGFB2 antibody detected the TGFB2 protein (arrow).



Formalin-fixed and paraffin-embedded human breast carcinoma tissue reacted with TGFβ2 antibody (C-term)(Cat.#AP1476b), which was peroxidase-conjugated to the secondary antibody, followed by DAB staining. This data demonstrates the use of this antibody for immunohistochemistry; clinical relevance has not been evaluated.

#### **TGF Beta 2 Antibody (C-term) - Background**

Transforming growth factor-beta 2 (TGF-β2) is a cytokine that performs many cellular functions and has a vital role during embryonic development. It is an extracellular glycosylated protein. It is known to suppress the effects of interleukin dependent T-cell tumors. There are two named isoforms of this protein, created by alternative splicing of the same gene.

#### **TGF Beta 2 Antibody (C-term) - References**

Hatsushika,K., Clin. Exp. Allergy 37 (8), 1165-1174 (2007) Jimi,S., Int. J. Oncol. 31 (2), 397-404 (2007) Ito,T., Biochem. Biophys. Res. Commun. 359 (1), 108-114 (2007) Yao,K., Mol. Vis. 13, 1769-1776 (2007)