

**Mouse Camkv Antibody (N-term)**  
**Affinity Purified Rabbit Polyclonal Antibody (Pab)**  
**Catalog # AP14781a**

## Specification

---

### Mouse Camkv Antibody (N-term) - Product Information

Application	WB,E
Primary Accession	<a href="#">Q3UHL1</a>
Other Accession	<a href="#">Q63092</a> , <a href="#">Q8NCB2</a> , <a href="#">NP_663596.1</a>
Reactivity	Human, Mouse
Predicted	Rat
Host	Rabbit
Clonality	Polyclonal
Isotype	Rabbit IgG
Calculated MW	54819
Antigen Region	46-73

### Mouse Camkv Antibody (N-term) - Additional Information

**Gene ID** 235604

#### Other Names

CaM kinase-like vesicle-associated protein, Camkv

#### Target/Specificity

This Mouse Camkv antibody is generated from rabbits immunized with a KLH conjugated synthetic peptide between 46-73 amino acids from the N-terminal region of mouse Camkv.

#### Dilution

WB~~1:1000

#### Format

Purified polyclonal antibody supplied in PBS with 0.09% (W/V) sodium azide. This antibody is purified through a protein A column, followed by peptide affinity purification.

#### Storage

Maintain refrigerated at 2-8°C for up to 2 weeks. For long term storage store at -20°C in small aliquots to prevent freeze-thaw cycles.

#### Precautions

Mouse Camkv Antibody (N-term) is for research use only and not for use in diagnostic or therapeutic procedures.

### Mouse Camkv Antibody (N-term) - Protein Information

**Name** Camkv

**Function** Does not appear to have detectable kinase activity.

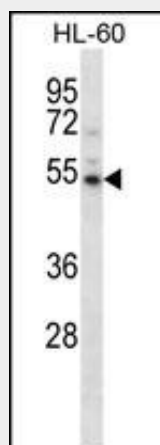
**Cellular Location**

Cell membrane; Peripheral membrane protein. Cytoplasmic vesicle membrane; Peripheral membrane protein. Note=Predominantly observed in association with the plasma membrane of soma and in neurites, both axons and dendrites. May be associated with vesicular structures (By similarity).

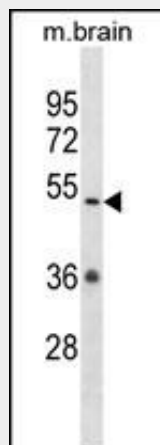
**Mouse Camkv Antibody (N-term) - Protocols**

Provided below are standard protocols that you may find useful for product applications.

- [Western Blot](#)
- [Blocking Peptides](#)
- [Dot Blot](#)
- [Immunohistochemistry](#)
- [Immunofluorescence](#)
- [Immunoprecipitation](#)
- [Flow Cytometry](#)
- [Cell Culture](#)

**Mouse Camkv Antibody (N-term) - Images**

Mouse Camkv Antibody (N-term) (Cat. #AP14781a) western blot analysis in HL-60 cell line lysates (35ug/lane). This demonstrates the Camkv antibody detected the Camkv protein (arrow).



Mouse Camkv Antibody (N-term) (Cat. #AP14781a) western blot analysis in mouse brain tissue

lysates (35ug/lane). This demonstrates the Camkv antibody detected the Camkv protein (arrow).

#### **Mouse Camkv Antibody (N-term) - Background**

Does not appear to have detectable kinase activity.

#### **Mouse Camkv Antibody (N-term) - References**

Ballif, B.A., et al. Mol. Cell Proteomics 3(11):1093-1101(2004)

Thuret, S., et al. Mol. Cell. Neurosci. 25(3):394-405(2004)